



FEDERAL ROAD SAFETY CORPS
NATIONAL HEADQUARTERS,
ABUJA

FRSC STATISTICAL DIGEST

2nd Quarter 2021



Publisher

Dr. Boboye Oyeyemi, MFR, mni, NPoM

Editorial Board

Editor-in-Chief

DCM Victor C Nwokolo, fdc

Editor

CC BM Tunau (CC Statistics)

Asst. Editor/Graphics

RC M Umar (PRS)

Secretary

RC SO Egbujiobi (CS)

Members

DCC A Oki (MVA)
SRC SO Olasupo (AHR)
SRC O Olivia (CLA)
RC OB Adeyemi (CMRS)
RC IA Alkali (F&A)
RC S Ogiri (CPEO)
RC IO Hassan(SERVICOM)
RC MB Zaki(TRG)
RC C Agbo(COSEN)
RC E Ogbole (CTSO)
RC U Nwanro (OPS)
DRC IO Adesegun (CP)
DRC I Obade (PRS)

The Nigeria Road Safety Strategy (NRSS) 2021

The National Road Safety Strategy 2021–2030 represents the commitment of federal, state and territory governments to an agreed set of national goals, objectives and action priorities; setting out a path for action to reduce fatal and serious injury crashes on Nigerian Roads. It is evidence based that there was the need to chart a policy framework that would place Nigeria in the league of nations with the safest roads in the world and inline with global best practice. Previously, different agencies and organizations in Nigeria executed road safety programs and activities without specific and documented policies, thereby relying on ‘rule of thumb’ and instincts of leaders or individuals. As a result, there was observed job duplication and overlap of functions, which – to a large extent – did not significantly advance the road safety course of the country. Policies and strategies based on the safe systems approach have been introduced to mainstream and integrate various elements of road safety efforts into actualizing a safe motoring environment in Nigeria. The goal of the safe systems approach is to ensure that even when crashes occur, they do not result in serious injury or death. It is an inclusive approach that caters for all groups using the road system, including drivers, motorcyclists, passengers, pedestrians, cyclists, and commercial/heavy vehicle drivers. Many nations of the world including Nigeria have developed their respective National Road Safety Strategy. It is proven that countries with Road Safety Strategy have better road safety records than those without a strategy.

DCM Victor C. Nwokolo, fdc
Deputy Corps Marshal
DCM Policy, Research and Statistics



TABLE OF CONTENTS

SN	Departments	Abbreviation	Page
1	Operations	OPS	5
2	Administration And Human Resources	AHR	8
3	Finance And Accounts	F&A	10
4	Motor Vehicle Administration	MVA	13
5	Corps Legal Office	CLO	15
6	Corps Medical And Rescue Services	CMRS	16
7	Corps Public Education Office	CPEO	20
8	Corps Transport Standardization Office	CTSO	22
9	Corps Secretary	CS	25
10	Corps Provost	CP	26
11	SERVICOM		27
12	Policy Research and Statistics	PRS	28
13	Special Duties and External Relations	SDER	36
14	Training	TRG	39
15	Technical Services Department	TSD	42
16	Corps Safety Engineering	COSEN	43

Table 1: Distribution Of FRSC Commands

S/N	ZONE	ZONAL CMDS	SECTOR CMDS	UNIT CMDS	OUTPOSTS	TOTAL FORMATIONS
1	RSHQ	0	0	1	1	2
2	RS1, Kaduna	1	4	27	9	41
2	RS2, Lagos	1	2	22	10	35
3	RS3, Yola	1	3	11	0	15
4	RS4, Jos	1	3	19	2	25
5	RS5, Benin	1	3	22	6	32
6	RS6, P/Harcourt	1	4	14	2	31
7	RS7, Gwarinpha	1	2	20	12	35
8	RS8, Ilorin	1	3	21	4	29
9	RS9, Enugu	1	4	17	1	23
10	RS10, Sokoto	1	3	10	2	16
11	RS11, Osogbo	1	3	21	3	28
12	RS12, Bauchi	1	3	13	0	17
	TOTAL	12	37	218	52	329

Table 2: Total War on Critical offences

S/N	ZONE	1st Q	2 nd Q
1	RS1, Kaduna	8399	12082
2	RS2, Lagos	8570	13621
3	RS3, Yola	2452	3496
4	RS4, Jos	6103	9475
5	RS5, Benin	5253	5634
6	RS6, P/Harcourt	4392	4406
7	RS7, Gwagwalada	8046	10332
8	RS8, Ilorin	4896	7603
9	RS9, Enugu	3245	842
10	RS10, Sokoto	2148	3160
11	RS11, Osogbo	8266	13002
12	RS12, Bauchi	3947	5455
	TOTAL	84521	89108

Chart 1: Chart Illustrating War on Critical Offences

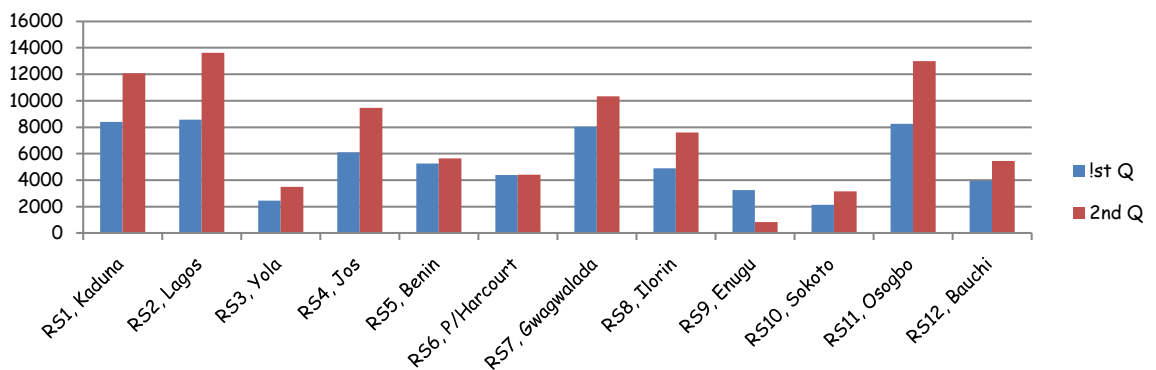


Table 3: SUMMARY OF OFFENDERS

S/N	ZONE	TOTAL OFFENDERS 1 st Q	TOTAL OFFENDERS 2 nd Q
1.	RS1, Kaduna	20348	22312
2.	RS2, Lagos	19020	22013
3.	RS3, Yola	6036	6130
4.	RS4, Jos	11284	13770
5.	RS5, Benin	8313	8580
6.	RS6, P/Harcourt	8188	6684
7.	RS7, Gwarimpa	14654	13124
8.	RS8, Ilorin	8150	9898
9.	RS9, Enugu	4440	1246
10.	RS10, Sokoto	4049	5237
11.	RS11, Osogbo	14169	17799
12.	RS12, Bauchi	7740	7822
TOTAL		126391	134615

Chart 2: Chart Illustrating Offenders

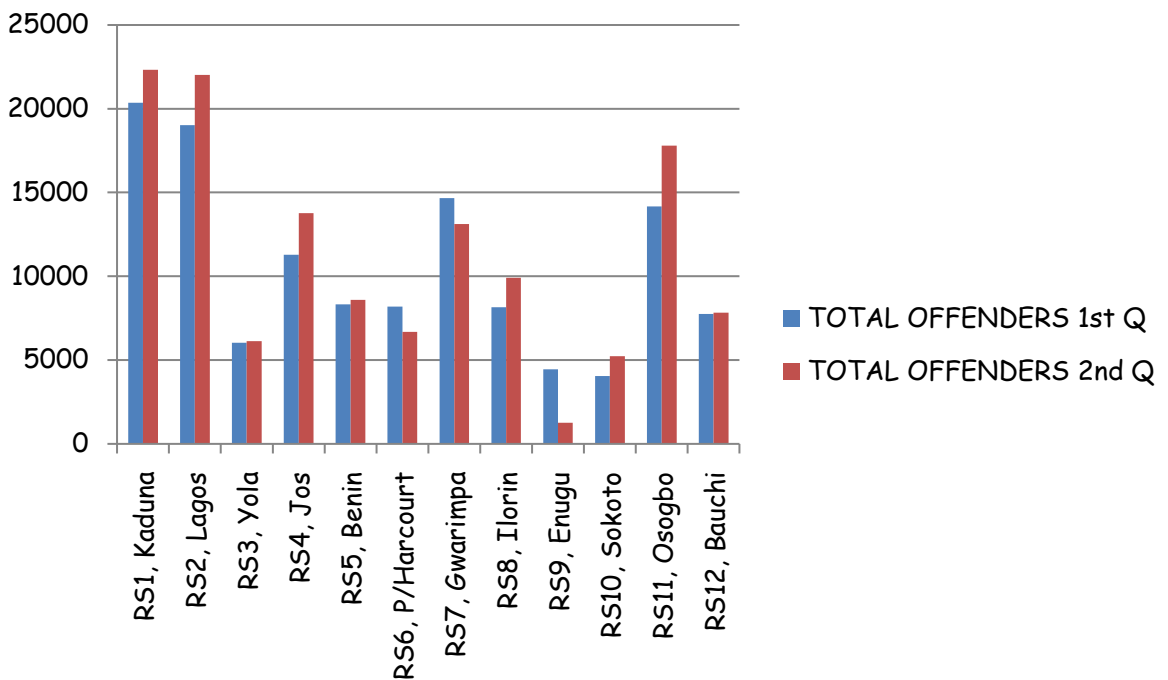
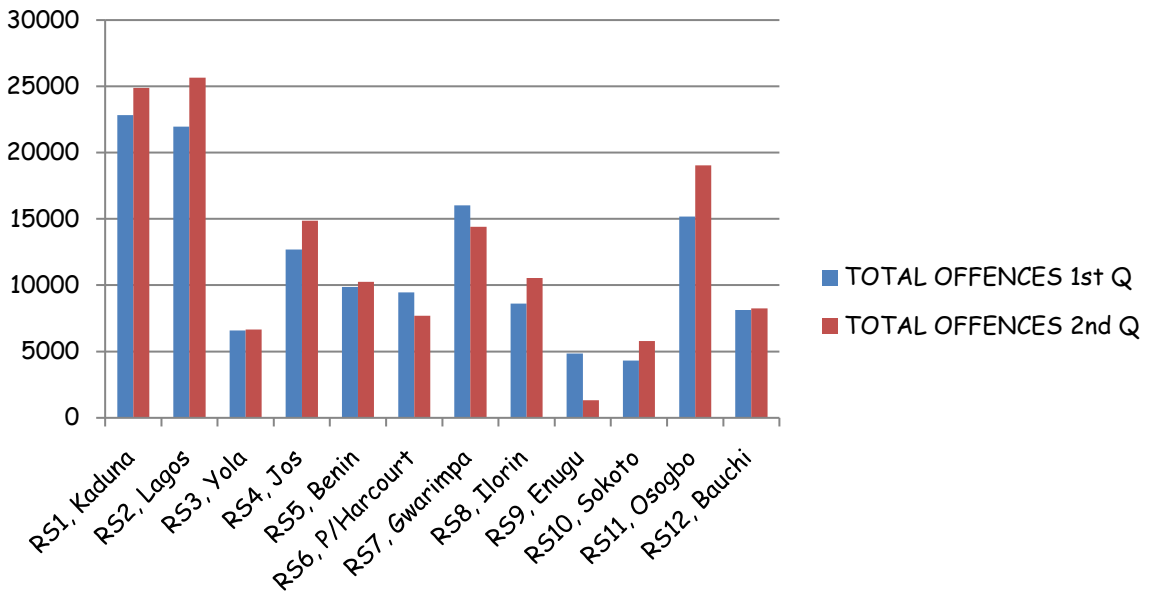


Table 4: SUMMARY OF OFFENCES

S/N	ZONE	TOTAL OFFENCES 1 st Q	TOTAL OFFENCES 2 nd Q
1.	RS1, Kaduna	22839	24882
2.	RS2, Lagos	21951	25665
3.	RS3, Yola	6573	6657
4.	RS4, Jos	12680	14858
5.	RS5, Benin	9870	10241
6.	RS6, P/Harcourt	9455	7696
7.	RS7, Gwarimpa	16010	14410
8.	RS8, Ilorin	8615	10540
9.	RS9, Enugu	4840	1312
10.	RS10, Sokoto	4306	5788
11.	RS11, Osogbo	15167	19045
12.	RS12, Bauchi	8119	8242
TOTAL		140425	149336

Chart 3: Chart Illustrating Offences





Admin and Human Resources

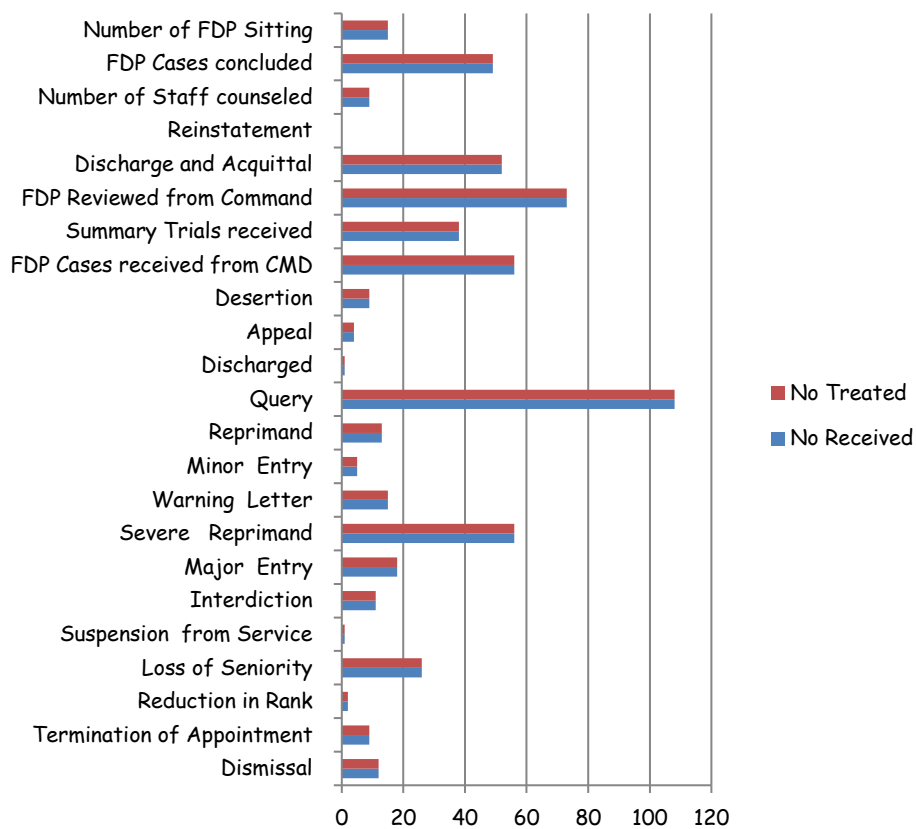
Table 5: General Admin Activities

S/N	Activity/Programme	No Received	No Treated	No Outstanding
a.	Application for Maternity leave.	72	72	0
b.	Application for Permission to get Married	47	47	0
c.	Application for Change of Name	30	30	0
d.	Application for Annual Leave	57	57	0
e.	Application for Pass	28	28	0
f.	Notifications of Death	26	26	0
g.	Publications received	0	0	0
h.	Total Incoming Mails	2845	2845	0
i.	Total Outgoing Mails	2810	2810	0
j.	NHF Passbook Update	125	125	0
k.	Number of Death	14	14	0
l.	Payment of NHF to Retirees	14	14	0
m.	NHF Passbook Replacement	0	0	0
n.	NHF Registration Forms	0	0	0
o.	Six thousand, three hundred and twenty-six (6,326) mails were received from various Departments and Corps Offices.	Six thousand, three hundred and twenty-six (6,326) mails were dispatched to Departments & Corps Offices.	Treated	Completed
p.	Four thousand, eight hundred and fifty-three (4,853) mails were received from Field Commands.	Four thousand, eight hundred and fifty-three (4,853) mails were dispatched to Field Commands.	Treated	Completed
r.	Total number of Corps Members	62	62	Treated
s.	Total number of IT Students	12	12	Treated

Table 6: Disciplinary Cases Treated

S/N	Activities/ Punishments	No Received	No Treated	No Outstanding
a.	Dismissal	12	12	0
b.	Termination of Appointment	9	9	0
c.	Reduction in Rank	2	2	0
d.	Loss of Seniority	26	26	0
e.	Suspension from Service	1	1	0
f.	Interdiction	11	11	0
g.	Major Entry	18	18	0
h.	Severe Reprimand	56	56	0
i.	Warning Letter	15	15	0
j.	Minor Entry	5	5	0
k.	Reprimand	13	13	0
l.	Query	108	108	0
m.	Discharged	1	1	0
n.	Appeal	4	4	0
o.	Desertion	9	9	0
p.	FDP Cases received from CMD	56	56	0
q.	Summary Trials received	38	38	0
r.	FDP Reviewed from Command	73	73	0
s.	Discharge and Acquittal	52	52	0
t.	Reinstatement	-	-	0
u.	Number of Staff counseled	9	9	0
v.	FDP Cases concluded	49	49	0
w.	Number of FDP Sitting	15	15	0
	TOTAL	582	582	0

Chart 4: Chart Illustrating Disciplinary Cases Treated





Finance and Accounts Department

Table 7: Incoming Requests For Variation Of Staff Salaries (Officers)

INCOMING REQUESTS FOR VARIATION OF STAFF SALARIES (Officers)	NO. RECEIVED	NO. TREATED	ON-GOING
1 st Quarter 2021	75	75	0
2 nd Quarter 2021	46	46	0
Total	121	121	

Chart 5: Chart Illustrating Requests For Variation Of Staff Salaries (Officers)

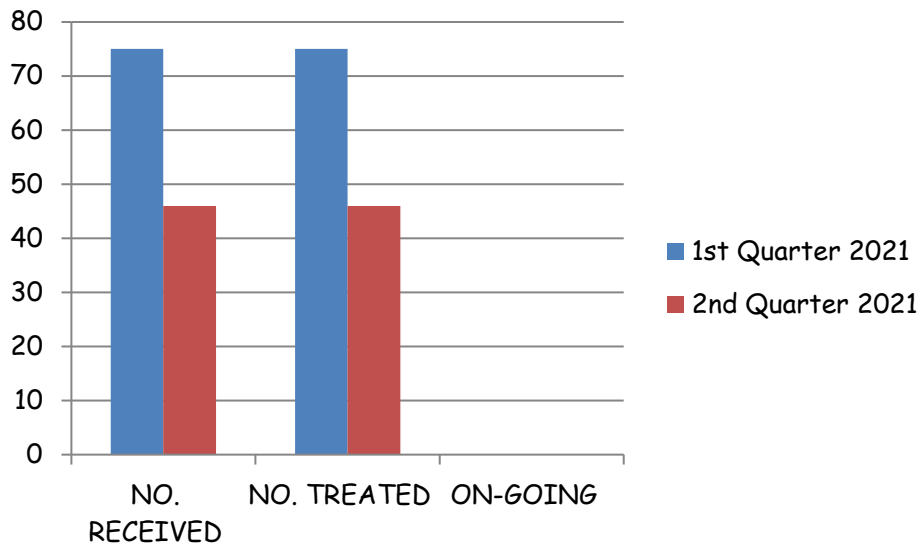


Table 8: Incoming Requests For Variation Of Staff Salaries (Marshals)

INCOMING REQUESTS FOR VARIATION OF STAFF SALARIES (Marshals)	NO. RECEIVED	NO. TREATED	ON-GOING
1 st Quarter 2021	272	272	0
2 nd Quarter 2021	309	309	0
Total	581	581	0

Chart 6: Incoming Requests For Variation Of Staff Salaries (Marshals)

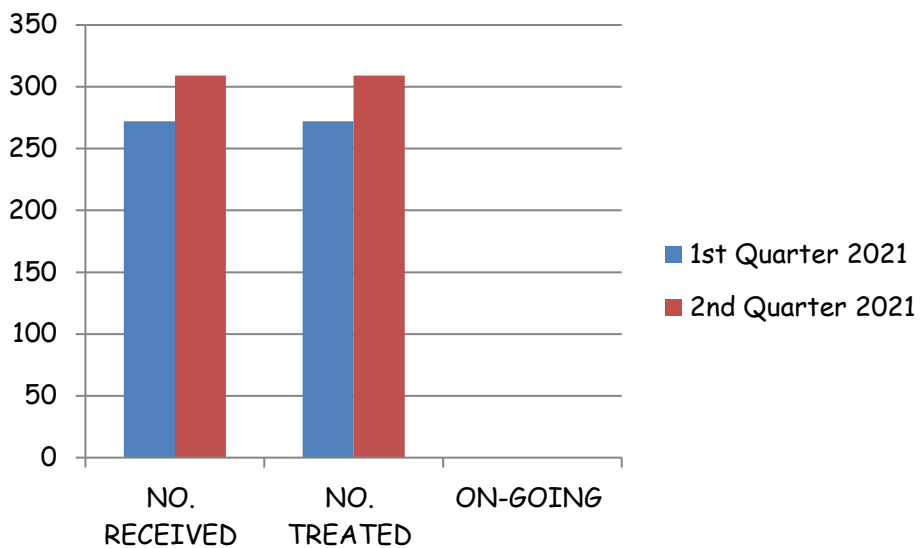
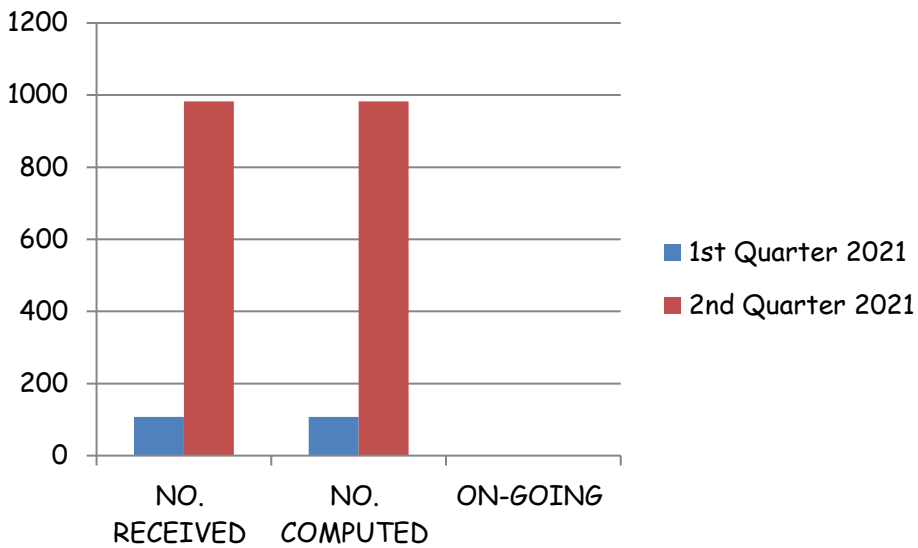


Table 9: Summary of Transfer Allowances Activities

TRANSFER ALLOWANCE COMPUTATION	NO. RECEIVED	NO. COMPUTED	ON-GOING
1 st Quarter 2021	108	108	0
2 nd Quarter 2021	982	982	0
Total			

Chart 7: Summary of Transfer Allowances Activities



Motor Vehicle Administration

Table 10: Table Showing National Drivers License (NDL) Produced in 1ST Quarter 2021 and 2nd Quarter, 2021

S/N	Category	1st quarter, 2021	2nd quarter, 2021	DIFFERENCE
1	Government Motor Vehicle	782	1,171	+389
2	Government Articulated	0	0	0
3	Private Motor Vehicle	67,047	95,498	+28,451
4	Commercial Motor Vehicle	27,543	26,688	-855
5	Articulated	380	2	-378
6	Fancy	355	354	-1
7	Out of Series	80	82	+2
8	Military/Paramilitary	122	385	+263
9	FG	1,449	671	-778
10	Diplomatic	0	0	0
	Rep	0	0	0
	Comp	91	25	-66
11	Dealer	1,401	304	-1,097
	Sub Total	99,250	125,180	+25,930

Table 28 B. Showing Motor Cycle number plate in Category produced in 1st and 2nd quarter, 2021

1	Government Motor Cycle	239	5,869	+5,630
2	Private Motor Cycle	34,283	46,056	+11,773
3	Commercial Motor Cycle	34,300	59,723	+25,423
4	Military/Paramilitary Motor Cycle	0	0	0
5	Fancy	11	4	-7
6	FG	9	6	-3
7	Dealer	60	0	-60
	Sub Total	68,902	111,658	+42,756

Table 28 C. Showing Reprint of number plate in Category produced in 1st and 2nd quarter, 2021

1	Motor Vehicle	4	4	0
2	Motor Cycle	1	1	0
	Sub Total	5	5	0

Table 28 D. Showing Summary of number plate produced in 1st and 2nd quarter, 2021

a	Motor Vehicle	99,250	125,180	+25,930
b	Motorcycle	68,902	111,658	+42,756
c	Reprint	5	5	0
	Grand Total	168,157	236,843	+68,686

Table 11: Table Showing National Drivers License (NDL) Production By State

DRIVER'S LICENCES PROCESSED PER STATE 2ND QUARTER, 2021 ON MONTHLY BASIS													
S/N	STATE	Apr. 2021		May, 2021		Jun. 2021		Total		Total		TOTAL	
		NDL	MCDL	NDL	MCDL	NDL	MCDL	NDL	MCDL	NDL	MCDL		
1	ABIA	979	5	984	664	5	669	295	2	297	1,938	12	1,950
2	ADAMAWA	642	33	675	127	4	131	513	17	530	1,282	54	1,336
3	AKWA-IBOM	607	3	610	227	3	230	954	2	956	1,788	8	1,796
4	ANAMBRA	1,337	4	1,341	951	0	951	1,594	2	1,596	3,882	6	3,888
5	BAUCHI	511	36	547	291	26	317	565	40	605	1,367	102	1,469
6	BAYELSA	347	215	562	141	136	277	387	267	654	875	618	1,493
7	BENUE	602	1	603	486	2	488	568	4	572	1,656	7	1,663
8	BORNO	792	97	889	593	53	646	462	45	507	1,847	195	2,042
9	CROSS RIVER	635	2	637	368	1	369	848	2	850	1,851	5	1,856
10	DELTA	3,413	59	3,472	2,257	144	2,401	3,531	3,437	6,968	9,201	3,640	12,841
11	EBONYI	254	1	255	156	0	156	268	1	269	678	2	680
12	EDO	3,242	9	3,251	1,725	5	1,730	1,934	10	1,944	6,901	24	6,925
13	EKITI	433	1	434	311	1	312	500	1	501	1,244	3	1,247
14	ENUGU	969	0	969	1,521	5	1,526	1,533	10	1,543	4,023	15	4,038
15	FCT	5,581	13	5,594	4,764	6	4,770	5,722	7	5,729	16,067	26	16,093
16	GOMBE	357	6	363	208	6	214	89	7	96	654	19	673
17	IMO	1,075	0	1,075	1,236	0	1,236	1,309	0	1,309	3,620	0	3,620
18	JIGAWA	145	0	145	113	4	117	195	3	198	453	7	460
19	KADUNA	2,515	191	2,706	1,421	116	1,537	2,317	211	2,528	6,253	518	6,771
20	KANO	1,738	3	1,741	1,080	2	1,082	1,725	4	1,729	4,543	9	4,552
21	KATSINA	452	9	461	449	2	451	303	2	305	1,204	13	1,217
22	KEBBI	164	2	166	104	0	104	200	0	200	468	2	470
23	KOGI	351	6	357	619	6	625	517	7	524	1,487	19	1,506
24	KWARA	534	1	535	217	3	220	483	3	486	1,234	7	1,241
25	LAGOS	14,226	2	14,228	10,936	0	10,936	13,629	1	13,630	38,791	3	38,794
26	NASARAWA	899	4	903	546	0	546	1,306	0	1,306	2,751	4	2,755
27	NIGER	643	0	643	536	0	536	727	3	730	1,906	3	1,909
28	OGUN	5,184	10	5,194	4,017	6	4,023	5,531	6	5,537	14,732	22	14,754
29	ONDO	1,081	3	1,084	874	1	875	1,058	2	1,060	3,013	6	3,019
30	OSUN	1,331	9	1,340	851	1	852	1,243	4	1,247	3,425	14	3,439
31	OYO	3,829	128	3,957	2,320	147	2,467	3,558	258	3,816	9,707	533	10,240
32	PLATEAU	1,237	16	1,253	1,011	4	1,015	1,094	33	1,127	3,342	53	3,395
33	RIVERS	3,537	10	3,547	2,036	1	2,037	2,042	8	2,050	7,615	19	7,634
34	SOKOTO	121	1	122	62	4	66	420	3	423	603	8	611
35	TARABA	150	9	159	61	4	65	0	0	0	211	13	224
36	YOBE	320	1	321	164	3	167	0	0	0	484	4	488
37	ZAMFARA	202	2	204	112	3	115	176	1	177	490	6	496
	TOTAL	60,435	892	61,327	43,555	704	44,259	57,596	4,403	61,999	161,586	5,999	167,585



Corps Legal Office

Table 12: Summary of Activities

S/N	SUBJECT MATTER	1 st Quarter	2 nd Quarter
a.	Number of Mobile Court sessions conducted within the quarter	3	0
b.	Number of Offenders Prosecuted Number of Offenders convicted Number of Offenders Acquitted	177 157 20	43 38 4
c.	Number of Civil cases pending in regular Courts	177 Civil	111
d.	Number of cases won/ lost in regular courts	3 Civil cases won 3 Civil case lost 1 Criminal case won 1 Criminal case lost	2 Civil cases won 7 Civil case lost No Criminal case won No Criminal case lost
e.	Number of Criminal cases prosecuted by the Corps	60	57
f.	Number of Civil cases on Appeal	27	23
	Number of cases settled via ADR	0	1
g.	Number of Commands that conducted auction in the quarter under review.	2	0
h.	Number of MOUs, Tenancy Agreements and other Consultancy agreements prepared and executed.	65 Prepared 24 Executed	37 Prepared 55 Executed
i.	Number Of Disciplinary cases reviewed for the quarter.	90	84

Corps Medical and Rescue Office

Table 13: Patients Attended to by FRSC Hospitals and Roadside Clinics Nationwide

S/N	COMMAND	RTC Cases	Medical Cases
1	RS1.16 KAKAU	31	72
2	RS1.17/BYERO	77	20
3	RS1.25 CHIROMAWA	66	100
4	RS1.33 KOZA	41	67
5	RS1.34 MALFASHI	41	121
6	RS2.2 ITORI	10	165
7	RS2.25 SGM	16	62
8	RS3.13 GIREI	40	68
9	RS4.13 H/KIBO	80	133
10	RS4.23 K/ALA	10	160
11	RS4.24 ALIADE	0	198
12	RS4.3 SHABU	9	59
13	RS5.12OLUKU	4	188
14	RS5.23 I/UKU	3	20
15	RS5.33 NTEJE	32	141
16	RS6.11 ELEME	2	146
17	RS7.12 ABAJI	16	89
18	RS7.21 MOKWA	0	111
19	RS8.11 B/SAADU	7	88
20	RS8.12 OMU ARAN	14	135
21	RS8.15 OLOORU	116	142
22	RS8.34 ZARIAGI	16	83
23	RS9.32 KM 78 ABA	6	162
24	RS10.31 T. MAFARA	0	135
25	RS11.12 ILESHA	57	70
26	RS11.13 I/IJESHA	11	125
27	RS12.13 ALKALERI	39	153
28	RS12.25 MAINOK	6	144
	Total	750	3157



Chart 8: RTC Cases and Medical Cases Chart illustrating Summary of Patients Attended to

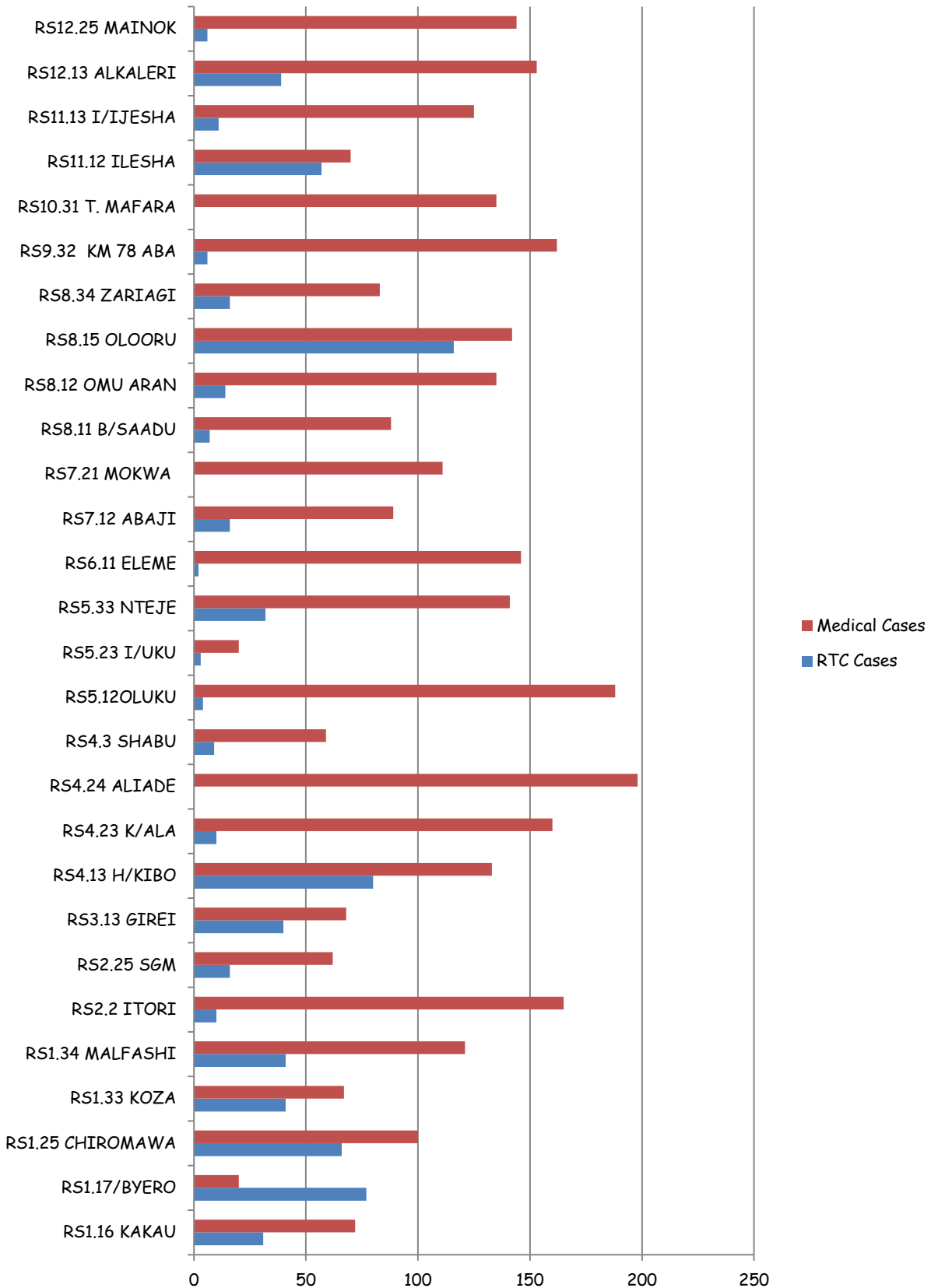




Table 14: EMERGENCY AMBULANCE SERVICE SCHEME (AKA ZEBRA)

UNITS	RTC	Killed	Injured	Involved
ZEBRA 1	15	2	19	54
ZEBRA 2	25	2	22	86
ZEBRA 3	45	3	59	183
ZEBRA 4	55	7	90	183
ZEBRA 5	87	10	172	379
ZEBRA 6	41	15	119	265
ZEBRA 7	23	11	87	153
ZEBRA 8	30	8	81	180
ZEBRA 9	42	10	103	318
ZEBRA 10	4	3	12	24
ZEBRA 11	21	1	61	101
ZEBRA 12	49	2	29	249
ZEBRA 13	30	10	77	286
ZEBRA 14	25	13	67	135
ZEBRA 15	34	18	108	235
ZEBRA 16	29	5	110	215
ZEBRA 17	17	6	43	106
ZEBRA 18	4	0	8	29
ZEBRA 19	11	4	40	136
ZEBRA 20	22	5	32	137
ZEBRA 21	19	18	50	125
ZEBRA 22	22	5	96	132
ZEBRA 23	29	9	89	168
ZEBRA 24	19	2	38	72
ZEBRA 25	59	11	110	256
ZEBRA 26	10	1	28	62
ZEBRA 27	24	28	140	262
ZEBRA 28	19	2	48	158
ZEBRA 29	5	1	18	43
ZEBRA 30	13	0	58	67
ZEBRA 31	17	9	28	75
ZEBRA 32	0	0	0	0
ZEBRA 33	4	0	1	9
ZEBRA 34	32	8	87	173
ZEBRA 35	15	4	77	154
ZEBRA 36	20	24	105	198
ZEBRA 37	30	7	106	217
ZEBRA 38	37	4	38	162
ZEBRA 39	0	0	0	0
ZEBRA 40	13	2	31	59
ZEBRA 41	17	6	72	91
ZEBRA 42	32	0	79	105
ZEBRA 43	15	2	64	156
ZEBRA 44	19	4	38	75
ZEBRA 45	18	15	91	139
ZEBRA 46	2	7	2	9
ZEBRA 47	21	3	25	136
ZEBRA 48	6	2	18	55
ZEBRA 49	7	1	21	36
ZEBRA 50	5	5	3	15
ZEBRA 51	24	11	89	202
TOTAL	1162	326	2989	6865

**Table 15: Emergency Ambulance Service Scheme (EASS) Zebra 1-43)
Zebra Locations**

S/N	ZEBRA	ZEBRA LOCATION	CUG NUMBER
1	ZEBRA 1	OLD PARADE GROUND AREA 10 GARKI, ABUJA	08077690898
2	ZEBRA 2	CBD OPPOSITE FEDERAL SECRETARIAT, ABUJA.	08077690897
3	ZEBRA 3	CITY GATE, ABUJA.	08077690896
4	ZEBRA 4	KUBWA ROAD, ABUJA.	08077690899
5	ZEBRA 5	KEFFI BY FLY OVER, NASSARAWA STATE.	08077690126
6	ZEBRA 6	YANGOJE, ALONG LOKOJA ROAD, FCT.	08073374912
7	ZEBRA 7	SABON WUSE, ALONG KADUNA ROAD NIGER STATE.	08056294319
8	ZEBRA 8	GIRI JUNCTION ALONG GWAGWALADA ZUBA ROAD ABUJA.	08151790087
9	ZEBRA 9	KOTON KARFE KOGI STATE.	08151790088
10	ZEBRA 10	BARDE JUNCTION ALONG JOS ROAD KADUNA STATE.	08151790089
11	ZEBRA 11	MARARABAN JAMA'A ROUND ABOUT, JOS.	08151790090
12	ZEBRA 12	KUGBO, NYANYA ROAD BY KARU FLY OVER, ABUJA.	08151790091
13	ZEBRA 13	GEGU, KOGI STATE.	08150654679
14	ZEBRA 14	AIRPORT JUNCTION ALONG BAUCHI GOMBE ROAD, GOMBE STATE.	08150654680
15	ZEBRA 15	KATARI, KADUNA STATE.	08150654681
16	ZEBRA 16	ABAJI, FCT.	08150654682
17	ZEBRA 17	KUDU, NIGER STATE.	08150654683
18	ZEBRA 18	OWAN ESEGIE EDO STATE.	08150654684
19	ZEBRA 19	IPETU IJESA, OSUN STATE.	08150654685
20	ZEBRA 20	OWO JUNCTION, ONDO STATE.	08150564686
21	ZEBRA 21	ILARA MOKIN ONDO STATE.	08150564687
22	ZEBRA 22	SHUWARIN, JIGAWA STATE.	08058298541
23	ZEBRA 23	AIR PORT ROAD, ILORIN KWARA STATE.	08058298542
24	ZEBRA 24	MUTUM BIYU, TARABA STATE.	08058298543
25	ZEBRA 25	BY WOLE SOYINKA FRSC HOUSING ESTATE SIGN POST GOSHEN.	09053976950
26	ZEBRA 26	CHAM, GOMBE STATE.	09053976951
27	ZEBRA 27	DOKA, KADUNA STATE	09053976952
28	ZEBRA 28	JOS BY-PASS PLATEAU STATE	09053976953
29	ZEBRA 29	ALKALERI, BAUCHI STATE	09053976954
30	ZEBRA 30	TORO/MAGAMA, BAUCHI STATE	09053976955
31	ZEBRA 31	ABAKALI, EBONYI STATE	09053976956
33	ZEBRA 32	ABAKALI ROAD ENUGU STATE	09053976957
33	ZEBRA 33	YAHÉ, CROSS RIVER STATE	09053976958
34	ZEBRA34	ZUBA, FCT	09053976959
35	ZEBRA 35	ZARIA TOLL GATE, KADUNA STATE	09053976960
36	ZEBRA 36	CHIROMAWA, KANO STATE	09053976961
37	ZEBRA 37	OGUNMAKIN, OGUN STATE	09053976962
38	ZEBRA 38	IDU RAILWAY STATION	09058611870
39	ZEBRA 39	ALHERI CAMP	09058611871
40	ZEBRA 40	MANDO	09058611880
41	ZEBRA 41	KADUNA AIRPORT	08052898420
42	ZEBRA 42	POLY GATE, TARABA STATE	08052898422
43	ZEBRA 43	NATACO JUNCTION LOKOJA	08111398098
44	ZEBRA 44	SIUN ABEOKUTA	08111398107
45	ZEBRA 45	DARAZO, BAUCHI	08111398160
46	ZEBRA 46	IBEJU LAGOS	08111398172
47	ZEBRA 47	DUTSE ALHAJI, FCT	08111398173
48	ZEBRA 48	IKARE, EKITI STATE	-
49	ZEBRA 49	IKOM CROSS RIVER	-
50	ZEBRA 50	IJEBU ODE	-
51	ZEBRA 51	HAWAN KIBO, PLATEAU STATE	-

Corps Public Education Office

Table 16: Details Of Public Education Activities

SN	COMM AND	Radio Programmes	TV Programmes	News paper Publications	Motor park Rallies	Church Advocacy	Mosque Advocacy	School Advocacy	Market Advocacy	Road Shows	Town Hall Meetings	Visits to TRD/STK	Seminars/workshops	Total
1	RS1HQ	123	128	70	222	44	27	25	87	34	15	33	11	819
2	RS2HQ	157	145	104	345	34	22	41	98	44	22	75	20	1107
3	RS3HQ	132	110	34	187	21	19	15	32	28	10	44	15	647
4	RS4HQ	115	100	44	124	20	18	22	44	23	11	36	12	569
5	RS5HQ	111	121	32	243	21	16	15	65	35	15	46	11	731
6	RS6HQ	117	122	40	178	31	11	25	46	21	11	51	10	663
7	RS7HQ	123	123	35	198	22	21	26	32	33	14	45	13	685
8	RS8HQ	122	128	33	176	19	18	28	37	21	17	33	15	647
9	RS9HQ	121	125	37	213	26	11	22	33	24	9	41	13	675
10	RS10HQ	127	105	45	155	19	20	14	21	22	13	22	11	574
11	RS11HQ	124	120	31	134	25	16	21	28	25	16	20	18	578
12	RS12HQ	126	92	29	113	21	17	14	22	25	12	34	15	520
	TOTAL	1498	1419	32	2288	303	216	268	545	335	165	480	164	8215

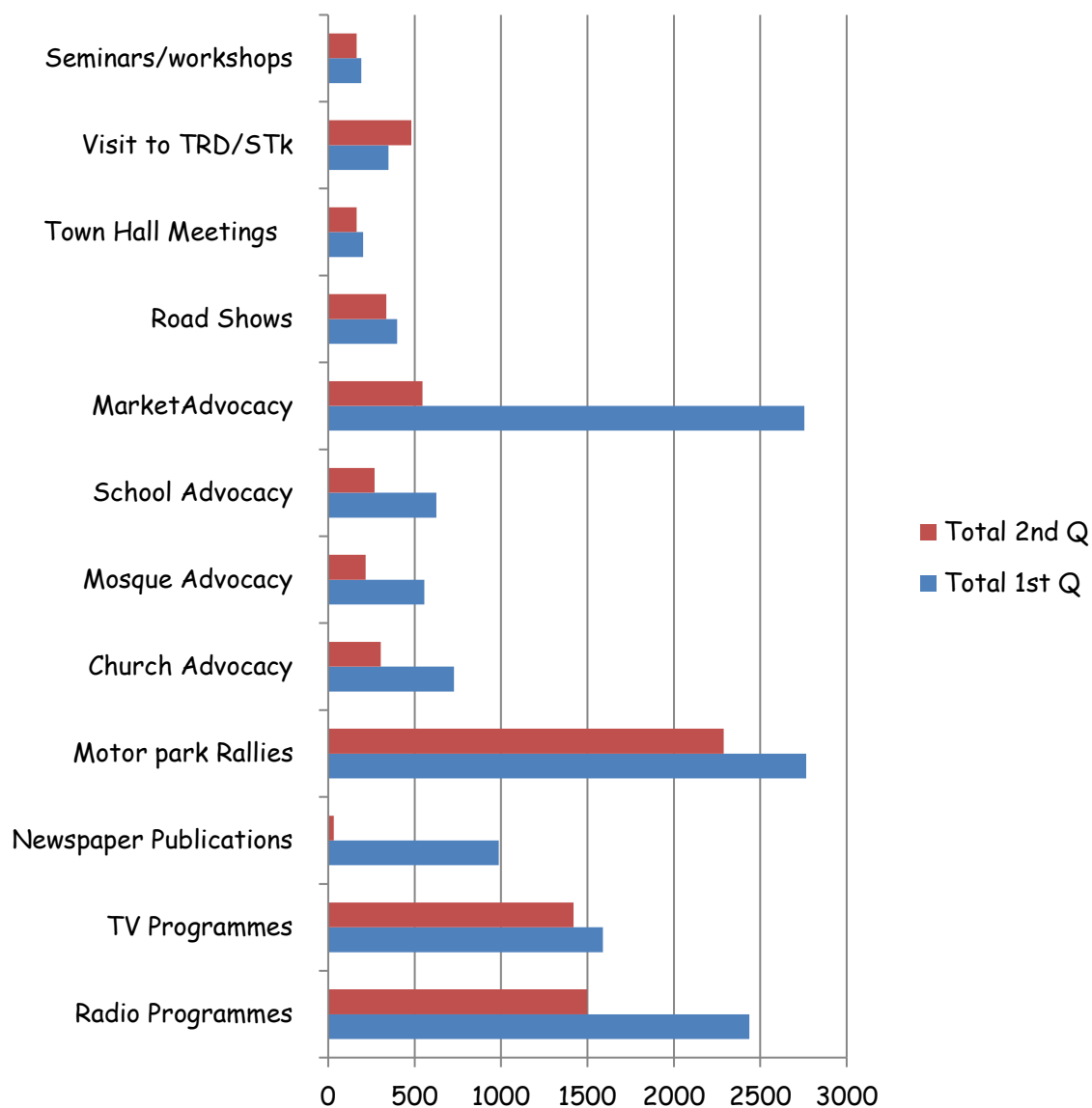
LEGEND:

- RP: Radio Programme
- TVP: TV Programme
- NPP: News Paper Publication
- MPR: Motor Park Rallies
- NDL: Lecture on NDL
- ADV: Advocacy Visit
- DPE: Domesticated Public Education

Table 17: CPEO Activities comparison

SN	COMMAND	Radio Programmes	TV Programmes	Newspaper Publications	Motor park Rallies	Church Advocacy	Mosque Advocacy	School Advocacy	Market Advocacy	Road Shows	Town Hall Meetings	Visit to TRD/STk	Seminars /workshops	Total
	Total 1 st Q	2437	1589	987	2766	728	555	625	2755	399	202	349	191	13583
	Total 2 nd Q	1498	1419	32	2288	303	216	268	545	335	165	480	164	8215
	Grand Total	3935	3008	1019	5054	1031	771	893	3300	734	367	829	355	21798

Chart 9: Illustration of Comparative analysis of Public Education Activities



Corps Transport and Standardization Office

Table 18: Comparative Summary of Fleet Operators' Travel

Quarterly	Fleet Operators Registered	Passenger Travelled	Vehicle Travelled	Luxury Bus Travelled	Advocacy Visit	Kilometers Covered
First Quarter, 2021	18	13,705,337	1,176,444	6,871	10,054	287,887,211
Second Quarter 2021	4	15,716,434	897,409	6,871	9,026	252,616,376
Total	22	29,421,771	2,073,853	13,742	19,080	540,503,587

Table 19: Summary Of RTC Involving Fleet Operators

Quarterly	Number Of Cases	Number Killed	Number Injured	Total Casualties	Number Of Persons Involved
First Quarter, 2021	84	130	382	512	909
Second Quarter 2021	51	24	172	196	493
Total	135	154	554	708	1402

Chart 10: Summary Of RTC Involving Fleet Operators

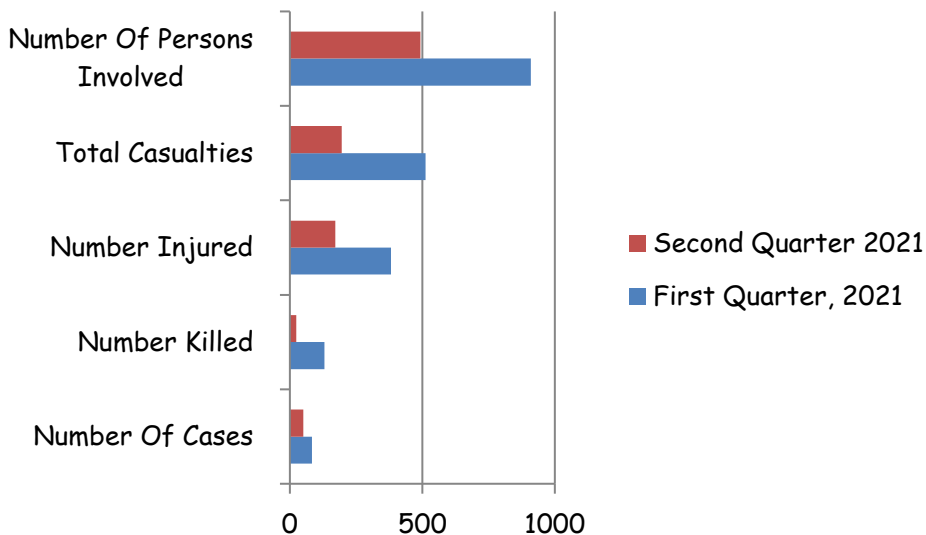
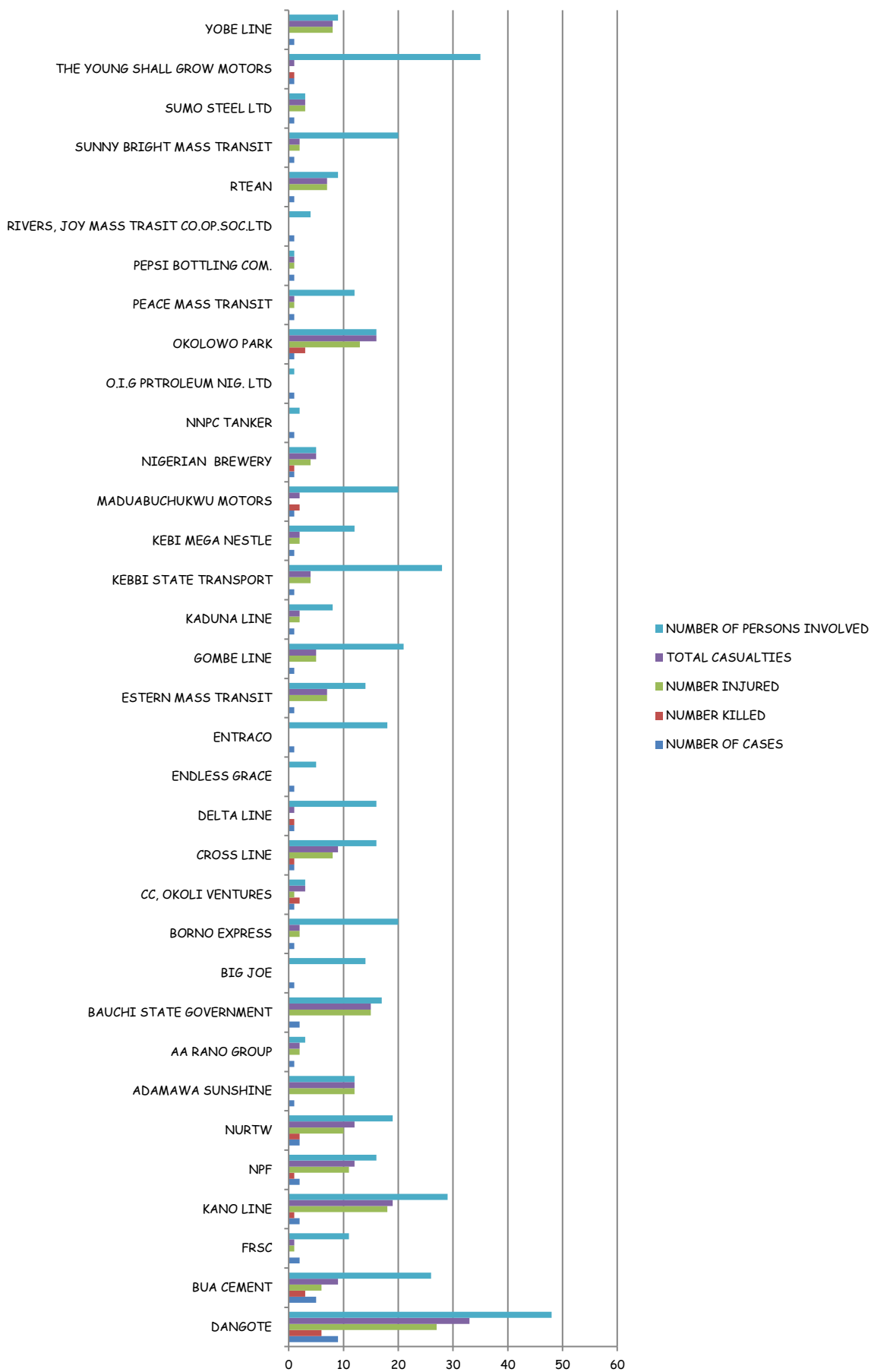


Table 20: Summary Of RTC Involving Fleet Operators

S/NO	FLEET OPERATOR	NUMBER OF CASES	NUMBER KILLED	NUMBER INJURED	TOTAL CASUALTIES	NUMBER OF PERSONS INVOLVED
1	DANGOTE	9	6	27	33	48
2	BUA CEMENT	5	3	6	9	26
3	FRSC	2	0	1	1	11
4	KANO LINE	2	1	18	19	29
5	NPF	2	1	11	12	16
6	NURTW	2	2	10	12	19
7	ADAMAWA SUNSHINE	1	0	12	12	12
8	AA RANO GROUP	1	0	2	2	3
9	BAUCHI STATE GOVERNMENT	2	0	15	15	17
10	BIG JOE	1	0	0	0	14
11	BORNO EXPRESS	1	0	2	2	20
12	CC, OKOLI VENTURES	1	2	1	3	3
13	CROSS LINE	1	1	8	9	16
14	DELTA LINE	1	1	0	1	16
15	ENDLESS GRACE	1	0	0	0	5
16	ENTRACO	1	0	0	0	18
17	ESTERN MASS TRANSIT	1	0	7	7	14
18	GOMBE LINE	1	0	5	5	21
19	KADUNA LINE	1	0	2	2	8
20	KEBBI STATE TRANSPORT	1	0	4	4	28
21	KEBI MEGA NESTLE	1	0	2	2	12
22	MADUABUCHUKWU MOTORS	1	2	0	2	20
23	NIGERIAN BREWERY	1	1	4	5	5
24	NNPC TANKER	1	0	0	0	2
25	O.I.G PRTROLEUM NIG. LTD	1	0	0	0	1
26	OKOLOWO PARK	1	3	13	16	16
27	PEACE MASS TRANSIT	1	0	1	1	12
28	PEPSI BOTTLING COM.	1	0	1	1	1
29	RIVERS, JOY MASS TRASIT CO.OP.SOC.LTD	1	0	0	0	4
30	RTEAN	1	0	7	7	9
31	SUNNY BRIGHT MASS TRANSIT	1	0	2	2	20
32	SUMO STEEL LTD	1	0	3	3	3
33	THE YOUNG SHALL GROW MOTORS	1	1	0	1	35
34	YOBE LINE	1	0	8	8	9
TOTAL		51	24	172	196	493

Chart 11: Summary Of RTC Involving Fleet Operators



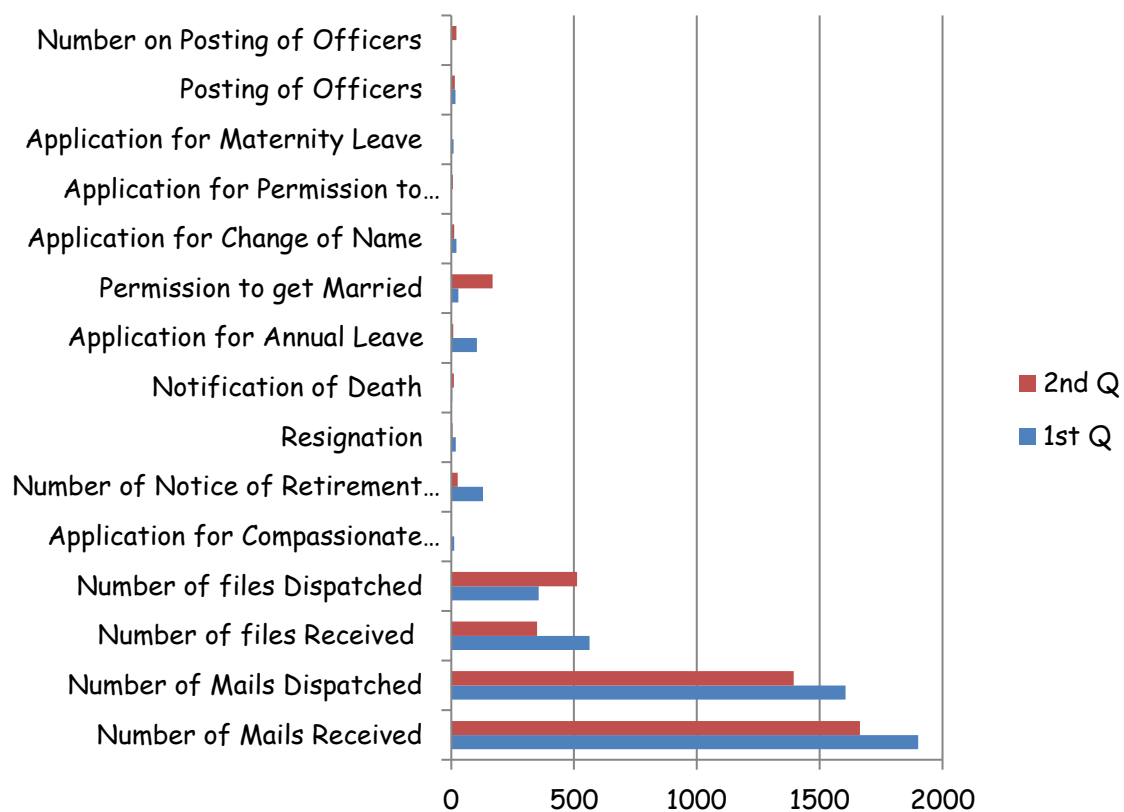


Corps Secretary

Table 21: Corps Secretary Activities

S/NO	Activities	1 st Q	2 nd Q	Total
1	Number of Mails Received	1901	1664	3565
2	Number of Mails Dispatched	1606	1394	3000
3	Number of files Received	563	350	913
4	Number of files Dispatched	356	512	868
5	Application for Compassionate Transfer	12	1	13
6	Number of Notice of Retirement from FRSC Issued	130	27	157
7	Resignation	19	6	25
8	Notification of Death	4	11	15
9	Application for Annual Leave	105	8	113
10	Permission to get Married	29	169	198
11	Application for Change of Name	21	12	33
12	Application for Permission to perform Holy Pilgrimage	2	7	9
13	Application for Maternity Leave	10	0	10
14	Posting of Officers	17	15	32
15	Number on Posting of Officers	0	22	22

Chart 12: Corps Secretary Activities

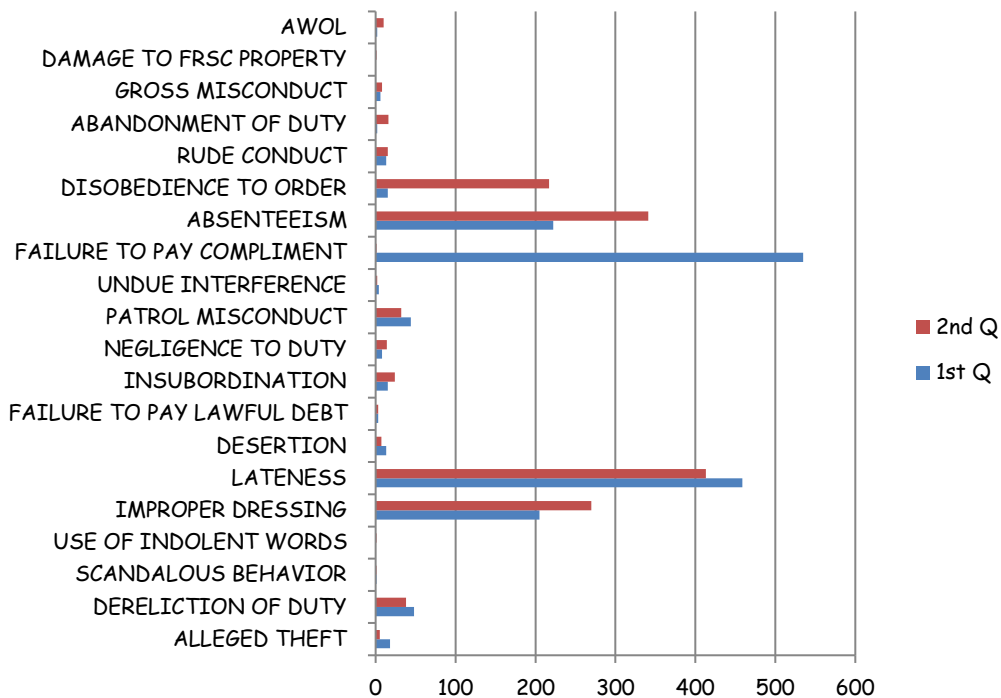


Corps Provost

Table 22: Misconduct in Details

S/N	OFFENCES	1 st Q	2 nd Q	TOTAL
1.	ALLEGED THEFT	18	5	23
2.	DERELICTION OF DUTY	48	38	86
3.	SCANDALOUS BEHAVIOR	1	1	2
4.	USE OF INDOLENT WORDS	0	1	1
5.	IMPROPER DRESSING	205	270	475
6.	LATENESS	459	413	872
7.	DESERTION	13	7	20
8.	FAILURE TO PAY LAWFUL DEBT	3	3	6
9.	INSUBORDINATION	15	24	39
10.	NEGLIGENCE TO DUTY	8	14	22
11.	PATROL MISCONDUCT	44	32	76
12.	UNDUE INTERFERENCE	4	2	6
13.	FAILURE TO PAY COMPLIMENT	535	1	536
14.	ABSENTEEISM	222	341	563
15.	DISOBEDIENCE TO ORDER	15	217	232
16.	RUDE CONDUCT	13	15	28
17.	ABANDONMENT OF DUTY	2	16	18
18.	GROSS MISCONDUCT	6	8	14
19.	DAMAGE TO FRSC PROPERTY	0	1	1
20.	AWOL	2	10	12
TOTAL		1625	1419	3044

Chart 13: Misconduct



COMPLAINTS RECEIVED FROM CUSTOMERS

Table 23: Complaints Received from Customers

NATURE OF COMPLAINTS	COMPLAINTS FROM COMMANDS	PHONE & SMS	EOMAILS	SUGGESTION BOXES	LETTERS	SOURCES OF COMPLAINT INTERNAL & EXTERNAL	TOTAL
OPS	110	10	0	6	0	126	252
NDL	84	73	0	2	0	159	318
OFL	9	1	0	5	0	15	30
Total	203	84	9	13	0	300	609

Number of appreciation through: e-mail, calls and SMS = **203**

Legend:

SCRAR Servicom Customer Relations Activities Register

OPS Operations

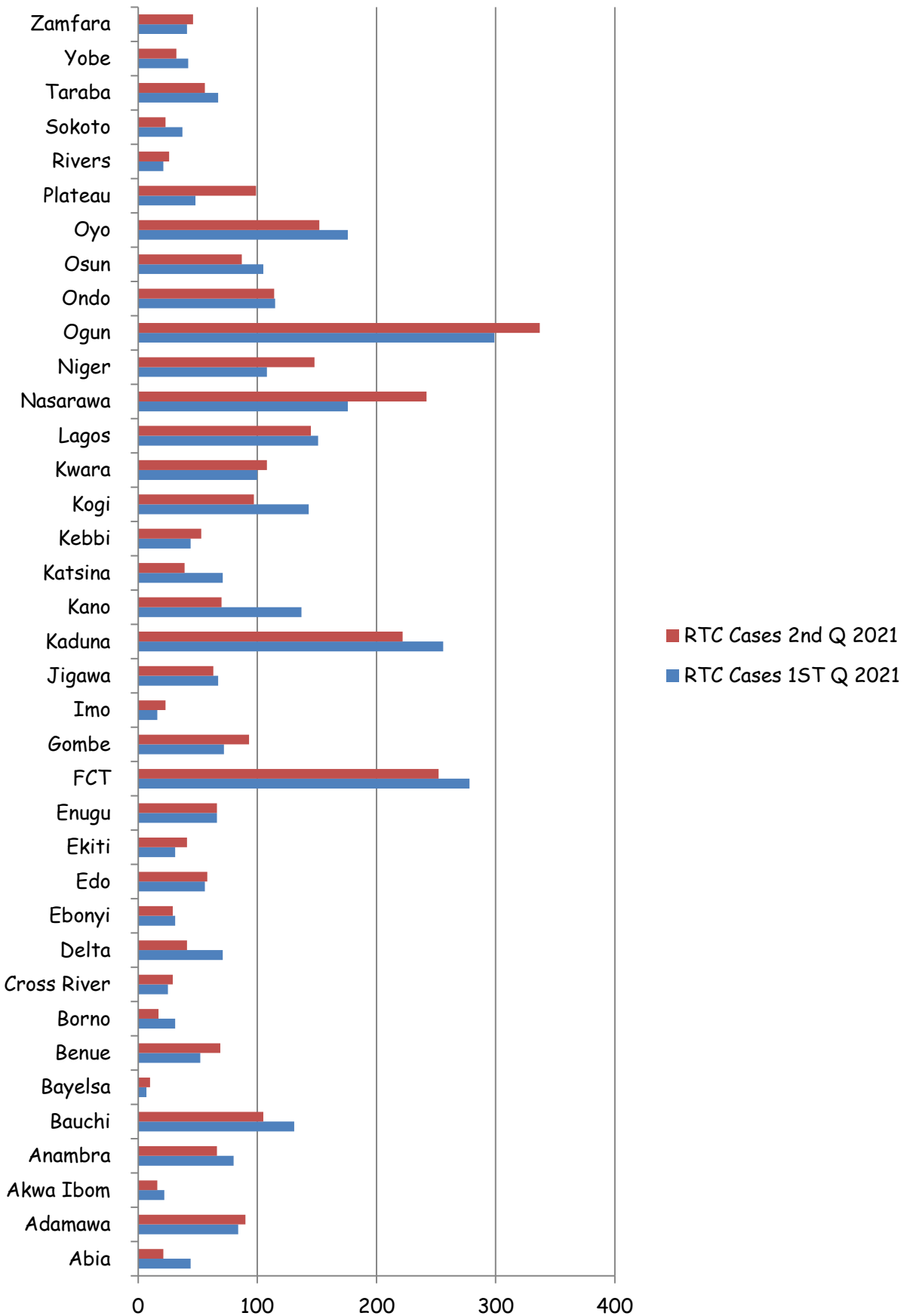
NDL National Drivers License


OFL Other Offences Violation

Table 24: RTC Cases on State Basis

STATE	RTC Cases 1 ST Q 2021	RTC Cases 2nd Q 2021
Abia	44	21
Adamawa	84	90
Akwa Ibom	22	16
Anambra	80	66
Bauchi	131	105
Bayelsa	7	10
Benue	52	69
Borno	31	17
Cross River	25	29
Delta	71	41
Ebonyi	31	29
Edo	56	58
Ekiti	31	41
Enugu	66	66
FCT	278	252
Gombe	72	93
Imo	16	23
Jigawa	67	63
Kaduna	256	222
Kano	137	70
Katsina	71	39
Kebbi	44	53
Kogi	143	97
Kwara	100	108
Lagos	151	145
Nasarawa	176	242
Niger	108	148
Ogun	299	337
Ondo	115	114
Osun	105	87
Oyo	176	152
Plateau	48	99
Rivers	21	26
Sokoto	37	23
Taraba	67	56
Yobe	42	32
Zamfara	41	46
TOTAL	3301	3185

Chart 14: RTC Cases on State Basis



**Table 25: Number Injured on State Basis**

STATE	Number Injured 1 st Q 2021	Number Injured 2nd Q 2021
Abia	119	69
Adamawa	251	280
Akwa Ibom	35	32
Anambra	147	138
Bauchi	634	418
Bayelsa	15	19
Benue	123	170
Borno	78	65
Cross River	50	74
Delta	196	136
Ebonyi	121	82
Edo	140	154
Ekiti	101	98
Enugu	222	157
FCT	518	483
Gombe	232	239
Imo	71	64
Jigawa	264	370
Kaduna	1149	837
Kano	604	286
Katsina	287	148
Kebbi	139	130
Kogi	425	246
Kwara	369	368
Lagos	243	266
Nasarawa	452	600
Niger	492	516
Ogun	670	637
Ondo	290	299
Osun	317	250
Oyo	399	400
Plateau	130	283
Rivers	54	65
Sokoto	119	87
Taraba	213	171
Yobe	235	168
Zamfara	153	213
TOTAL	10057	9018

Chart 15: Number Injured

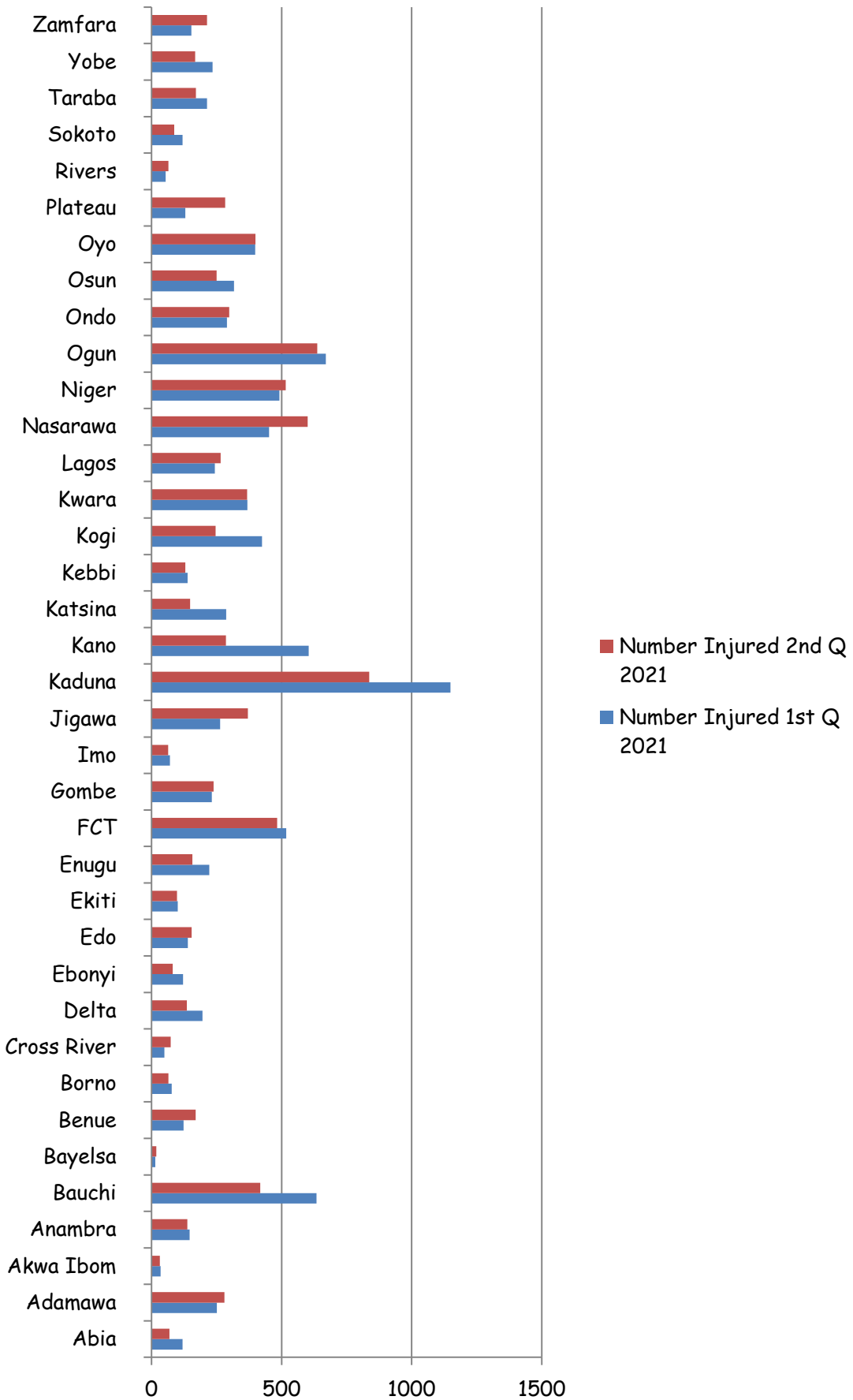



Table 26: Number Killed on State Basis


STATE	Number Killed for 1 st Q 2021	Number Killed for 2 nd Q 2021
Abia	35	19
Adamawa	21	21
Akwa Ibom	12	10
Anambra	9	18
Bauchi	115	46
Bayelsa	0	3
Benue	15	19
Borno	24	4
Cross River	30	5
Delta	51	16
Ebonyi	27	15
Edo	51	34
Ekiti	13	20
Enugu	37	22
FCT	56	37
Gombe	31	28
Imo	17	14
Jigawa	35	46
Kaduna	196	217
Kano	100	57
Katsina	29	40
Kebbi	21	4
Kogi	94	25
Kwara	69	80
Lagos	26	47
Nasarawa	77	53
Niger	93	103
Ogun	82	121
Ondo	43	47
Osun	43	52
Oyo	103	85
Plateau	15	23
Rivers	4	6
Sokoto	33	37
Taraba	12	12
Yobe	35	17
Zamfara	14	50
TOTAL	1668	1453

Chart 16: Number Killed on State Basis

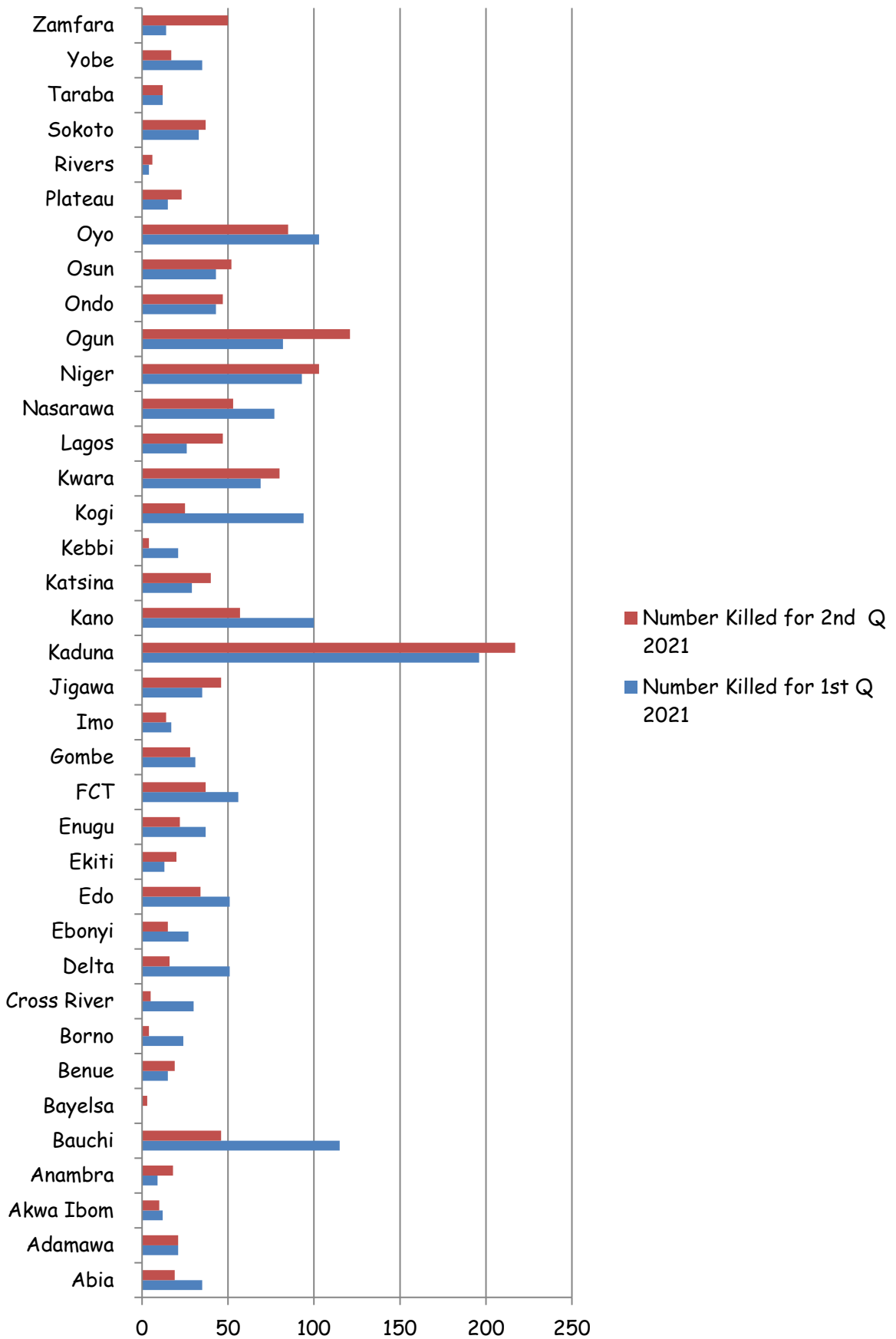

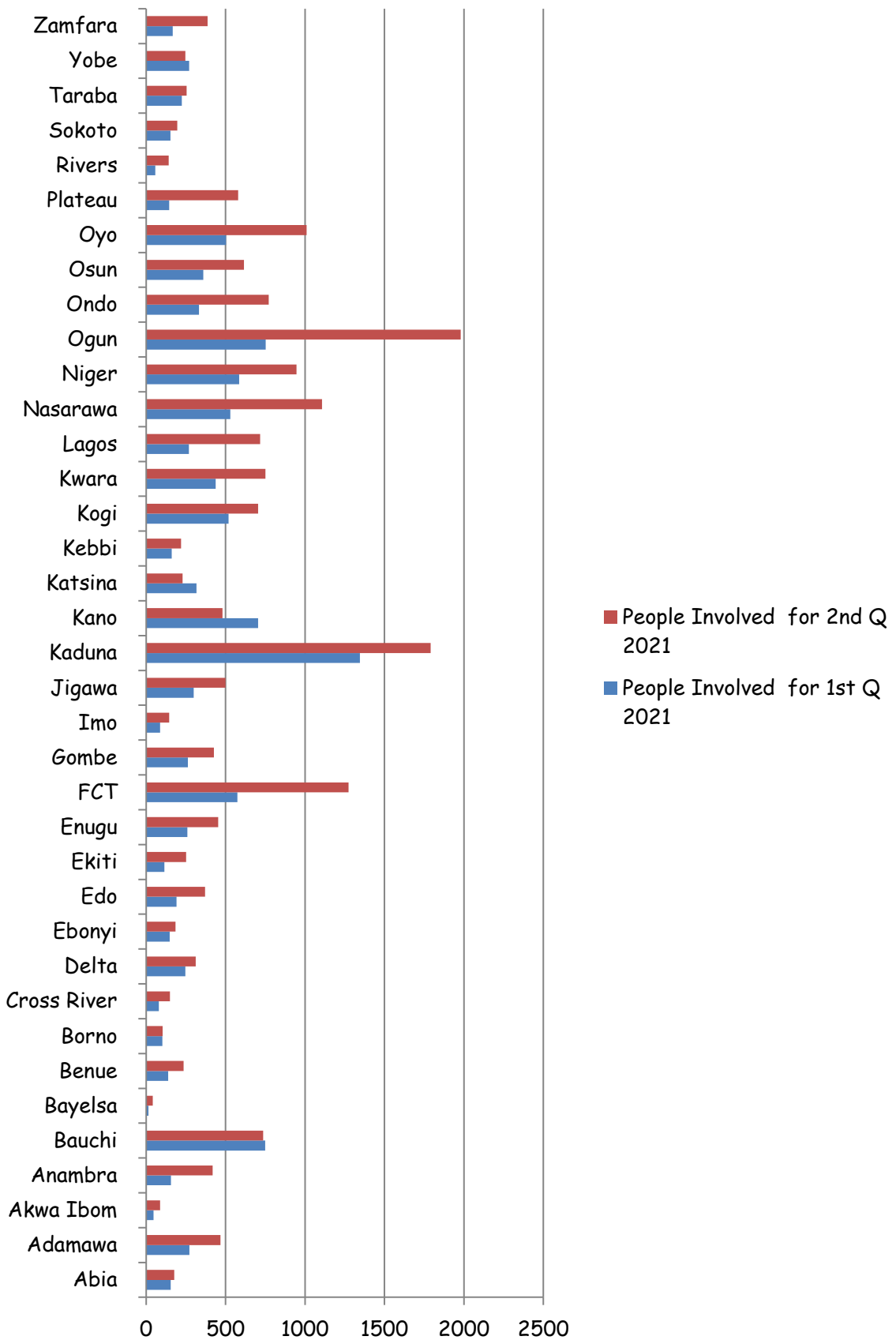


Table 27: People Involved on State Basis

STATE	People Involved for 1 st Q 2021	People Involved for 2 nd Q 2021
Abia	154	177
Adamawa	272	468
Akwa Ibom	47	87
Anambra	156	418
Bauchi	749	737
Bayelsa	15	42
Benue	138	236
Borno	102	103
Cross River	80	149
Delta	247	311
Ebonyi	148	185
Edo	191	370
Ekiti	114	252
Enugu	259	453
FCT	574	1273
Gombe	263	427
Imo	88	145
Jigawa	299	499
Kaduna	1345	1790
Kano	704	480
Katsina	316	229
Kebbi	160	220
Kogi	519	705
Kwara	438	750
Lagos	269	717
Nasarawa	529	1106
Niger	585	946
Ogun	752	1980
Ondo	333	772
Osun	360	615
Oyo	502	1009
Plateau	145	579
Rivers	58	142
Sokoto	152	196
Taraba	225	254
Yobe	270	247
Zamfara	167	386
TOTAL	11725	19455

Chart 17: People Involved on State Basis



Special Duties and External Relations

Table 28: Partnership Analysis of Government Agencies and NGO

ZONES	COMMAND	GOVT AGENCIES	NGOs	CORPORATE ORGs	TOTAL
RSHQ ABUJA	RSHQ ABUJA	42	103	16	161
RS 1 KADUNA	RS1.1 KADUNA	14	8	8	30
	RS1.2 KANO	15	1	6	22
	RS1.3 KATSINA	4	1	15	20
	RS1.4 JIGAWA	22	6	3	31
RS 2 LAGOS	RS2.1 LAGOS	6	2	17	25
	RS2.2 OGUN	24	0	40	64
RS 3 YOLA	RS3.1 ADAMAWA	64	3	6	73
	RS3.2 GOMBE	21	0	7	28
	RS3.3 TARABA	9	0	5	14
RS 4 JOS	RS4.1 PLATEAU	12	0	14	26
	RS4.2 BENUE	17	1	5	23
	RS4.3 NASSARAWA	10	0	4	14
RS 5 BENIN	RS5.1 EDO	10	0	11	21
	RS5.2 DELTA	11	0	0	11
	RS5.3 ANAMBRA	7	0	68	75
RS 6 P/H	RS6.1 RIVER	21	3	14	38
	RS6.2 C/RIVER	3	0	7	10
	RS6.3 A/IBOM	11	1	7	19
	RS6.4 BAYELSA	22	4	0	26
RS 7 ABUJA	RS7.1 FCT	14	6	11	31
	RS7.2 NIGER	1	10	10	21
RS 8 ILORIN	RS8.1 KWARA	3	1	8	12
	RS8.2 EKITI	25	4	7	36
	RS8.3 KOGI	13	18	5	36
RS 9 ENUGU	RS9.1 ENUGU	0	0	0	0
	RS9.2 EBONYI	5	0	3	8
	RS9.3 ABIA	7	0	6	13
	RS9.4 IMO	11	0	11	22
RS 10 SOKOTO	RS10.1 SOKOTO	2	2	0	4
	RS10.2 KEBBI	11	3	3	17
	RS10.3 ZAMFARA	65	8	14	87
RS 11 OSOGBO	RS11.1 OSUN	6	1	4	11
	RS11.2 ONDO	8	1	8	17
	RS11.3 OYO	6	0	47	53
RS 12 BAUCHI	RS12.1 BAUCHI	5	0	3	8
	RS12.2 BORNO	11	0	8	19
	RS12.3 YOBE	0	0	0	-
TOTAL		576	187	401	1172



Chart 18: Partnership Analysis of Government Agencies and NGO

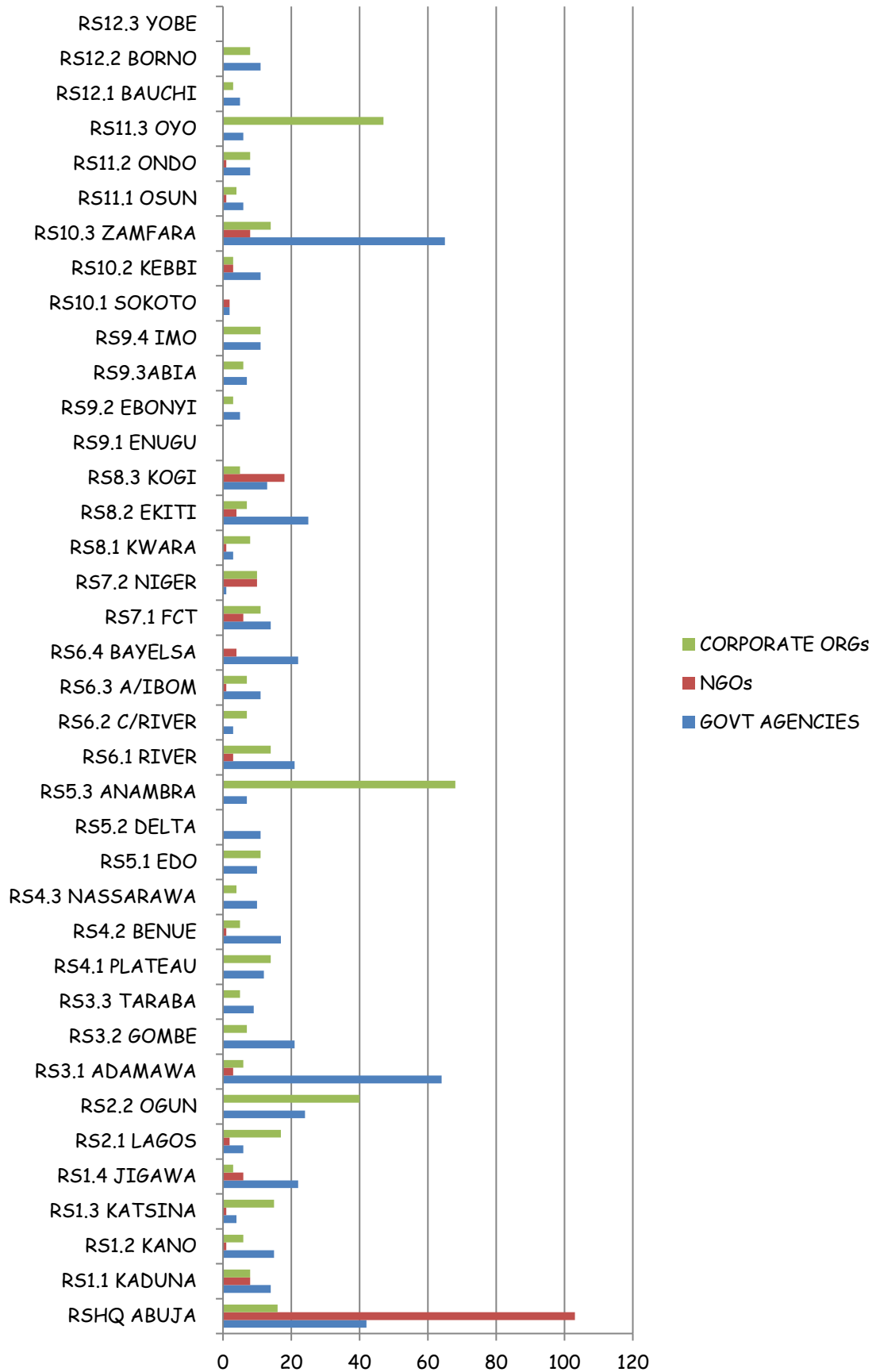
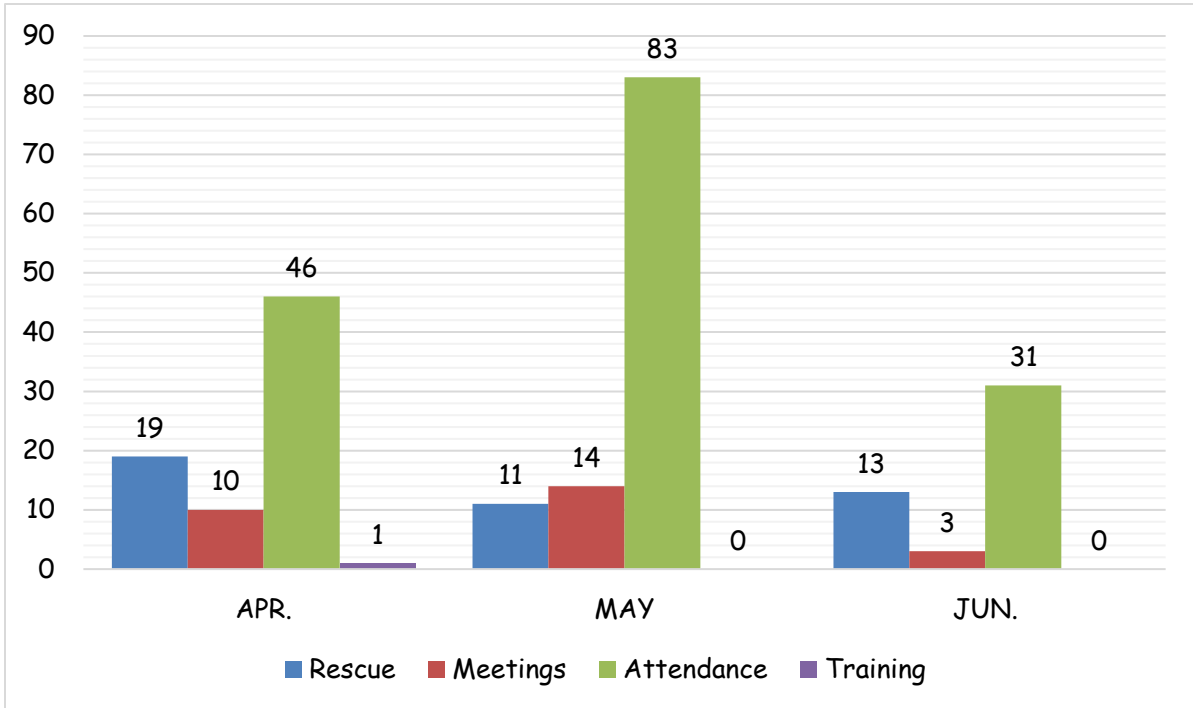


Table 29: Summary Of Activities Of National Community Post Crash Care Initiative (NCPCCI) by Volunteers For Second Quarter 2021

Months	No. of Rescue Carried Out	No. Death	No. Injured	Meetings (Max 27)	Attendance (Max 540)	Training (Max 27)	Training Topic	Training Date
APR.	19	21	103	10	46	2	-Use of 112 & 122 Toll free lines.(RS1.19Kattari)	13/04/21
MAY	11	41	98	14	83	5		
JUN.	13	11	53	3	31	0	0	
TOTAL	43	73	254	27	160	1		0

Table 19: Activities of NCPCCI



Training

Table 30: NO OF STAFF ON SPONSORSHIP (LOCAL/FOREIGN)

S/N		NO OF STAFF ON SPONSORSHIP
1.	No of staff on sponsorship (Foreign)	0
2.	No of staff on self-sponsorship (Foreign)	0
3.	No of staff on sponsorship (Local)	14
TOTAL		14

Table 31: NUMBER OF SCHOOLS REGISTERED

S/N	MONTH	NUMBER OF SCHOOLS
1.	April	8
2.	May	12
3.	June	7
TOTAL = 27		

Table 32: NUMBER OF STAFF TRAINED VIRTUALLY (LOCAL/FOREIGN)

S/N	MONTHS	NUMBER OF ENROLL TRAINEE
1	No. of Staff trained via Virtual and Physical Workshop	100
TOTAL =		100

Table 33: No. of Drivers of Federal Character Commission Trained By FRSC

S/N	ORGANIZATION	NUMBER OF DRIVERS TRAINED
1.	Office of the SGF	25
TOTAL		25

TABLE 34: NUMBER OF STAFF GIVEN APPROVAL FOR FURTHER STUDIES

S/N	PROGRAMME	TOTAL
1	Final approval given for further studies in NCE, ND, HND, Degree and Masters Degree (Officers and Marshal) for 2020/2021 Academy session. (11 Officers and 52 Marshals)	63
TOTAL		63



TABLE 35: GRADUATED TRAINEES FROM DRIVING SCHOOLS

S/N	MONTHS	NUMBER OF GRADUATED TRAINEE
1	April	55648
2.	May	58197
3.	June	49427
TOTAL = 163272		

SUMMARY

No of Staff on Sponsorship (local/Foreign).....	14
No of Staff Trained on Virtual (Local/Foreign).....	215
No of Staff given final approval for Further Studies	0
No of Driving School Registered.....	27
No of Driving School Accredited	10
No of Trainee drivers enrolled	167,390
No of Trainee drivers Graduated.....	163,270
No of Riders/Drivers Trained By FRSC	25
No of Drivers Trained By Field Command.....	102

Table 36: Schools Activities

S/NO	Month	Number of School registered	Number of Schools Accredited	Number of Enrolled Trainees	of Graduated Trainees
1	October	10	41	56730	56778
2	November	11	0	37580	37888
3	December	7	0	53849	31453
	Total	28	41	185,512	0

SUMMARY

No of Staff on Sponsorship (local/Foreign).....	16
No of Staff Trained on Virtual (Local/Foreign).....	100
No of Staff given final approval for Further Studies	63
No of Driving School Registered.....	28
No of Driving School Accredited	41
No of Trainee drivers enrolled	148159
No of Trainee drivers Graduated.....	126119
No of Riders/Drivers Trained By FRSC	21
No of Drivers Trained By Field Command.....	0

TECHNICAL SERVICES DEPARTMENT

Table 37: Number of FRSC Vehicles

Purpose	Field	RSHQ	Total
Patrol	766	41	807
Admin	68	116	184
Ambulances	111	15	126
Tow Trucks	29	1	30
Total	974	173	1147

Table 38: Summary of FRSC Bikes

BIKES	FIELD CMDs	RSHQ	TOTAL
TOTAL	205	48	253

FRSC ESTATES

Number of staff quarters owned - 42

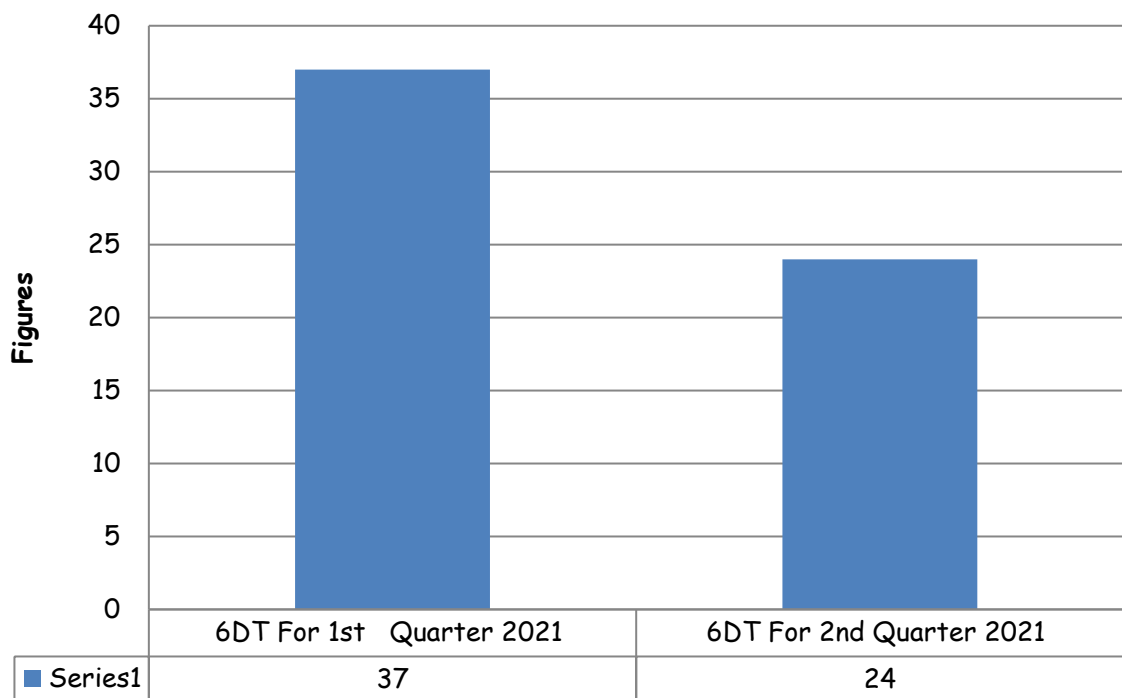
Number of staff quarters rented - 109

Total number of staff quarters - 151

Table 41: Six Death (6DT) Accident Investigated

6DT For 1 st Quarter 2021	6DT For 2nd Quarter 2021
37	24

Chart 20: 6DT Accident Investigated For 1st Q 2019 and 1st Q 2020





Federal Road Safety Corps, Nigeria:
ISO 9001 QMS Certified Law Enforcement Agency in Africa.

08056294007 SERVICOM Nodal Officer

122 - TOLL FREE

08056799857 - Complaint Desk

FRSC WEBSITE : www.frsc.gov.ng

E-mail: info@frsc.gov.ng

Twitter handle: [@FRSCNigeria](https://twitter.com/FRSCNigeria)