



Zonal Command's Assessment First Quarter 2013

By

BO Oyeyemi MFR mni
Deputy Corps Marshal
(Operations),
Federal Road Safety
Commission

To

**COMMANDING OFFICERS
RETREAT**

JUNE 2013





Overview

S/N	Item	Slide nos.
01	Introduction	3
02	Criteria for Assessment	4
03	Overall performance	5
04	1 st Quarter 2013 Zonal Command assessment	6
05	Chart showing 1 st Q 2013 overall outcome	7
06	Table showing comparison of positions: 4 th Q 2012 and 1 st Q 2013	8
07	Chart showing comparison of 4 th Q and 1 st Q Marks	9
08	Table showing comparative analysis of 1 st Q 2012 and 1 st Q 2013	10
09	Chart showing Comparison of 1 st Q 2012 and 1 st Q 2013 Marks	11
10	Analysis of Zonal Command assessment (1 st Q2010-2013)	12
11	Chart showing comparative average of zonal command assessment (1 st Q 2010-2013)	13
12	Observation	14-16
13	Conclusion	16
14	Next step	17
15	Recommendations	18
16	Future outlook	19
17	Thank you	20



Introduction

- This presentation is about the assessment of commands performance in the 1Q of 2013
- Also, seeks to compare 4Q 2012 and 1Q 2013
- Attempts were made to compare 1Q of 2010-2013
- The aim is to keep track of command's performance with a view to achieving the Corps 2013 strategic goals



CRITERIA FOR ASSESSMENT

In carrying out the assessment, the following parameters and scores were used:

PARAMETERS	SCORES OBTAINABLE
Report Rendition	20 marks
Planning and Monitoring	30 marks
Alignment to Service Standard	10 marks
Capacity Building	15 marks
Collaboration and Teamwork	15 marks
Resource Management	<u>10 marks</u>
Total	100 marks



1Q 2013 ZONAL COMMAND ASSESSMENT

Table 1: **TABLE SHOWING SUMMARY OF OVERALL PERFORMANCE**

CMD	Reports Rendition (20%)	planning & Monitoring (30%)	Alignment to service standard (10%)	Capacity Building (15%)	Collaboration & Team Work (15%)	Financial Resource Mgt (10%)	Total (100)	Position
(a)	(b)	(c)	(d)	(e)	(f)	(g)	(h)	(i)
RS1	18.1	17	0	11	6	5	57.1	4TH
RS2	18.6	21	5	14.2	11	10	79.8	1ST
RS3	16.6	12	1	8.7	5	1	44.3	8TH
RS4	17.1	6	2	8.5	7	4	44.6	7TH
RS5	18.1	15	5	12.5	10	6	66.6	3RD
RS6	17.1	6	0	9.2	0	1	33.3	12TH
RS7	17.6	22	6	12.7	7	5	70.3	2ND
RS8	19.1	14	3	9.5	10	0	55.6	6TH
RS9	17.6	8	0	8.7	3	2	39.3	11TH
RS10	16.6	9	2	7.9	5	1	41.5	9TH
RS11	19.1	14	6	8.7	7	1	55.8	5TH
RS12	16.6	6	1	8.7	3	5	40.3	10TH



Chart 1: Chart showing 1Q 2013 Overall Outcome

1Q 2013 OVERALL OUTCOME

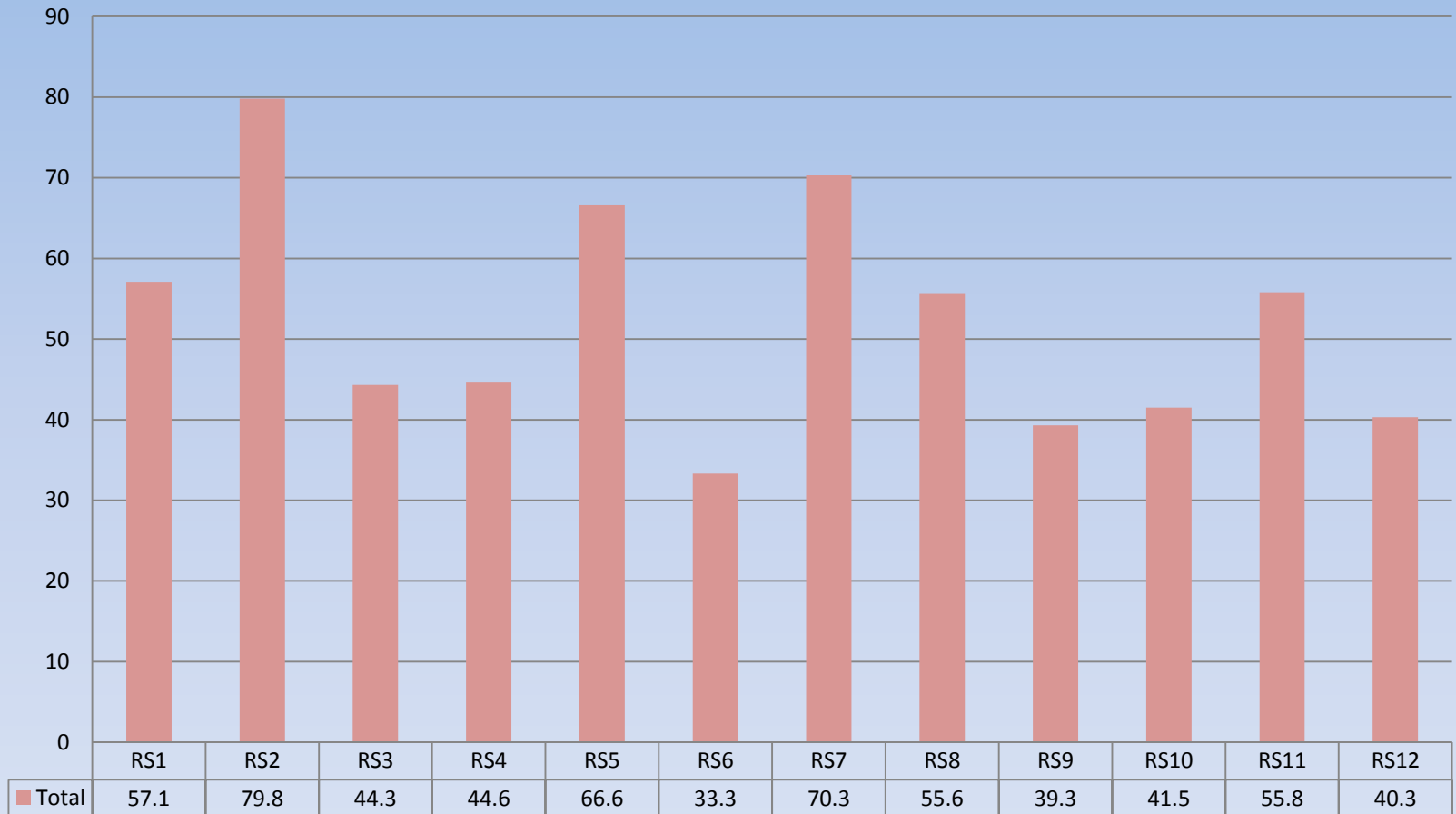




Table 2: TABLE SHOWING COMPARISON OF POSITIONS; 4TH Q 2012 AND 1ST Q 2013

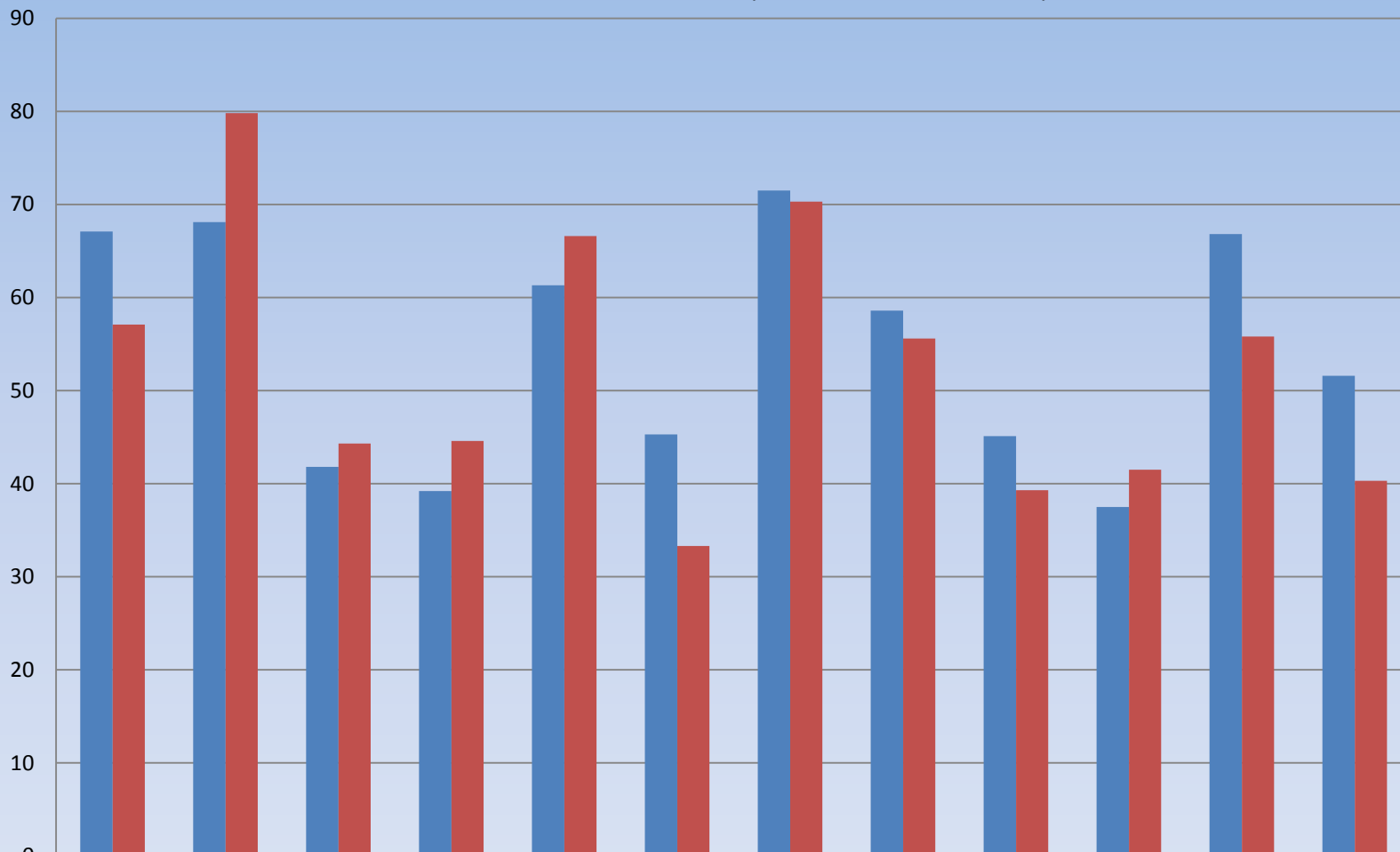
COMPARISON OF POSITIONS: 4TH Q 2012 AND 1ST Q 2013

CMD	4Q 2012	Position	1Q 2013	Position	Remarks
RS1	67.1	3RD	57.1	4TH	Slight Decline
RS2	68.1	2ND	79.8	1ST	Improved
RS3	41.8	10TH	44.3	8TH	Improved
RS4	39.2	11TH	44.6	7TH	Improved
RS5	61.3	5TH	66.6	3RD	Improved
RS6	45.3	8TH	33.3	12TH	Decline
RS7	71.5	1ST	70.3	2ND	Slight Decline
RS8	58.6	6TH	55.6	6TH	Consistent
RS9	45.1	9TH	39.3	11TH	Decline
RS10	37.5	12TH	41.5	9TH	Improved
RS11	66.8	4TH	55.8	5TH	Slight Decline
RS12	51.6	7TH	40.3	10TH	Decline



Chart 2: Chart showing comparison of 4Q 2012 and 1Q 2013 marks

COMPARISON OF 4Q 2012 AN 1Q 2013 MARKS



	RS1	RS2	RS3	RS4	RS5	RS6	RS7	RS8	RS9	RS10	RS11	RS12
4Q 2012	67.1	68.1	41.8	39.2	61.3	45.3	71.5	58.6	45.1	37.5	66.8	51.6
1Q 2013	57.1	79.8	44.3	44.6	66.6	33.3	70.3	55.6	39.3	41.5	55.8	40.3



Table 3: TABLE SHOWING COMPARATIVE ANALYSIS OF 1ST Q 2012 AND 1ST Q 2013

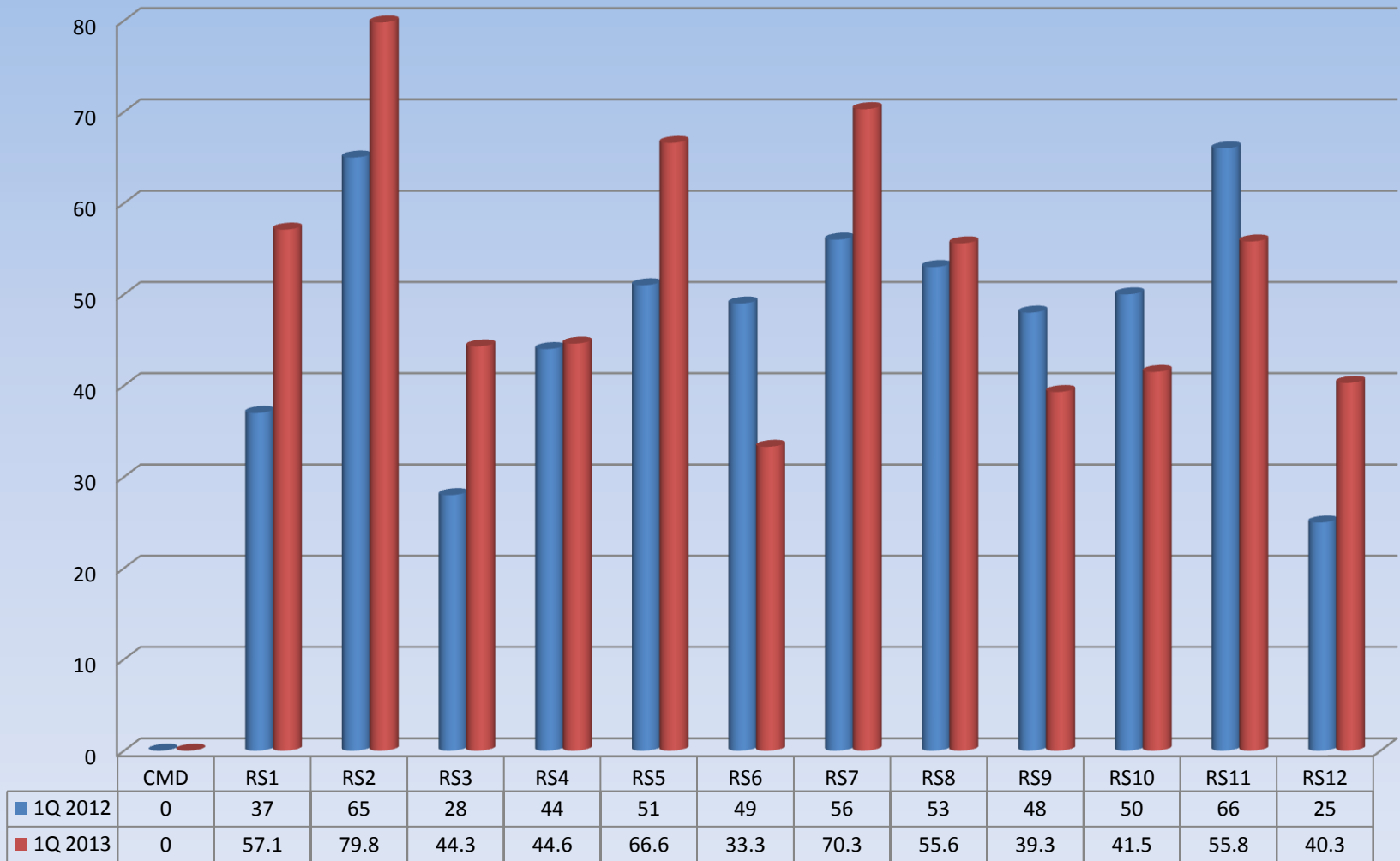
COMPARATIVE ANALYSIS OF 1ST Q 2012 AND 1ST Q 2013

CMD	1Q 2012 Marks	Position	1Q 2013 Marks	Position	Remarks
RS1	37	10TH	57.1	4TH	Greatly Improved
RS2	65	2ND	79.8	1ST	Improved
RS3	28	11TH	44.3	8TH	Improved
RS4	44	9TH	44.6	7TH	Improved
RS5	51	5TH	66.6	3RD	Improved
RS6	49	7TH	33.3	12TH	Decline
RS7	56	3RD	70.3	2ND	Improved
RS8	53	4TH	55.6	6TH	Slightly Improved
RS9	48	8TH	39.3	11TH	Decline
RS10	50	6TH	41.5	9TH	Decline
RS11	66	1ST	55.8	5TH	Greatly Improved
RS12	25	12TH	40.3	10TH	Improved



Chart 3: Chart showing comparison of 1Q 2012 and 1Q 2013 Marks

COMPARISON OF 1Q 2012 AND 1Q 2013 MARKS





OVERALL PERFORMANCE

The overall performance of Zonal commands in 1Q year 2013 with respect to positions is presented as follows:

- RS2 Lagos: 79.8% 1st Position
- RS7 Abuja: 70.3% 2nd Position
- RS5 Benin: 66.6% 3rd Position



Table 4: ANALYSIS OF ZONAL COMMAND ASSESSMENT (1Q 2010-1Q 2013)

ANALYSIS OF ZONAL COMMAND ASSESSMENT (1Q 2010-2013)

Years	2010	2011	2012	2013
CMD	1Q	1Q	1Q	1Q
RS1	37	54.67	37	57.1
RS2	56.5	55.5	65	79.8
RS3	40.5	37.17	28	44.3
RS4	45	50.5	44	44.6
RS5	51	57.67	51	66.6
RS6	42.5	43.83	49	33.3
RS7	41.5	63.5	56	70.3
RS8	58	69.17	53	55.6
RS9	45	50.83	48	39.3
RS10	43	48.5	50	41.5
RS11	46	75.67	66	55.8
RS12	40.5	41.5	25	40.3
Total	546.5	648.51	572	628.5
Average	45.54	54.04	47.67	52.38



Chart 4: Chart showing Comparative Average of Zonal Command Assessment (1Q2010-1Q 2013)

Chart Showing Comparative Average of Zonal Command Assessment (1Q 2010 - 2013)



	2010	2011	2012	2013
Average	45.54	54.04	47.67	52.38



OBSERVATIONS

- **Comparative analysis for 1st Q 2012 and 1st Q 2013**
 - Zone RS1, RS2, RS3, RS4, RS5, RS7, RS8 and RS12 have recorded improvement in their activities whereas RS1 shows tremendous improvement with 20.1 marks
 - While Zone RS6, RS9, RS10 and RS11 recorded a decline, RS6 shows remarkable decline with 15.7 marks
- **In the 1st Q 2013 assessment**
 - Zones RS3, RS4, RS6, RS9, RS10, RS11 and RS12 performed below average while Zone RS1 and RS11 performed slightly above average and Zone RS2, RS5, RS7 performed well above average



•Comparative analysis of 4th Q 2012 and 1st Q 2013

- Zone RS2, shows a significant improvement with 11.7 marks
- Zone RS1, RS11 and RS12 show decline with 10, 11 and 11.3 marks respectively
- RS6 shows a significant decline with 12 marks



CONCLUSION

- In the comparative analysis of 1ST Q 2012 and 1ST Q 2013, most commands recorded significant improvement
- However, a decline in the overall performance of seven (7) out of the twelve (12) Zonal commands was revealed in the comparative analysis of 4TH Q 2012 and 1ST Q 2013



**next
steps**



RECOMMENDATION

- Zone RS2 has shown unrelenting effort towards improvement and should maintain the tempo
- Zone RS6 has remarkably indicated decline and should make efforts to regain its lost glory
- The average performance is not impressive therefore commands should make efforts to improve their activities



FUTURE OUTLOOK

- The reduced capacity in the insurgency is expected to improve security situation and operations by extension
- The injection of additional operational inputs is expected to boost output
- The 2013 promotion exercise is expected to enhance performance
- Special operations (such as 'operation shield') and new innovations introduced by many commands are expected to stimulate improvements in the subsequent quarters.

THANK YOU

Phone Only



**Call toll free on: 122
0700 - CALL - FRSC
0700 - 2255 - 3772**

SMS Only



080 7769 0362

www.frsc.gov.ng