

4th QUARTER ASSESSMENT OF RSHQ DEPTS/COS BY THE CMO

MONTH/YEAR: OCT - DEC 2011

DEPTS/COS	REPORTING	PLANNING / MONITORING	ALIGNED SERVICE STANDARDS	CAPACITY BUILDING	TEAM WORK & COLLABORATION	FINANCIAL & RESOURCE MGT.	TOTAL	POSITION
OPS	20	18	14	10	3	15	80	1 ST
SMP	20	18	14.5	10	3	15	79.5	2 ND
CTSO	20	16	14.5	10	6	15	79	3 RD
CPRO	20	16	14	10	3	15	76	4 TH
CA	20	8	14	10	2	15	69	5 TH
MVA	16	10	12	10	3	15	66	6 TH
CMRS	18	8	13.5	5	5	15	64.5	7 TH
CLOG	13	12	14.5	6	1	10	61.5	8 TH
SED	19	12	14.5	6	6	0	57.5	9 TH
PRS	7	4	13	7	0	15	56	10 TH
CS	19	10	14	4	4	0	51	11 TH
F&A	18	14	14	0	4	0	50	12 TH
CPEO	20	10	13.5	0	5	0	48.5	13 TH
CP	18	8	15	5	2	0	48	14 TH
CPL	19	10	14	2	2	0	47	15 TH
AHR	17	12	14.5	2	0	0	43.5	16 TH
CIO	20	10	12	0	2	0	42	17 TH
TSC	14	12	13	0	1	0	40	18 TH
BUD	12	4	12	1	2	0	31	19 TH
CLA	4	8	14	0	3	0	29	20 TH

KEY

GREEN	EXCELLENT	80 - 100
BLUE-	VERY GOOD	70 - 79
ORANGE-	GOOD	60 - 69
YELLOW	- FAIR	50 - 59
RED -	FAIL	0 - 49

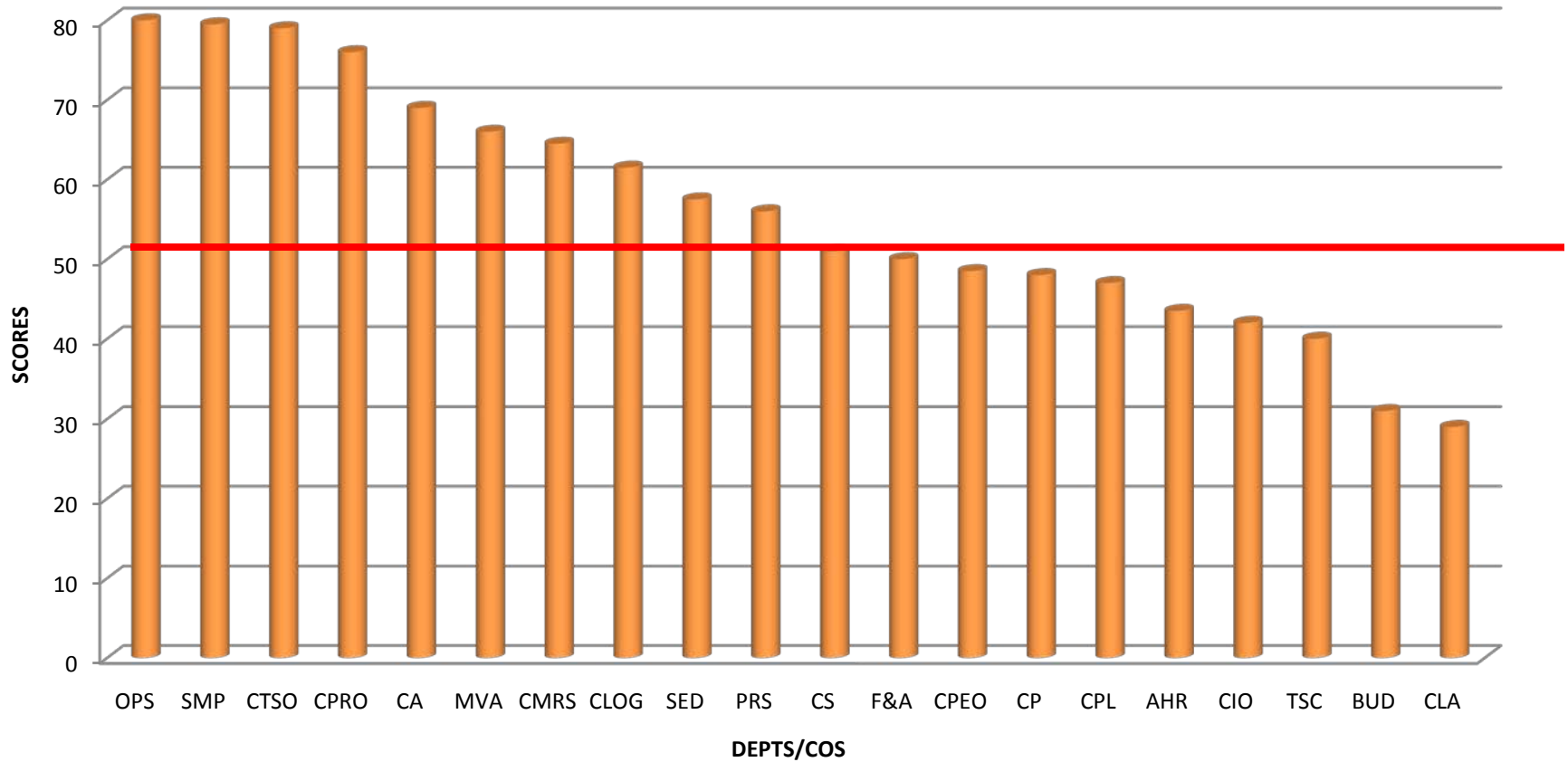
Above 50% Score - 60%

4th QUARTER ASSESSMENT OF RSHQ DEPTS/COS BY THE CMO

MONTH/YEAR: OCT - DEC 2011



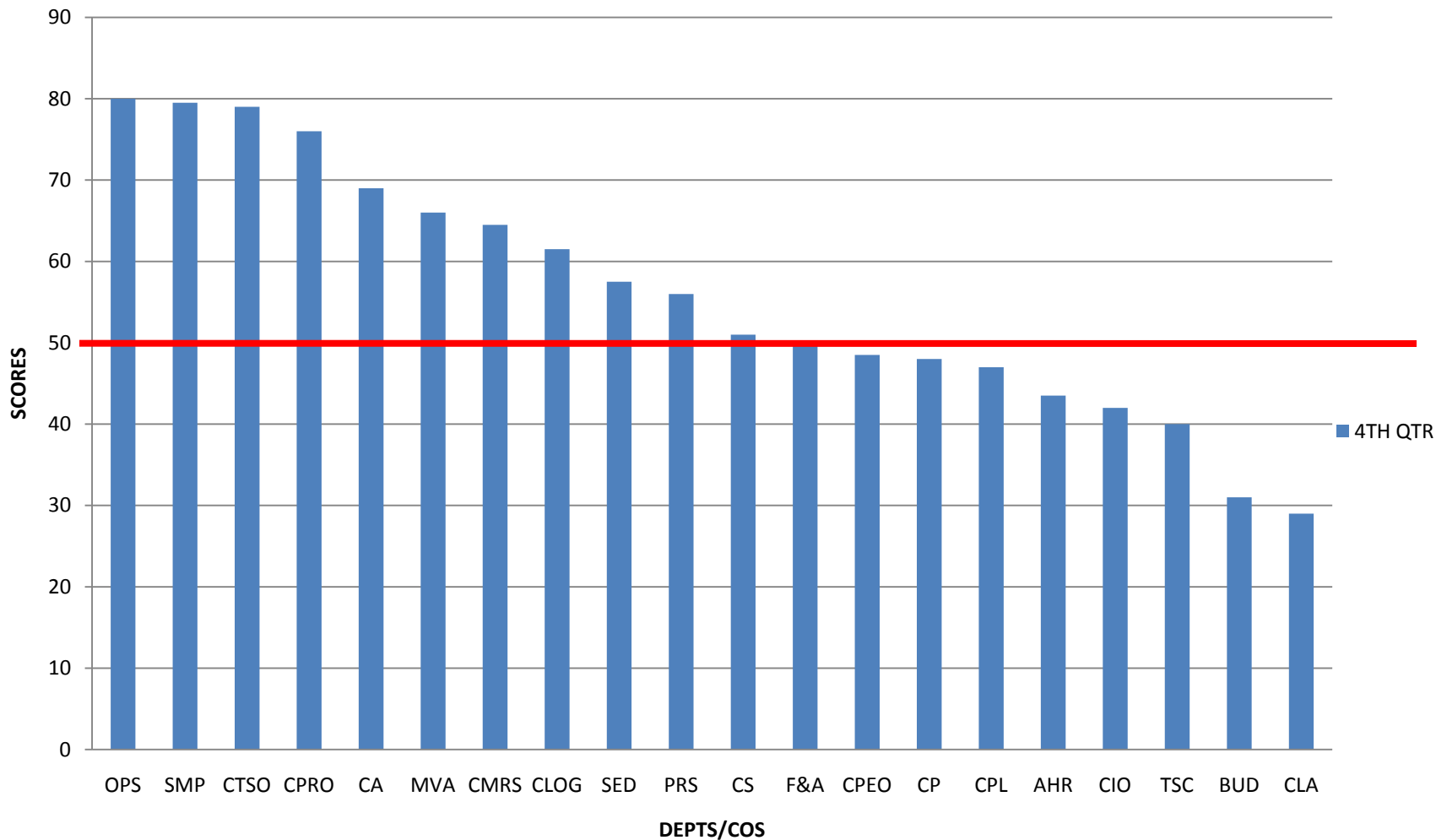
Chart Title



Above 50% Score - 60%

4th QUARTER ASSESSMENT OF RSHQ DEPTS/COS BY THE CMO
MONTH/YEAR: OCT - DEC 2011

RESTRICTED



Above 50% Score - 60%

RESTRICTED