

1ST QUARTER ASSESSMENT OF RSHQ DEPTS/COS BY THE CMO

MONTH/YEAR: JAN - MAR 2011

DEPTS/COS	REPORTING 20%	Planning & Monitoring 32%	Aligned service standards 18%	Capacity building 10%	Team work & Collaboration 5%	Financial & Resources Mgt. 15%	TOTAL	Position
OPS	20	20	15.5	7	3	15	80.5	1 st
CPRO	20	8	16	10	2	15	71	2 nd
CP	20	20	14.8	7	3	0	64.8	3 rd
CA	20	8	15.5	10	0	10	63.5	4 th
CMRS	20	22	15.5	3	3	0	63.5	4 th
TSC	18	18	15.3	10	2	0	63.3	6 th
MVA	17	16	14.9	0	0	15	62.9	7 th
CTSO	15	26	13.3	2	6	0	62.3	8 th
CIO	15	22	14.2	6	4	0	61.2	9 th
CPEO	16	22	16	3	3	0	60	10 th
CLOG	19	22	16.2	0	2	0	59.2	11 th
CS	20	16	15.1	6	2	0	59.1	12 th
CPL	20	16	15.1	3	3	0	57.1	13 th
AHR	20	16	13.6	4	2	0	55.6	14 th
SED	18	16	13.5	5	3	0	55.5	15 th
SMP	20	18	14.4	0	2	0	54.4	16 th
F&A	18	18	16.2	0	2	0	54.2	17 th
CLA	14	18	15.8	3	3	0	53.8	18 th
BUD	16	10	13.9	3	2	0	44.9	19 th
PRS	11	4	15.3	8	1	0	39.3	20 th

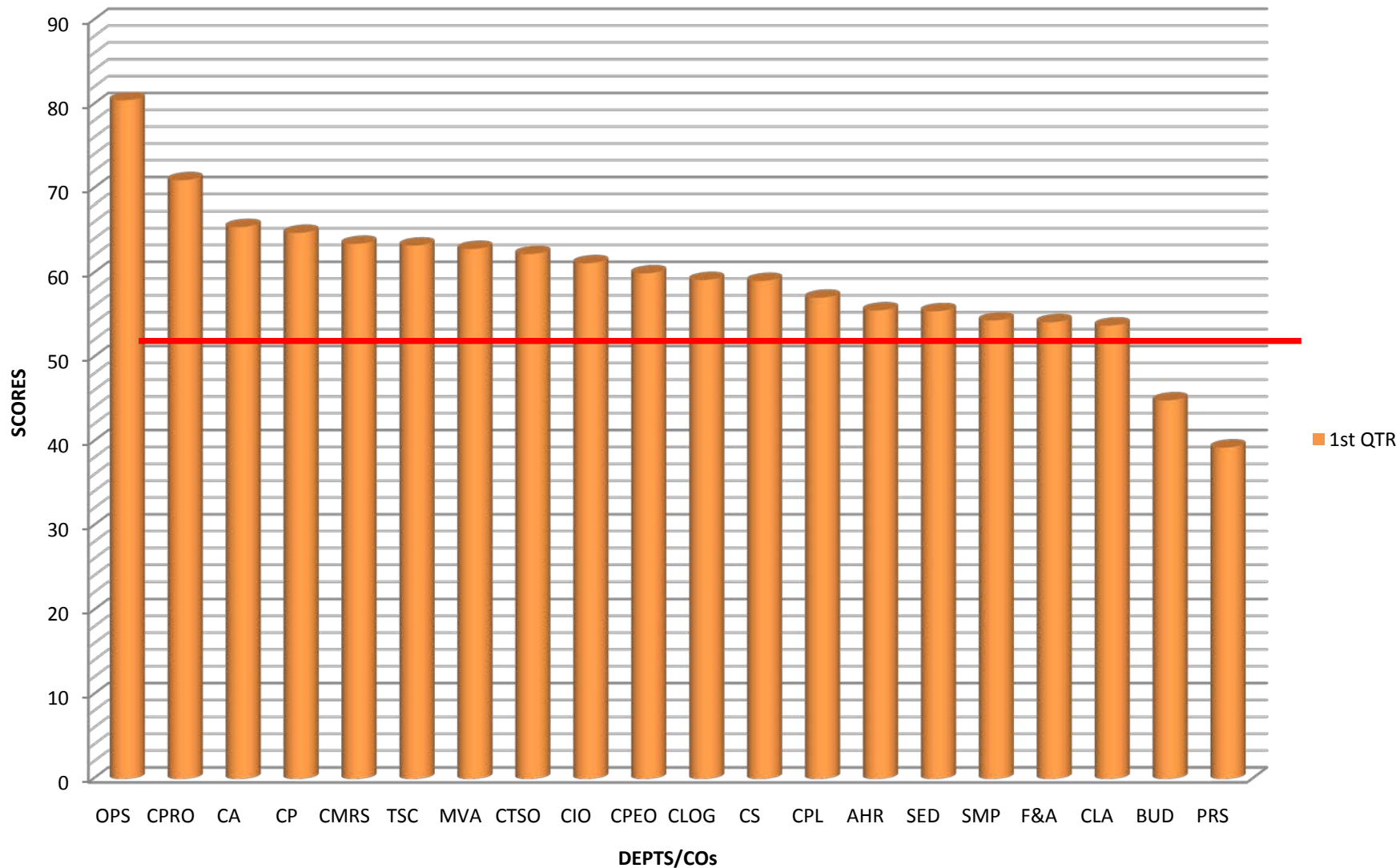
KEY

GREEN	EXCELLENT	80 - 100
BLUE-	VERY GOOD	70 - 79
ORANGE-	GOOD	60 - 69
YELLOW	- FAIR	50 - 59
RED -	FAIL	0 - 49

Above 50% Score - 90%

1ST QUARTER ASSESSMENT OF RSHQ DEPTS/COS BY THE CMO

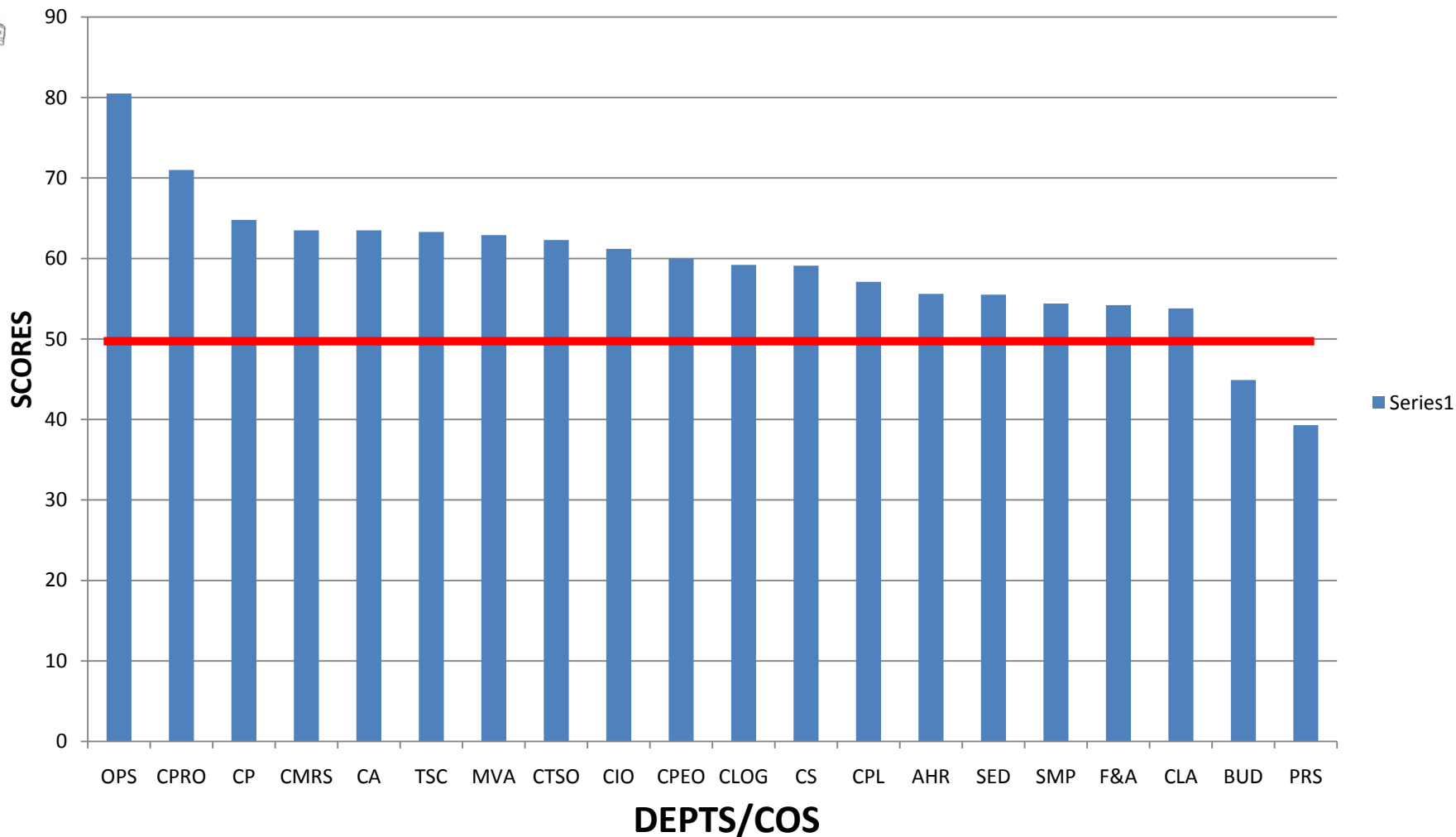
MONTH/YEAR: JAN - MAR 2011



Above 50% Score - 90%

1ST QUARTER ASSESSMENT OF RSHQ DEPTS/COS BY THE CMO

MONTH/YEAR: JAN - MAR 2011



Above 50% Score - 90%