

RECOGNIZING RELEVANCE OF THE IMPLEMENTATION OF THE ROAD TRANSPORT SAFETY STANDARDIZATION SCHEME TOWARDS ROAD TRAFFIC CRASH

THE ANNUAL SAFETY MANAGERS' RETREAT



A presentation by:

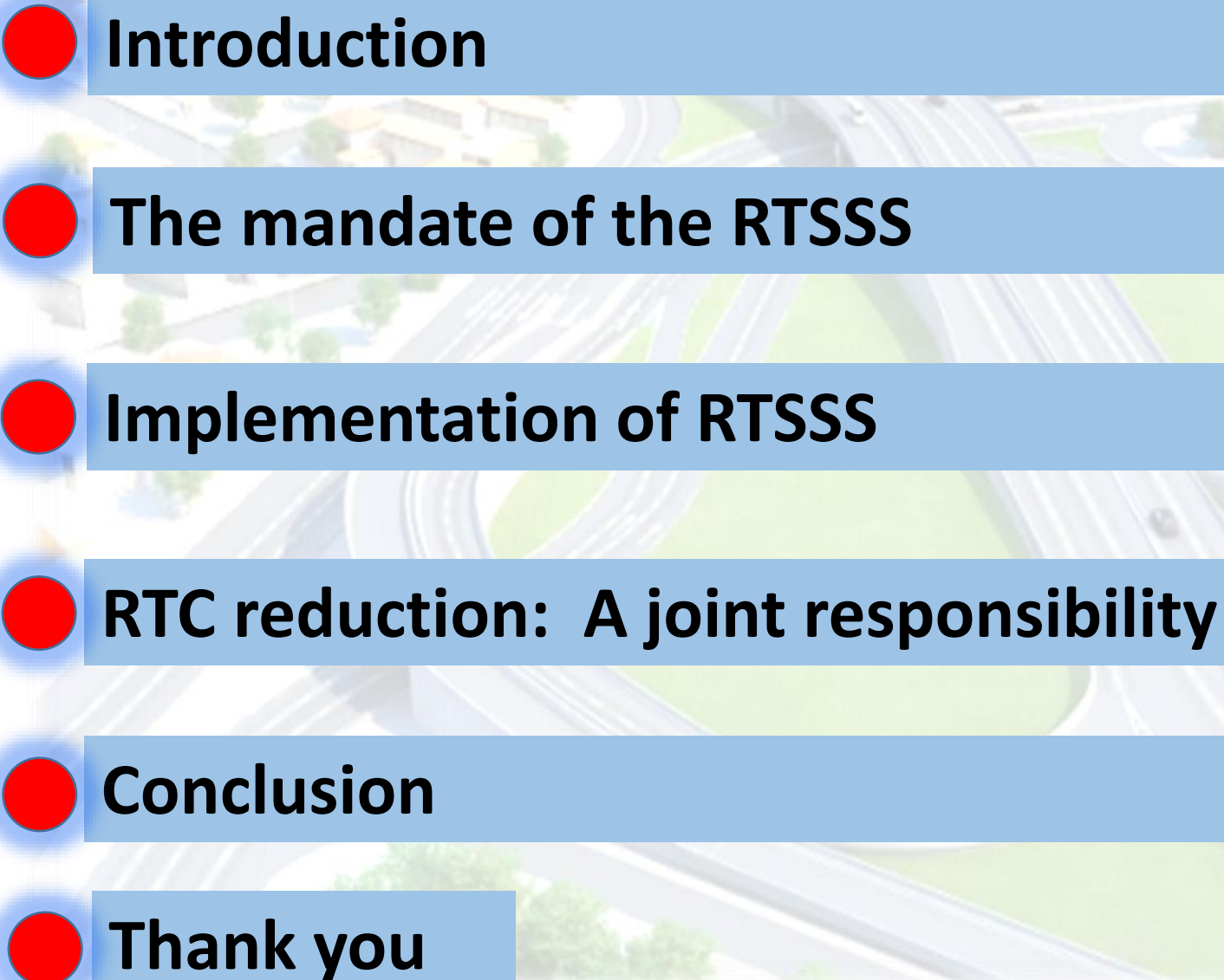
ACM KAYODE OLAGUNJU, Ph.D

**Head, Policy Research and Statistics
Department, FRSC HQ-Abuja.**

13 January, 2016

**VENUE: FEDERAL ROAD SAFETY CORPS
NATIONAL HEADQUARTERS,
WUSE ZONE 3, ABUJA**

OUTLINE

- 
- **Introduction**
 - **The mandate of the RTSSS**
 - **Implementation of RTSSS**
 - **RTC reduction: A joint responsibility**
 - **Conclusion**
 - **Thank you**

INTRODUCTION

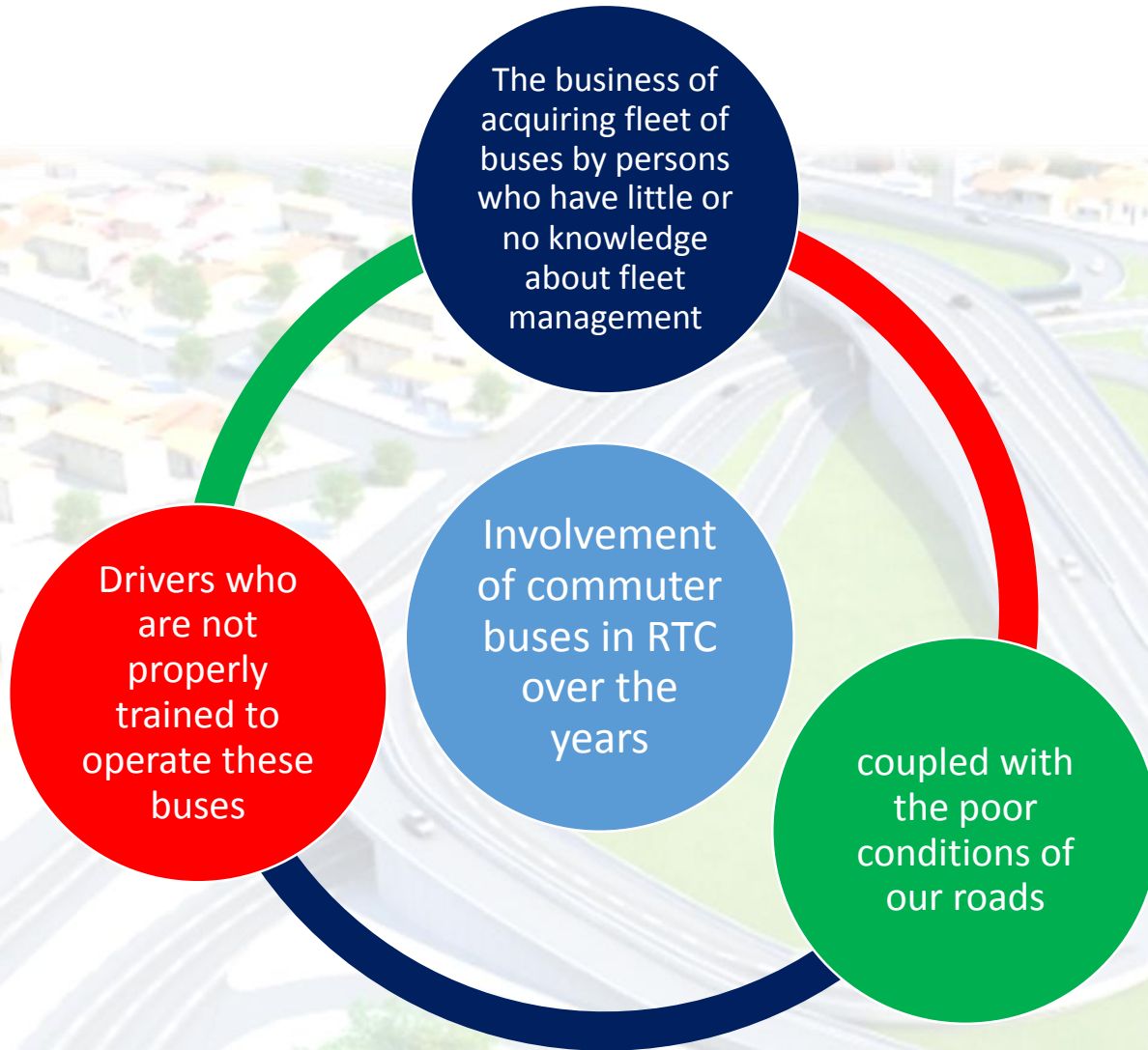
The Road Transport system in Nigeria accounts for over 75% of mobility needs across the country with fleet operators contributing over 60% of this figure.



Less attention was given to its regulations until recently

This neglect resulted in unpleasant consequences such as involvement in Road Traffic Crashes

INTRODUCTION...ii

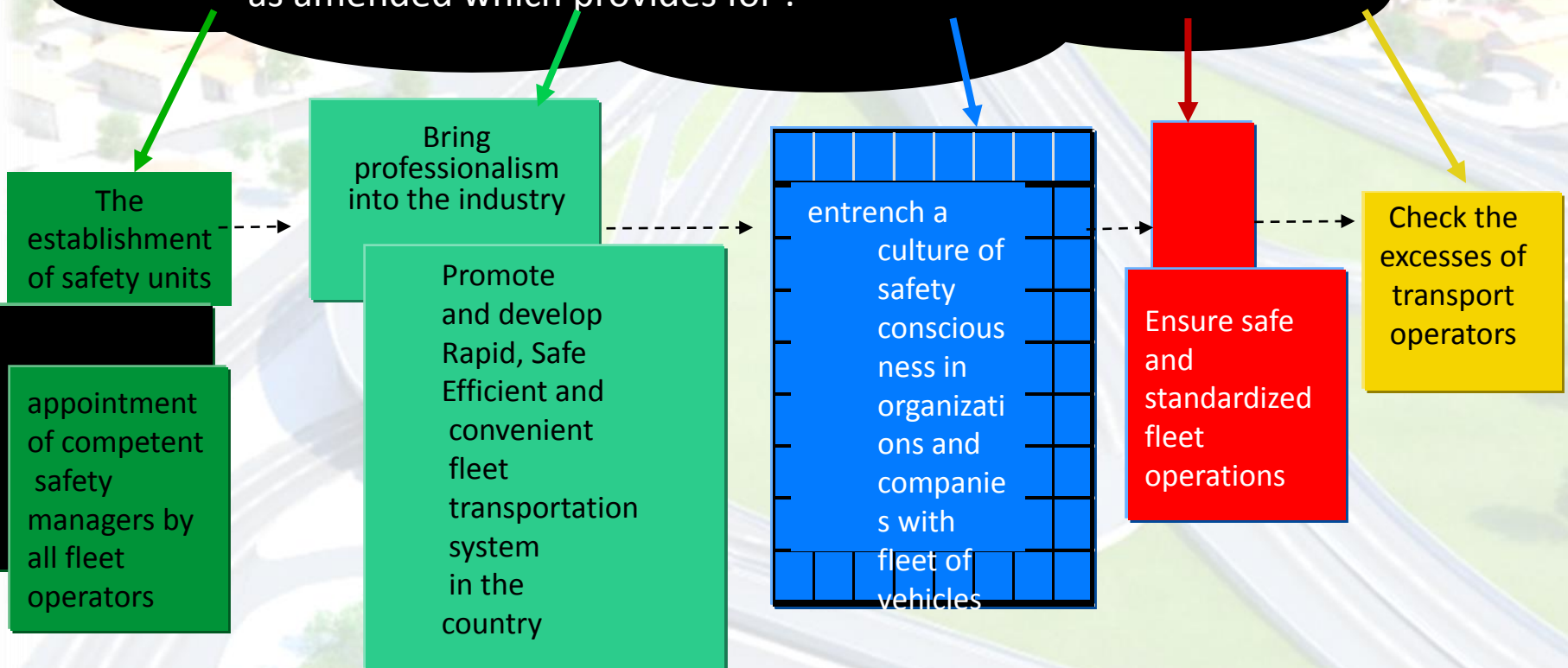


It is against this backdrop and in line with international best practices that FRSC introduced RTSSS.

The policy stipulates minimum safety requirements for fleet operators (Organizations, companies, Road Transport Owners) with at least five (5) vehicles in their fleet.

The mandate of the RTSSS

RTSSS was created by Law in NRTR 2014 section 115 made in pursuant to sections 5 and 10(10) of the FRSC (Establishment) Act 2007 and section 158 of the NRTR 2012 as amended which provides for :



Implementation of RTSSS

For the effective implementation of the RTSSS, the scheme assigned specific roles as follows

1

The fleet operators are expected to:

Establish fully functioned safety units headed by qualified, competent and experienced Safety Manager

Provide standard terminus/registered office in locations that will not lead to traffic problems such as congestion

Put in place a standard recruitment policy as well as drivers certification programme for its drivers

Ensure non-engagement of drivers with more than one licence, suspended, removed, cancelled or disqualified from driving

Have an established policy on training and retraining of drivers

Operate a comprehensive vehicle maintenance policy

Write on their vehicles contact phone numbers, preferably those of the Safety Managers for feedback from the public especially on the behavior of their drivers

Maintain records on drivers, vehicles and road traffic crashes and submit same to relevant agencies

Provide recovery vehicles and well designed emergency evacuation plan

Implementation of RTSSS...Role of Fleet Operators

Entrench security plans, ensuring that all passengers and properties are safely handed over at the terminals and also along the route

Participate in fleet operators forum

Ensure that their operations meet their client's expectations and are within the standards required by the laws of the land

Implementation of RTSSS

For the effective implementation of the RTSSS, the scheme assigned specific roles as follows

2

The Safety Managers on the other hand are expected to ensure that

Risks arising from driving are recognized as an integral part of the organization safety policy

Ensure that the vehicles meet the minimum safety standard

They have the knowledge of the Nigerian Highway Code

They have knowledge of the National Road Traffic Regulation 2012

Must have knowledge of the basic crash investigation skills/techniques

Ensure enforcement of the maximum driving period, rest hours (8 hours rest within 24 hours per trip) and that no driver is engaged more than 24 hours

Implementation of RTSSS... Role of Safety Managers

Ensure periodic certification of drivers

Assess and determine crash prone routes periodically and develop defensive driving techniques to ensure safety

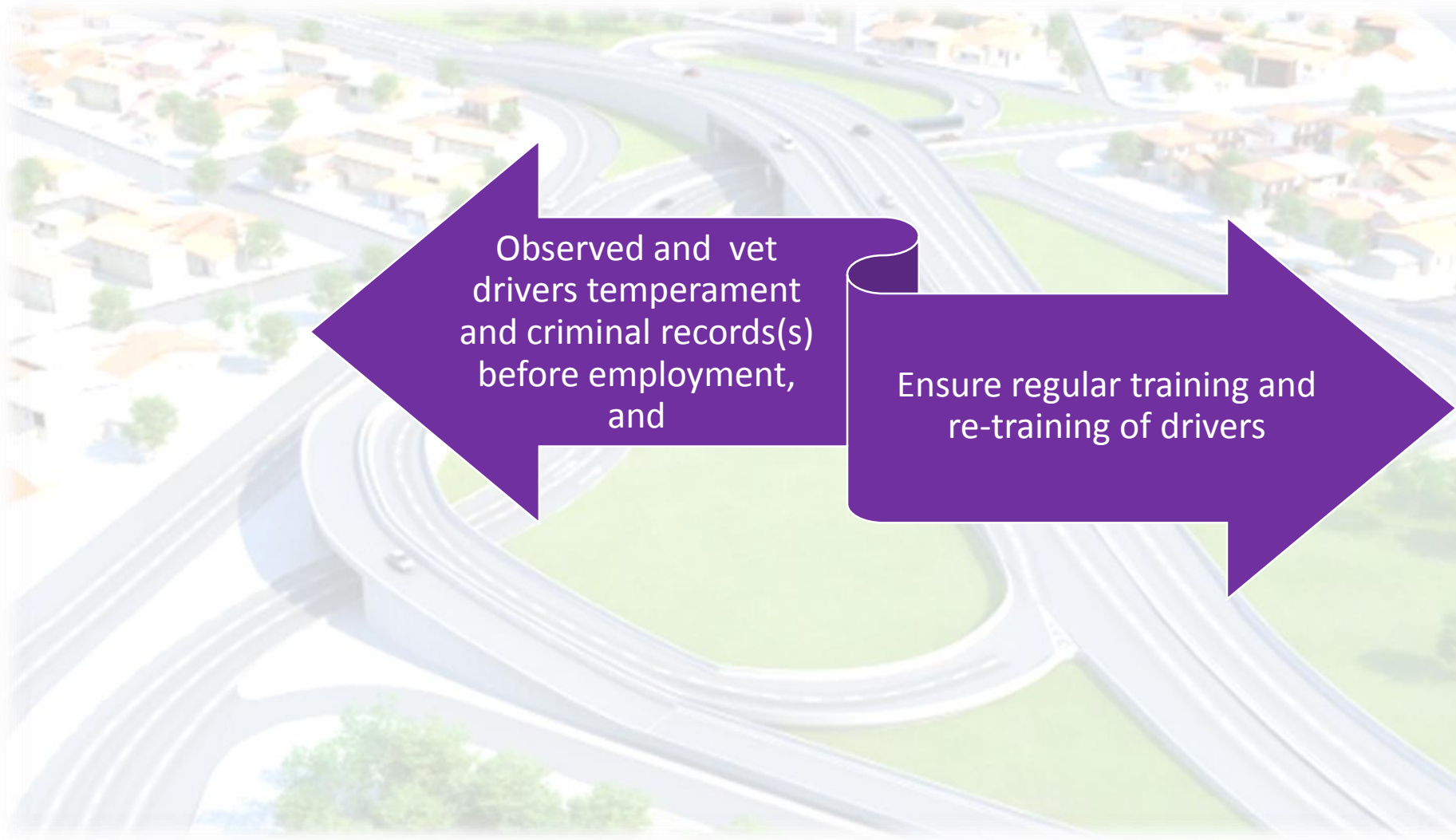
Maintain a log book for each drivers

Ensure the use of passengers manifest for each trip

Ensure that the appropriate road worthiness certificate is obtained

Send safety report on quarterly basis to FRSC using the approved format

Implementation of RTSSS... Role of Safety Managers



Observed and vet
drivers temperament
and criminal records(s)
before employment,
and

Ensure regular training and
re-training of drivers

Implementation of RTSSS

For the effective implementation of the RTSSS, the scheme assigned specific roles as follows

3

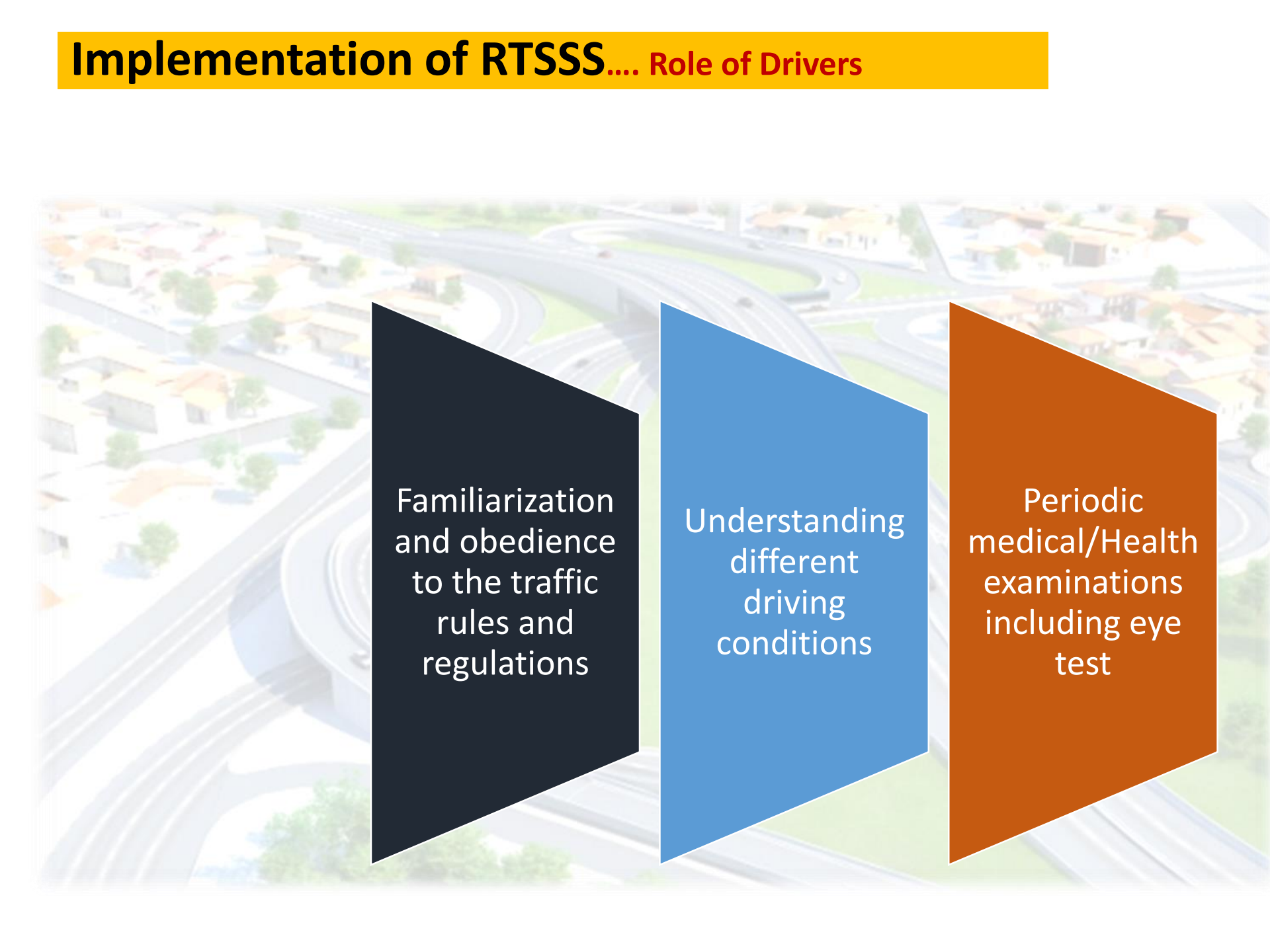
The driver's
roles
include

Possession of
valid driver's
licence

Must pass
driver
certification
programme

Familiarization
with the
company's
safety policies

Implementation of RTSSS.... Role of Drivers

An aerial photograph of a complex highway interchange with multiple overpasses and ramps. The image is slightly faded to serve as a background. Three large, semi-transparent colored boxes are overlaid on the image: a dark blue box on the left, a medium blue box in the center, and an orange box on the right. Each box contains white text describing a role of drivers in the RTSSS implementation.

Familiarization
and obedience
to the traffic
rules and
regulations

Understanding
different
driving
conditions

Periodic
medical/Health
examinations
including eye
test

Implementation of RTSSS.... Role of Drivers

An aerial photograph of a complex highway interchange with multiple overpasses and ramps. The image is slightly faded. Overlaid on the image are three large, semi-transparent, trapezoidal boxes. The leftmost box is orange and contains the text 'Use of log book'. The middle box is blue and contains the text 'Knowledge of vehicle working system and pre-trip post-trip inspection'. The rightmost box is dark blue/black and contains the text 'Proper use of communication systems to aid emergency processes'.

Use of log book

Knowledge of
vehicle working
system and pre-
trip post-trip
inspection

Proper use of
communication
systems to aid
emergency
processes

GROUPING

GROUP A -
Operators with at
least 100 vehicles

GROUP B -
Between 25 and 99
vehicles

GROUP C - Less
than 25 vehicles.

CLASSIFICATION

CLASS A -
Operators
with at least
80% Score of
the variable
parameters

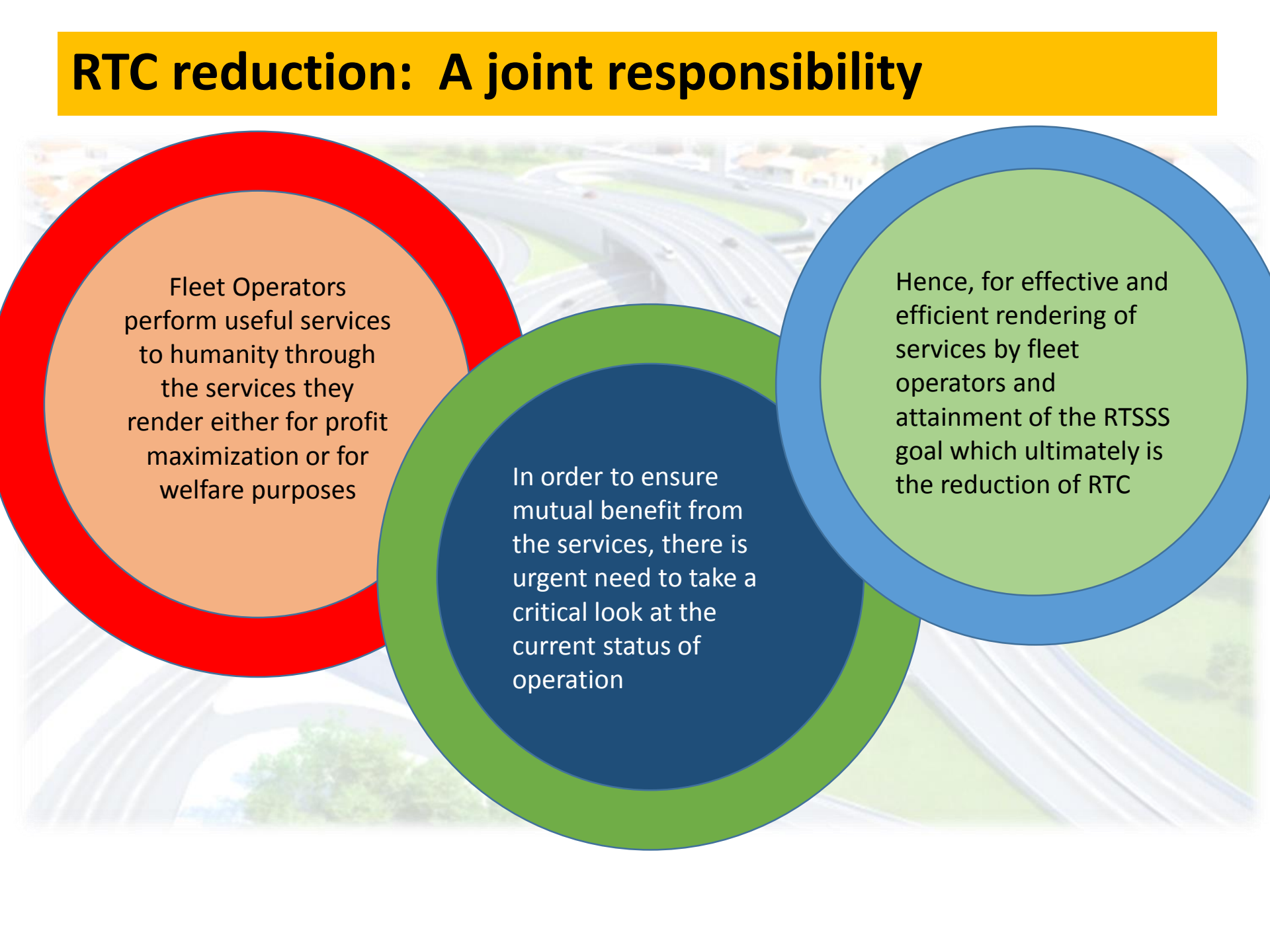
CLASS B -
Operators
with at least
60-79% Score
of the
variable
parameters

CLASS C -
Operators
with at least
50-59% Score
of the
variable
parameters

CLASS CP/F
- Operators
with less than
50% Score of
the variable
parameters

| COMPARISONS OF CERTIFICATION EXERCISE | | | | | | | | | | | | | | | | |
|---------------------------------------|------|-----------------------|----------------------------------|---------------|----|----|----|----|-----|----|-----|-----|-----|-----|-----|--------------|
| | | | | | | | | | | | | | | | | |
| S/N | YEAR | NO OF FLEET INSPECTED | NO. OF FLEET OPERATORS CERTIFIED | GROUP & CLASS | | | | | | | | | | | | TOTAL FAILED |
| | | | | AA | AB | AC | BA | BB | BC | CA | CB | CC | ACP | BCP | CCP | |
| 1 | 2011 | 1091 | 931 | 16 | 29 | 47 | 13 | 50 | 88 | 13 | 76 | 177 | 44 | 70 | 308 | 422 |
| 2 | 2012 | 1033 | 722 | 22 | 33 | 31 | 16 | 62 | 82 | 36 | 102 | 130 | 11 | 57 | 140 | 208 |
| 3 | 2013 | 1165 | 870 | 10 | 44 | 17 | 23 | 86 | 42 | 33 | 160 | 127 | 24 | 82 | 222 | 328 |
| 4 | 2014 | 1255 | 637 | 3 | 3 | 8 | 34 | 78 | 215 | 29 | 66 | 163 | 5 | 10 | 23 | 170 |
| 5 | 2015 | 1081 | 544 | 34 | 38 | 59 | 17 | 85 | 170 | 11 | 31 | 79 | 0 | 5 | 15 | 20 |

RTC reduction: A joint responsibility



Fleet Operators perform useful services to humanity through the services they render either for profit maximization or for welfare purposes

In order to ensure mutual benefit from the services, there is urgent need to take a critical look at the current status of operation

Hence, for effective and efficient rendering of services by fleet operators and attainment of the RTSSS goal which ultimately is the reduction of RTC

the followings are critically imperative



There must be collaborative efforts among all the stakeholders; the operators and enforcers

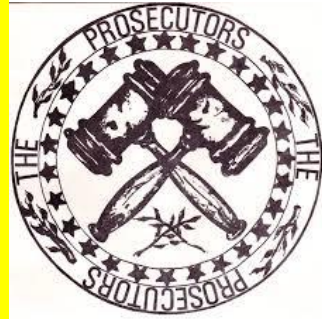
There must be a periodic forum such as this where transport operators are educated on traffic rules and regulations among others pertinent motoring issues



Strict compliance to the roles assigned to various stakeholders in this Scheme



Full enforcement, blacklisting and prosecution of non-compliant operators



Full implementation of the approved passengers manifest



THANK YOU

Phone Only



SMS Only



**Call toll free on: 122
0700 - CALL - FRSC
0700 - 2255 - 3772**

080 7769 0362

www.frsc.gov.ng