

3rd QUARTER ASSESSMENT OF RSHQ DEPTS/COS BY THE CMO

MONTH/YEAR: JUL - SEP 2011

DEPTS/COS	REPORTING	PLANNING / MONITORING	ALIGNED SERVICE STANDARDS	CAPACITY BUILDING	TEAM WORK & COLLABORATION	FINANCIAL & RESOURCE MGT.	TOTAL	POSITION
OPS	20	10	14	10	5	15	84	1 ST
SMP	20	18	13	7	7	15	80	2 ND
CTSO	20	10	14	10	10	15	79	3 RD
CPRO	20	10	16	10	3	15	74	4 TH
CA	20	10	13	10	2	10	65	5 TH
CMRS	11	10	13	5	5	15	59	6 TH
F&A	18	12	13	10	5	0	57	7 TH
CS	20	14	13	6	3	0	56	8 TH
CP	19	12	14	7	4	0	56	8 TH
TSC	15	14	13	10	2	0	54	10 TH
SED	17	10	14	10	3	0	54	10 TH
CLA	19	14	14	3	3	0	53	12 TH
CPEO	20	10	13	5	3	0	51	13 TH
MVA	16	8	12	0	0	15	51	13 TH
CLOG	18	6	15	4	3	0	46	15 TH
AHR	12	12	14	5	2	0	45	16 TH
CPL	15	8	13	2	2	0	40	17 TH
CIO	5	14	13	4	3	0	40	17 TH
PRS	15	6	13	0	0	5	39	19 TH
BUD	13	4	13	4	3	0	37	20 TH

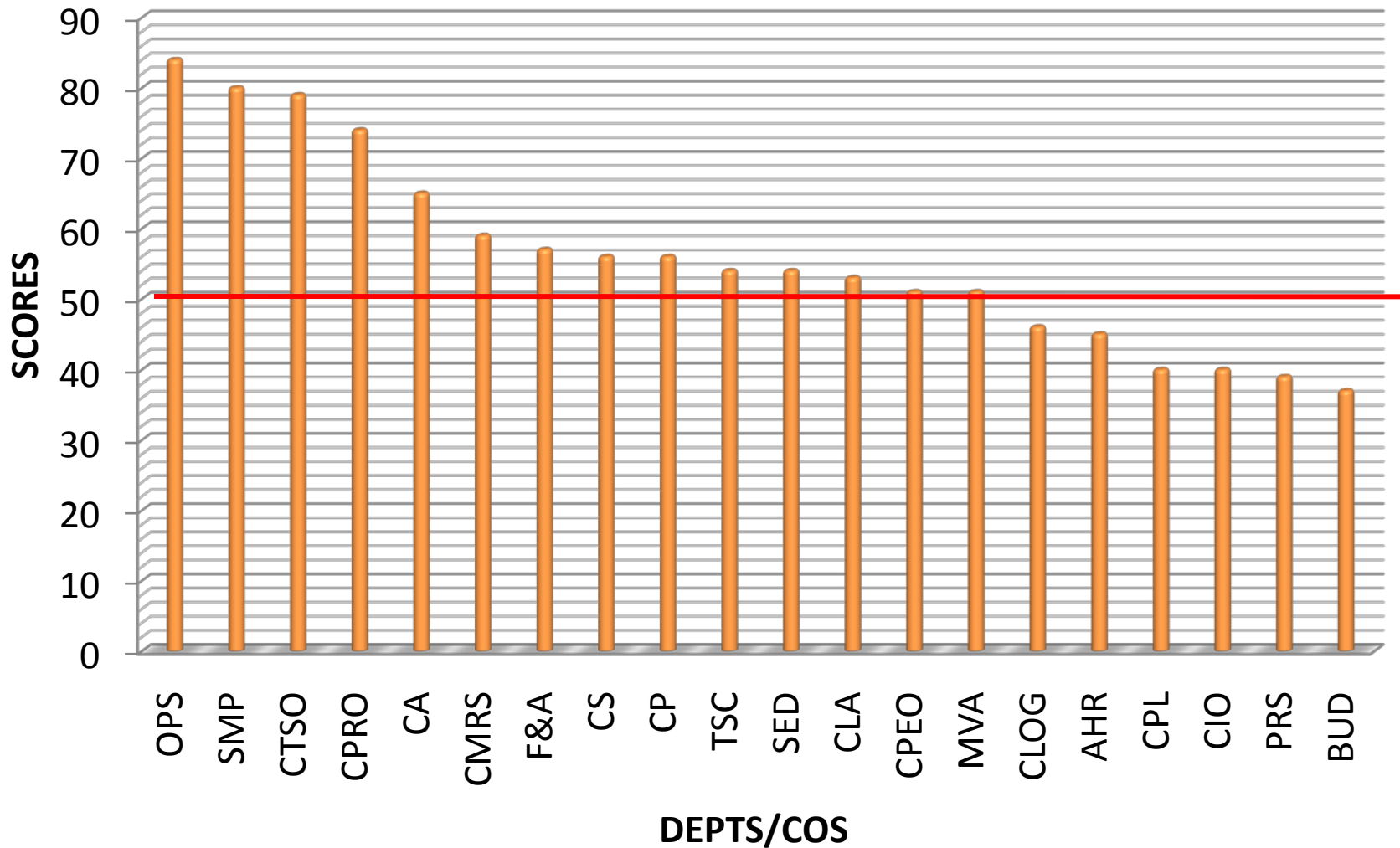
KEY

GREEN	EXCELLENT	80 - 100
BLUE-	VERY GOOD	70 - 79
ORANGE-	GOOD	60 - 69
YELLOW	- FAIR	50 - 59
RED -	FAIL	0 - 49

Above 50% Score - 70%

3rd QUARTER ASSESSMENT OF RSHQ DEPTS/COS BY THE CMO

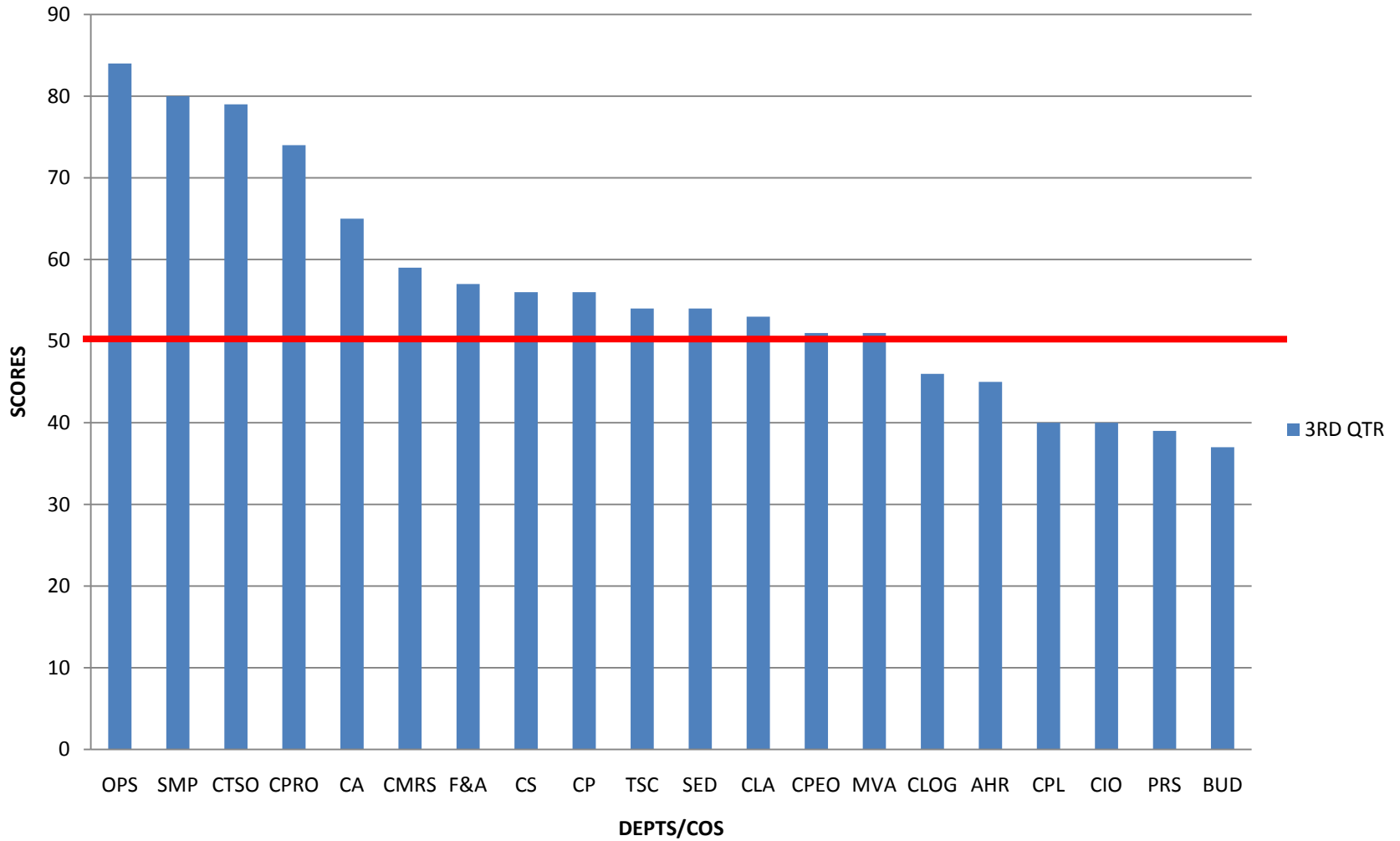
MONTH/YEAR: JUL - SEP 2011



Above 50% Score - 70%

3rd QUARTER ASSESSMENT OF RSHQ DEPTS/COS BY THE CMO

MONTH/YEAR: JUL - SEP 2011



Above 50% Score - 70%