

RESTRICTED

# 2<sup>ND</sup> QUARTER ASSESSMENT OF RSHQ DEPTS/COS BY THE CMO

## MONTH/YEAR: APR - JUN 2012

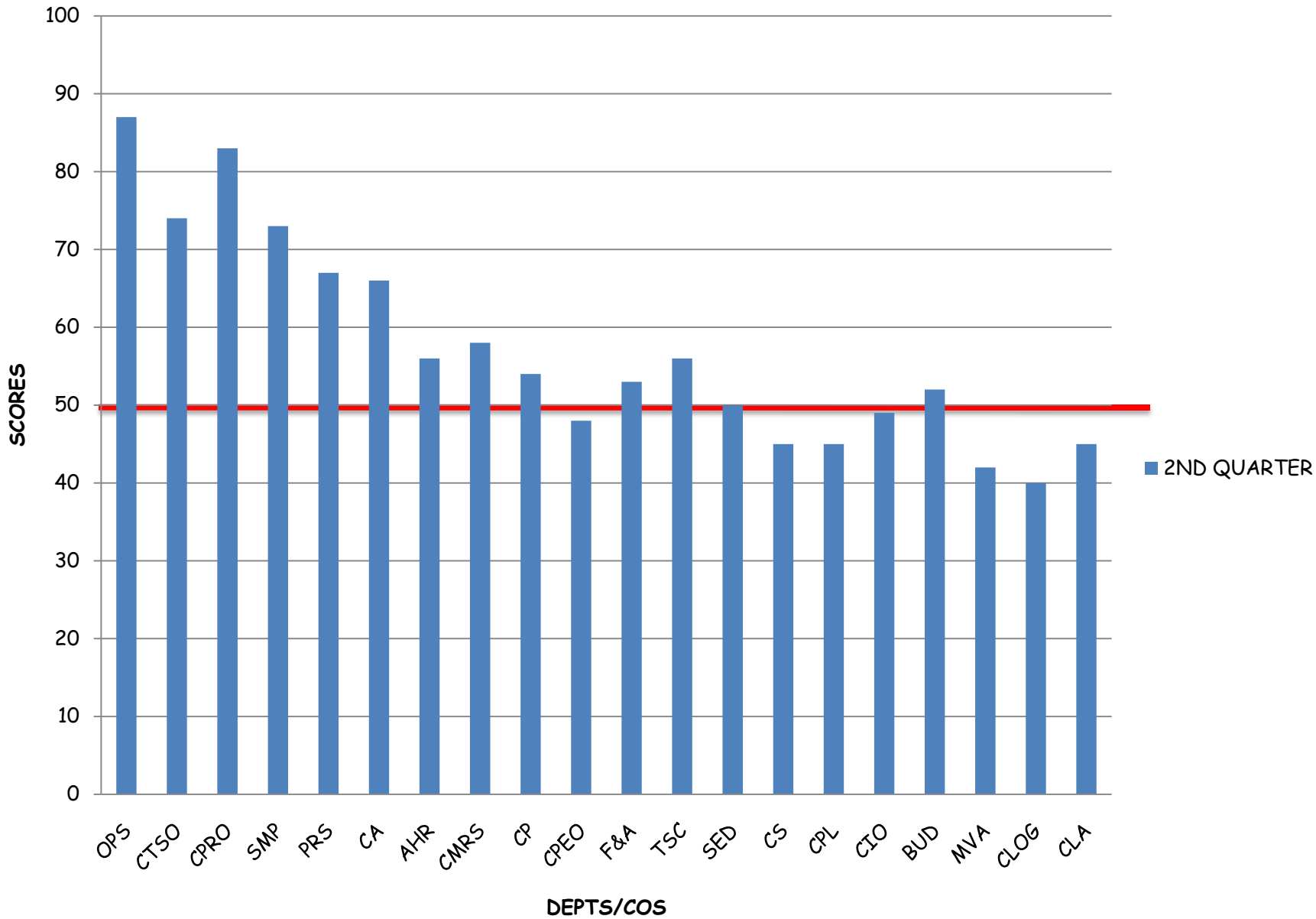
DEPTs/COs	REPORTING 20%	PLANNING / MONITORING 32%	ALIGNED SERVICE STANDARDS 18%	CAPACITY BUILDING 10%	TEAM WORK & COLLABORATION 5%	FINANCIAL & RESOURCE MGT. 15%	TOTAL	POSITION
OPS	20	24	13	10	5	15	87	1 <sup>ST</sup>
CPRO	20	20	16	10	2	15	83	2 <sup>ND</sup>
CTSO	20	12	13	9	5	15	74	3 <sup>RD</sup>
SMP	20	14	13	10	1	15	73	4 <sup>TH</sup>
PRS	19	8	12	10	3	15	67	5 <sup>TH</sup>
CA	20	6	14	10	1	15	66	6 <sup>TH</sup>
CMRS	19	8	12	0	4	15	58	7 <sup>TH</sup>
AHR	20	14	13	9	0	0	56	8 <sup>TH</sup>
TSC	20	14	12	10	0	0	56	8 <sup>TH</sup>
CP	20	12	11	10	1	0	54	10 <sup>TH</sup>
F&A	19	10	12	7	5	0	53	11 <sup>th</sup>
BUD	19	8	10	3	2	10	52	12 <sup>TH</sup>
SED	18	8	11	9	4	0	50	13 <sup>TH</sup>
CIO	17	14	12	4	2	0	49	14 <sup>TH</sup>
CPEO	20	8	13	5	2	0	48	15 <sup>TH</sup>
CS	19	12	10	2	2	0	45	16 <sup>TH</sup>
CPL	18	4	12	9	2	0	45	16 <sup>TH</sup>
CLA	19	8	13	2	3	0	45	16 <sup>TH</sup>
MVA	14	18	10	0	0	0	42	19 <sup>TH</sup>
CLOG	14	6	12	8	0	0	41	20 <sup>TH</sup>

**KEY**

GREEN	EXCELLENT	80 - 100
BLUE-	VERY GOOD	70 - 79
ORANGE-	GOOD	60 - 69
YELLOW	- FAIR	50 - 59
RED -	FAIL	0 - 49

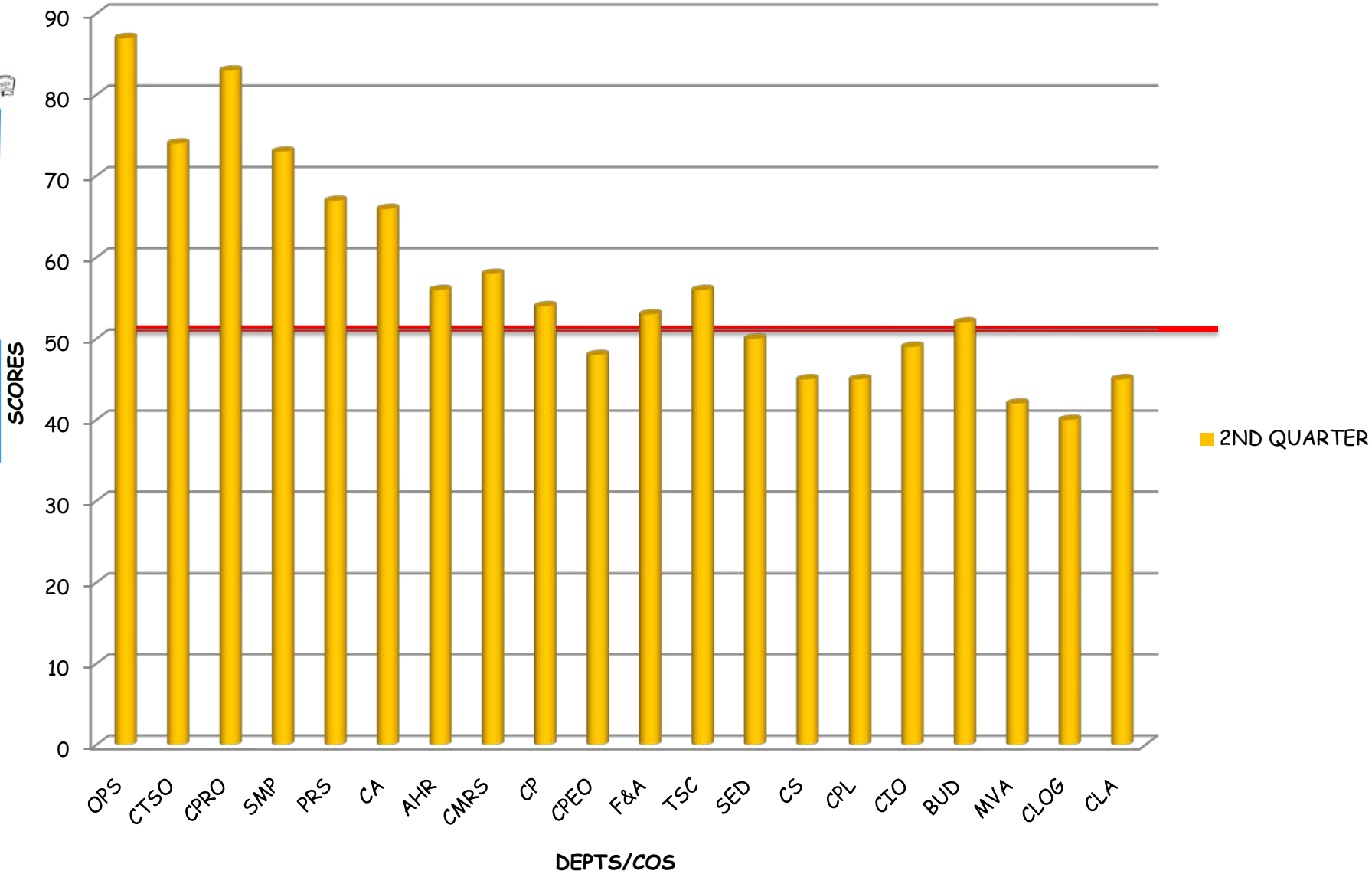
**Above 50% Score - 65%**

# 2ND QUARTER 2012 ASSESSMENT OF DEPTS/COS BY THE CMO



Above 50% Score - 65%

# 2ND QUARTER 2012 ASSESSMENT OF DEPTS/COS BY THE CMO



**Above 50% Score - 65%**