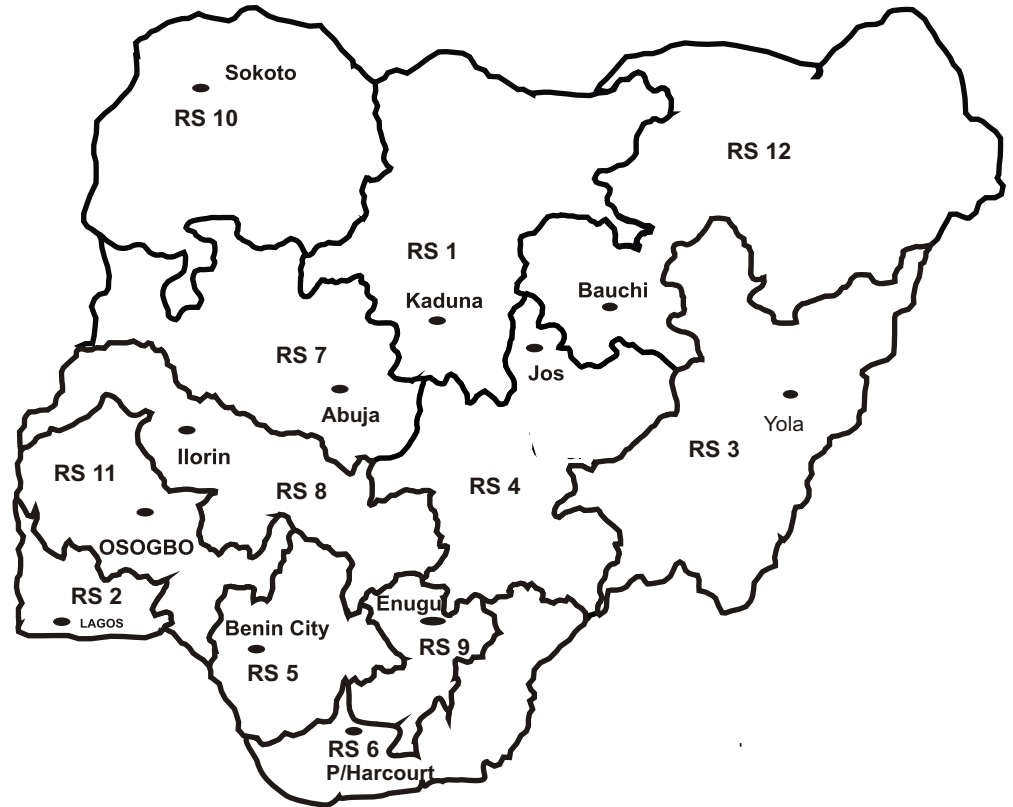


FRSC DIRECTORY

MAP OF NIGERIA SHOWING THE ZONAL COMMAND STRUCTURE OF FRSC

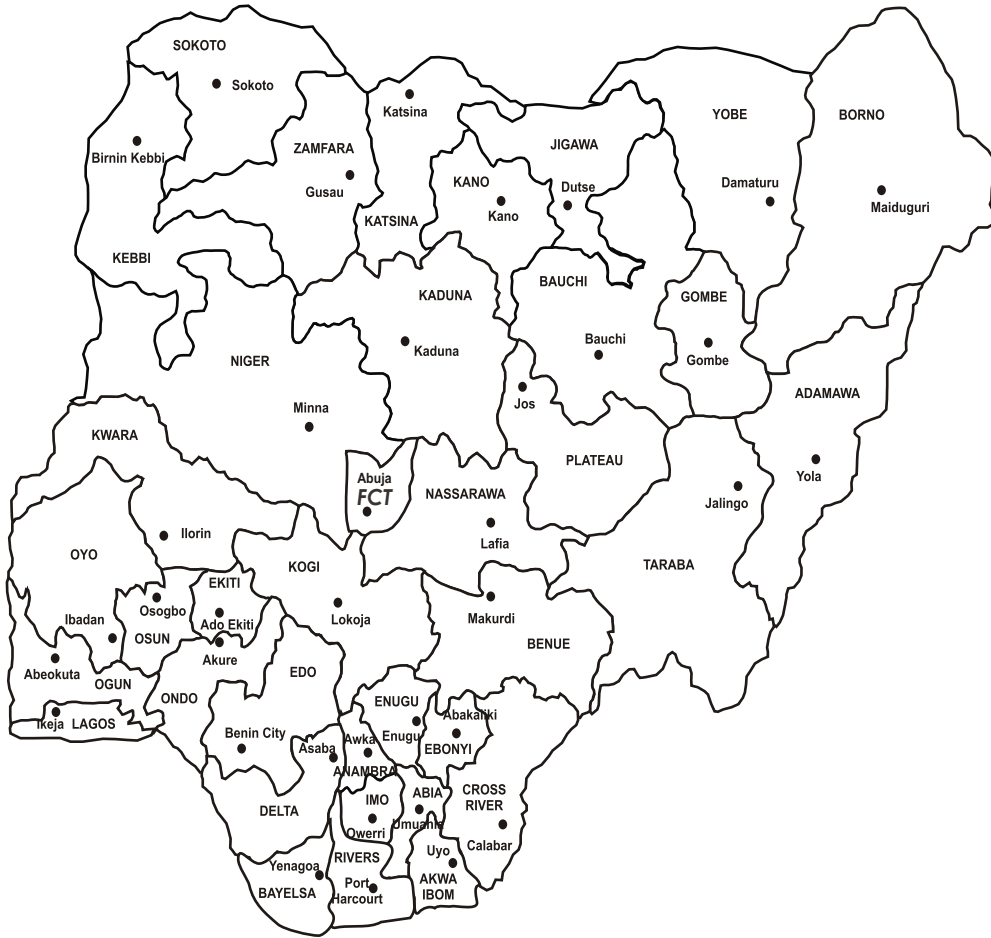


STRICTLY FOR
PRIVATE CIRCULATION
OCT, 2007

LEGEND

● ZONAL COMMAND HEADQUARTERS

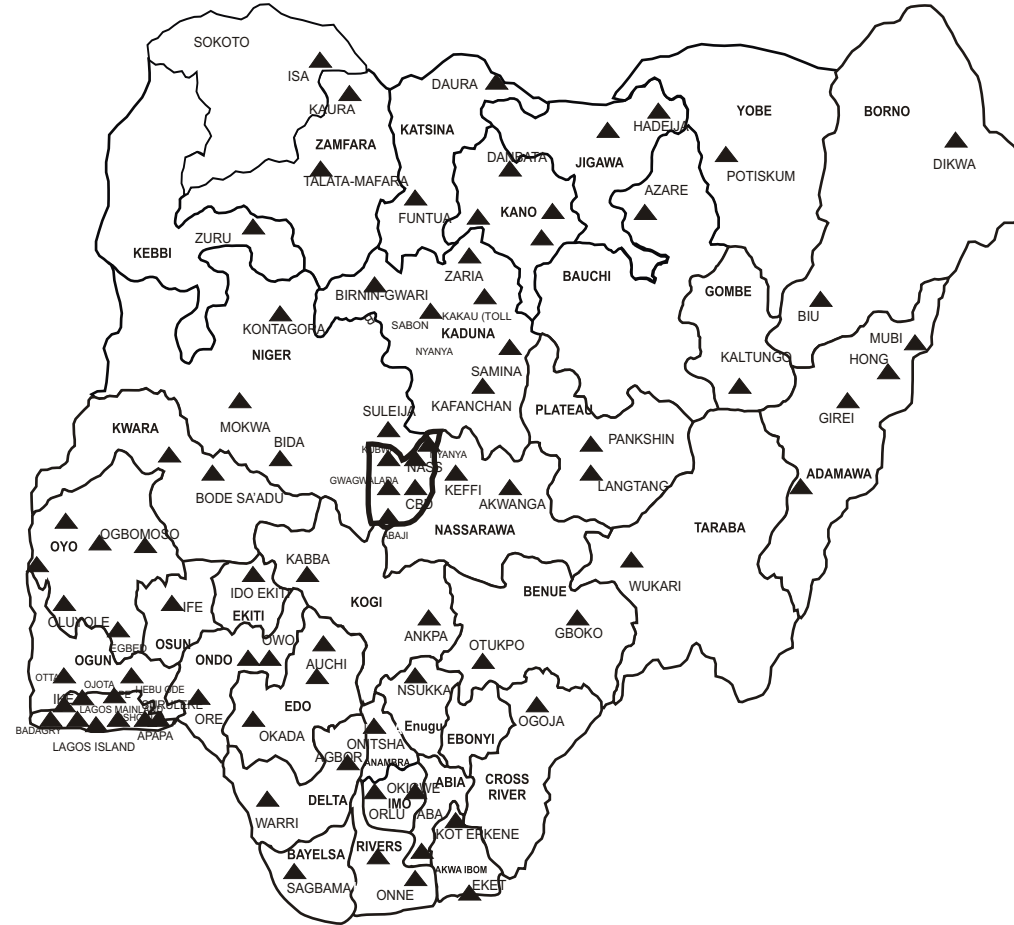
MAP OF NIGERIA SHOWING THE SECTOR COMMANDS OF FRSC



LEGEND

- SECTOR COMMANDS

MAP OF NIGERIA SHOWING THE LOCATIONS OF UNIT COMMANDS OF FRSC



LEGEND

- ▲ UNIT COMMANDS

TABLE OF CONTENTS

PERSONAL DETAILS

KNOW THE ROAD SIGNS

THE JOURNEY SO FAR

FRSC ROAD COMMUNICATION

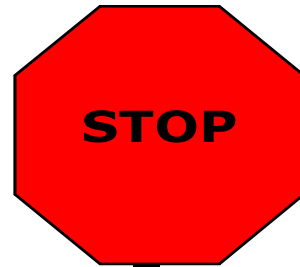
(CODES AND LINKS)

BOARD MEMBERS OF THE GOVERNING COUNCIL

NATIONAL HEADQUARTERS

ZONAL, SECTOR AND THE UNIT COMMANDS

SPECIAL MARSHALS DEPARTMENT



Join the crusade for a safe
Road culture NOW!

PERSONAL DETAILS

NAME _____
HOME ADDRESS _____
HOME TELEPHONE NO. _____
BUSINESS ADDRESS _____
BUSINESS TELEPHONE NO _____
DOCTOR _____
ADDRESS _____
TELEPHONE _____
BLOOD GROUP _____
DRIVER'S LICENCE NO. _____
DATE OF ISSUE _____ DATE OF EXPIRY _____
ISSUED AT _____
CAR REGISTRATION NUMBER _____
INSURANCE _____
ENGINE NUMBER _____
CHASIS NUMBER _____
PASSPORT NUMBER _____ RENEWAL DATE _____
INSURANCE POLICIES _____
NO. _____ DUE _____
NO. _____ DUE _____

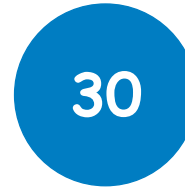
IN CASE OF ACCIDENT, PLEASE CONTACT:

NAME _____
ADDRESS _____
TELEPHONE NUMBER(S) HOME _____
TELEPHONE NUMBER(S) OFFICE _____

KNOW THE ROAD SIGNS BY THEIR SHAPES:



REGULATORY SIGNS are mostly circular in shape, and are of two types. Those with red circles are **PROHIBITIVE SIGNS**.



Those with blue circles but no red borders mostly give positive instructions and are **MANDATORY SIGNS**.



INFORMATIVE SIGNS are usually rectangular. They provide guidance information.



The **STOP SIGN** is a Prohibitive Sign. It is the **only 8-sided traffic sign**. It always means "come to complete stop before entering". Proceed when it is safe to do so.



WARNING SIGNS are usually triangular in shape, mostly with Red perimeter



WARNING SIGNS with inverted triangle means **YIELD** or **GIVE WAY**.

THE JOURNEY SO FAR

The Federal Government, in February 1988, established the Federal Road Safety Commission through Decree No 45 of 1988 as amended by Decree 35 of 1992 now referred to in the Statute books as the FRSC Act Cap 141 Law of the Federation of Nigeria (LFN) 1990. These enabling laws placed on the shoulders of the Commission the responsibility of organizing, administering and making policy with regard to Road Safety in Nigeria.

So far, the journey has been very challenging but interesting and encouraging.

ACHIEVEMENTS

1. The Federal Road Safety Commission embarked on programmes for the streamlining of all Road Traffic system related matters by ensuring order and control in the following areas:
 - a. The National Drivers' Licencing Scheme
 - b. The National Vehicle Licencing Scheme
 - c. The National Vehicle Identification Scheme
 - d. The National Vehicle Inspection Scheme
 - e. The National Vehicle Administration Scheme.
2. Under the supervision of the Corps Marshal and Chief Executive, the Department of Planning, Research And Statistics (PRAS), carried out researches in areas that can be guides for policy formulation purposes, on national issues, such as:
 - a. Volume and categories of vehicle in Nigeria.
 - b. Patterns of injury during accidents along designated routes.
 - c. Identification of black spots and accident prone areas.
 - d. Rate of fatality and classification of accidents. Accident classification and fatality rate.
 - e. Traffic Offences, patterns and psychology of Drivers and Passengers.
 - f. Impact of Road Safety and accident prevention measures.
 - g. Safety audits of some roads in the country.
 - h. Compliance with seat belt and crash helmet regulations.
3. On the international scene, Nigeria through the FRSC, serves as the President of the African Sub group of the International Road Safety Organisation (GPA-PRI)
4. The Prevention Routiere International (PRI) in Portugal adopted the FRSC approach to Road Traffic Management as a model for developing countries. FRSC is a member of the global body.
5. FRSC has Provided proposals for the establishment of Road Safety management policies in the following African countries Ethopia, Kenya, Guinea and Ghana with a view to seeking replication of some unique aspects of the FRSC operations like:
 - A. The Special Marshals Unit

- B. The Autonomous existence of the FRSC
- C. The independent enforcement of road traffic regulations etc.

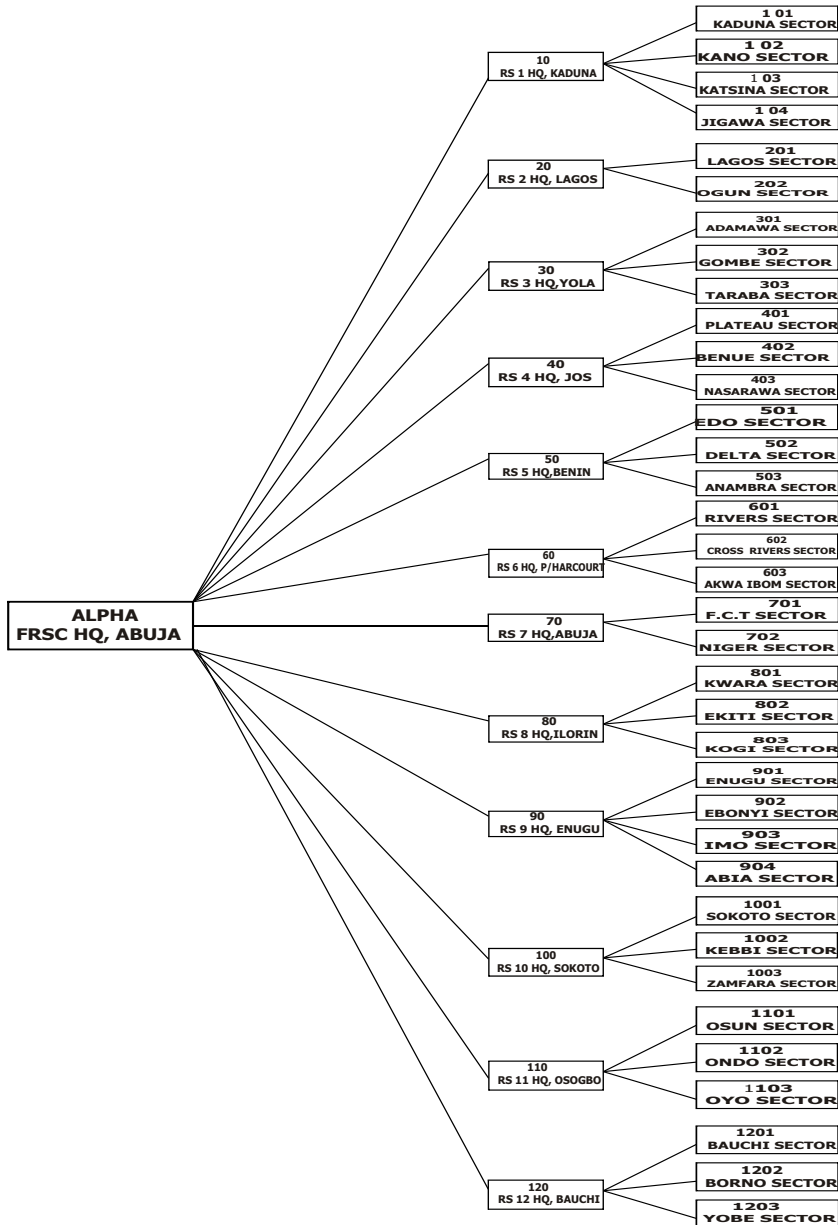
6. The National Road Traffic Regulations (NRTR) 1997 was put together and produced by the FRSC. It has since been revised and gazetted as National Road Traffic Regulations (NRTR) 2004.
7. The FRSC developed the following Schemes towards proper Road Traffic Safety Management.
 - a) The National Network of Emergency Road Services (NNERS)
 - b) The Driving Schools Standardization Programme, and
 - c) The National Road Network Guide.
8. FRSC provides references for some international bodies outside Africa;
 - a) New York State Motor Vehicle Department -on single card laminated Drivers' Licence.
 - b) Olympic Games Committee - on features of the National Drivers' Licence
 - c) The International Council on Alcohol, Drugs and Traffic Safety,(ICADTS) USA.

The strive for perfection continues as dream of an accident-free-Nigerian Roads is the Commission's target.

OSITA CHIDOKA

CORPS MARSHAL AND CHIEF EXECUTIVE.
FEDERAL ROAD SAFETY COMMISSION, NIGERIA.
JULY, 2007

FRSC RADIO COMMUNICATION CODES AND LINKS



FEDERAL ROAD SAFETY COMMISSION BOARD MEMBERS

S/NO	NAME	POSITION	TELEPHONE
1	AMB. GREG MBADIWE, MFR	CHAIRMAN	08033085903
2	BARR. EDEM KOOFFREH	MEMBER	08037199491
3	ENGR. A. ADELOYE	MEMBER	08023133093
4	HON. ZAILANI MOH'D WAZIRI	MEMBER	08033110178
5	KIKILE DAN ESUEME	MEMBER	08037113565
6	CLIFFORD O OGIAMIEN	MEMBER	08035993744
7	ARC. USMAN ARABI M BELLO	MEMBER	08037000000
8	MALLAM TANKO KOKWAIN	MEMBER	08033042726
9	DR. PATRICK A. KWAJI	MEMBER	08035886612
10	CHIEF (HON.) PAWORISO SAMUEL-HORSEFALL (JP)	MEMBER	08033103044
11	MADAM MAY CLEMENT	MEMBER	08034393657

NATIONAL HEADQUARTERS

S/N	NAME	RANK	TELEPHONE
1.	OSITA CHIDOKA	COMACE	09-5231070
2.	FA OSINNUWA	DCM	09-5236442 09-5236455

HEADS OF DEPARTMENT

1.	BO OYEYEMI, MFR	ACM (PRAS)	09-5234643 09-5238676
2.	DH BAFFA	ACM (ADMIN & SUPPLY)	09-5232126
3.	UBA HASSAN	ACM (LOGISTICS)	09-5234153
4.	OE ANYAOKU	ACM (TRAINING)	09-5234642
5.	L NWUGO	ACM (SMD)	08037255465
6.	H HARUNA	ACM (MVA)	09-5234472 09-5236272
7.	AK BROWNE, fwc	ACM (OPERATIONS)	09-5233691
8.	O. JATTO	ACM (FINANCE & ACCOUNT)	09-5231220

LEGEND

COMACE	CORPS MARSHAL AND CHIEF EXECUTIVE
SACOMACE	SPECIAL ASSISTANT TO COMACE
DCM	DEPUTY CORPS MARSHAL
ACM	ASSISTANT CORPS MARSHAL
ULS	UNIFORM LICENSING SCHEME
INT	INTELLIGENCE
STB	SECRETARY TENDERS BOARD
PSO	PRINCIPAL STAFF OFFICER
PA	PERSONAL ASSISTANT
ADC	AIDE-DE-CAMP

CORPS OFFICERS

S/N	NAME	RANK	TELEPHONE
1.	CD NWACHUKWU	ACM (CORPS LEGAL ADVISER)	08035874974
2.	OY ATTAH	CC (CORPS PED)	09-5236309
3.	UB AJINGI	CC (CORPS PROTOCOL)	09-5236662
4.	DG TERRANG	CC (CORPS SEC)	09-5230868
5.	OI EWRUDJAKPOR	CC (CORPS RESCUE)	07027862349
6.	K AGOMOH	CC (CORPS INTELLIGENCE)	09 5230153
7.	CC OTI	CC (CORPS AUDIT)	09-5230158
8.	DU MENDIE	DCC (CORPS PROVOST)	08054116673
9.	IM NAWADA	DCC (STB/CPO)	08033284797

HEAD OF SECTION

1.	C NWAKA	CC (INSPECTORATE)	08034723441
2.	SB MEDUGU	CC (SUPPLY)	08034407618
3.	C THEOPHILUS	CC (ULS)	08033112701
4.	S MAITIZUMAS	CC (BUDGET)	08055270005
5.	VC NWOKOLO	CC (FED OPS)	08023422445
6.	BA SANI	CC (SMD)	08023801416
7.	AO ADEBOYE	CC (LOG 1)	08055263700
8.	AA BAZZA	CC (CMD ADMIN)	08033971100
9.	A MOORE	CC (PERSONNEL)	08029525421
10.	HZ FOUMSUK	CC (MVA)	08033313732
11.	K NWAEGBE	CC (LOG II)	08023146680
12.	EO ABE	DCC (MPD)	080
13.	LS KINYA	CC (RESEARCH)	08036548470
14.	GV NGUEKU	DCC (PLANNING)	08055178570
15.	MK IDRIS	DCC (ADMIN)	08036045653
16.	AD IBEZIM	DCC (PENSION)	08023674008
17.	C OFORDU	ACC (Ag. HOS ACCOUNTS)	080

CORPS MARSHAL'S OFFICE (CMO)

S/N	NAME	RANK	TELEPHONE
1.	JANET ADEPEGBA	SA	09-5231857 09-5239902
2.	JA ASOM	PSO	08037214025
3.	EP OSAWE	CC PLANNING	08062275186
4.	NASIRU INGAWA	PA	08053333496
5.	UDENSI EMEA ORJI	ADC	08033836933

FIELD COMMANDS

S/N	COMMAND	ADDRESS	COMMANDING OFFICER	RANK	TELEPHONE NUMBER(S)	OFFICE TELEPHONE	E-MAIL ADDRESS
1.	RS1HQ KADUNA	FRSC ZONE RS1HQ 12 AHMADU BELLO WAY, PMB 2323, KADUNA, KADUNA STATE	WK LEPZEM	ACM	08037440422	062-211415	rs1@frsc.gov.ng
2.	RS1.1 KADUNA SECTOR COMMAND	FRSC, RS1.1, 12 A/ BELLO WAY, PMB 2323, KADUNA	NC AKPABIO	CC	08035752108 08028509363	062-243022	rs1.1@frsc.gov.ng
3.	RS1.2 KANO SECTOR COMMAND	FRSC, RS1.2 LAWAN DAMANZAU RD, KANO.	IA AHMED	DCC	08035878255	064-665765	rs1.2@frsc.gov.ng
4.	RS1.3 KATSINA SECTOR COMMAND	FRSC RS1.3 MURTALA MOHD WAY (SOKOTO RIMA PREMISES) KATSINA	UG ALIYU	DCC	08025743435 08036890267	065-433686	rs1.3@frsc.gov.ng
5.	RS1.4 JIGAWA SECTOR COMMAND	FRSC RS1.4, P.O. BOX 23, DUTSE JIGAWA STATE	SU UMAR	DCC	08065546830	064721306	rs1.4@frsc.gov.ng
6.	RS1.11 KAFANCHAN UNIT COMMAND	FRSC RS1.11, OPP. JEMAA L/G, SEC. PMB 1000, KAFANCHA KADUNA	ADO YUSUF	CRC	08065302264 08055225666		rs1.11@frsc.gov.ng
7.	RS1.12 B/GWARI UNIT COMMAND	FRSC RS1.12, P.O. BOX 127 B/GWARI KADUNA STATE	OTEKO	CRC	08026592882	009-88216 46653346	rs1.12@frsc.gov.ng
8.	RS1.13 ZARIA UNIT COMMAND	FRSC RS1.13, SOKOTO RD, OPP. GRA JUNCTION, PMB1051 S/GARI, ZARIA, KADUNA STATE	MO ADEOYE	CRC	08033775307	069-334227	rs1.13@frsc.gov.ng
9.	RS1.14 SAMINAKA UNIT COMMAND		YUSUF ISAH	CRC			rs1.14@frsc.gov.ng
10.	RS1.15 SABON-TASHA UNIT COMMAND		TSUKAN KUMAR	CRC	08036870936		rs1.15@frsc.gov.ng
11.	RS1.16 KAKAU UNIT COMMAND		OT MEDUPIN	CRC			rs1.16@frsc.gov.ng
12.	RS1.21 DAMBATA UNIT COMMAND	FRSC S1.21 BEHIND NITEL OFFICE, DAMBATA	RA KOLI	CRC	08044120888	064-250067	rs1.21@frsc.gov.ng
13.	RS1.22 KANO MUNICIPAL UNIT COMMAND		U UZAIRU	ACC			rs1.22@frsc.gov.ng
14.	RS1.23 KANO FAGGE UNIT COMMAND		SJ NUMAN	CRC	08023725221		rs1.23@frsc.gov.ng
15.	RS1.24 KANO NASSARAWA UNIT COMMAND		LD SHEHU	CRC			rs1.24@frsc.gov.ng
16.	RS1.25 CHIROMAWA UNIT COMMAND		OD AREMO	ACC			rs1.25@frsc.gov.ng

S/N	COMMAND	ADDRESS	COMMANDING OFFICER	RANK	TELEPHONE NUMBER(S)	OFFICE TELEPHONE	E-MAIL ADDRESS
17.	RS1.26 FALGORE GAME RESERVE UNIT COMMAND		ABDU GARBA	CRC			rs1.26@frsc.gov.ng
18.	RS1.31 FUNTUA UNIT COMMAND	FRSC RS1.31 ZARIA RD FUNTUA KATSINA STATE	BB UMAR	CRC	08037879516 08065356526	069-770985	rs1.31@frsc.gov.ng
19.	RS1.32 DAURA UNIT COMMAND	FRSC RS1.32 DUNU AREA, KANO ROAD PMB 1024 DAURA, KATSINA STATE	MB BATURE	CRC	08035991988 08026809601	066-57288	rs1.32@frsc.gov.ng
20.	RS1.41 HADEJIA UNIT COMMAND	FRSC RS1.41, P.O. BOX 266, HADEJIA, JIGAWA	DB BODULENG	ACC	08055084521	078-20921	rs1.41@frsc.gov.ng
21.	RS1.42 GUMEL UNIT COMMAND		RI DAMBATA	CRC	08058231028		rs1.42@frsc.gov.ng
22.	RS 2HQ LAGOS	FRSC, ZONE 2 COMMAND OTODU ISHERI ROAD, PMB 21510, IKEJA LAGOS	M ABU	ACM	08033267318	01-7912418	rs2@frsc.gov.ng
23.	RS2.1 LAGOS STATE SECTOR COMMAND	FRSC, RS2.1 OJODU ISHERI ROAD, PMB 21510, IKEJA LAGOS	JA AKOLO	CC	08056034874 08033402748	08-7933148 01-7200066	rs2.1@frsc.gov.ng
24.	RS2.2 OGUN STATE UNIT COMMAND	FRSC RS2.2, 8 OBA ADEMOLA RD, GRA IBADAN, P.O BOX 3943, SAPON POST OFFICE ABEOKUTA OGUN STATE	MO OLAGUNJU	CC		038-242756	rs2.2@frsc.gov.ng
25.	RS2.11 BADAGRY UNIT COMMAND	FRSC, RS2.11 SEME BORDER FD TRANS- WEST AFRICAN HIGHWAY JAVA TOPA	JO ANEKE	ACC	0806772030		rs2.11@frsc.gov.ng
26.	RS2.12 EPE UNIT COMMAND	FRSC, RS2.12 MECHANIC VILLAGE, ITA-OSUGBO, P.O. BOX 485, LAGOS	UK HASSAN	CRC	08056717934 08060302034	01-777252	rs2.12@frsc.gov.ng
27.	RS2.13 APAPA UNIT COMMAND	FRSC RS2.13 EURO SIXTYFIVE VICTORIA ISLAND LAGOS	SM AJAYI	ACC			rs2.13@frsc.gov.ng
28.	RS2.14 LAGOS ISLAND UNIT COMMAND	FRSC RS2.14, 3 RD MAINLAND BRIDGE RING ROAD, LAGO	HU OMEJE	ACC	08033863147	01-7939110	rs2.14@frsc.gov.ng
29.	RS2.15 LAGOS MAINLAND COMMAND	FRSC RS2.15, YABA, LAGOS STATE	SA AJODI	CRC	08033829769	01-7939112	rs2.15@frsc.gov.ng
30.	RS2.16 SURULERE UNIT COMMAND	FRSC, RS2.16, IPONRI, LAGOS	FY SHINGU	ACC	08034175979 08051664072	01-7939111	rs2.16@frsc.gov.ng
31.	RS2.17 OJOTA UNIT COMMAND	FRSC, RS2.17, KETU INTERSECTION, LAGOS	VMT JACK	ACC	08035850983 08023032148	01-7936184	rs2.17@frsc.gov.ng

S/N	COMMAND	ADDRESS	COMMANDING OFFICER	RANK	TELEPHONE NUMBER(S)	OFFICE TELEPHONE	E-MAIL ADDRESS
32.	RS2.18 IKEJA UNIT COMMAND	FRSC, RS2.18, IKEJA	AA EZURIKE	ACC	08033409543	01-7936184	rs2.18@frsc.gov.ng
33.	RS2.19 OSHODI UNIT COMMAND	FRSC, RS2.19 CHALLENGE BUS STOP, OLD AGEGE RD, LAGOS	W A GORA	ACC	08033683332 08051131811	01-7936182	rs2.19@frsc.gov.ng
34.	RS2.21 IJEBU-ODE UNIT COMMAND	FRSC, RS2.21, IJEBU ODE TOLL GAGE, SAGAMU EXPRESS WAY, OGUN STATE	MK ISMAILA	ACC	08023665222	037-432792	rs2.21@frsc.gov.ng
35.	RS2.22 OTTA UNIT COMMAND	FRSC, RS2.22, OTTA TOLL GATE, OTTA	PO EMEORDI	ACC	08037225965		rs2.22@frsc.gov.ng
36.	RS2.23 MOWE UNIT COMMAND	FRSC, RS2.23 MOWE, OGUN STATE	UI OJTEAMIREN	ACC	08033591063		rs2.23@frsc.gov.ng
37.	RS2.24 OGERE UNIT COMMAND						rs2.24@frsc.gov.ng
38.	RS3HQ YOLA	FRSC, ZONE RS3HQ, NUMAN RD P.O. BOX 1113, JIMETA YOLA	GO OLANIRAN	CC	08033139887	075-625392	rs3@frsc.gov.ng
39.	RS3.1 ADAMAWA STATE SECTOR COMMAND	FRSC, RS3.1, NUMAN RD P.O. BOX 1113, JIMETA YOLA					rs3.1@frsc.gov.ng
40.	RS3.2, GOMBE STATE SECTOR COMMAND	FRSC, RS3.2, P.O. BOX 190 GOMBE, GOMBE.	OF UDOMA	CC	08037487766	072-223608	rs3.2@frsc.gov.ng
41.	RS3.3 TARABA STATE SECTOR COMMAND	FRSC, RS3.3, P.O. BOX 484, JALINGO.	AM HUSSAINI	DCC	08055029237 08025762682	079-223061	rs3.3@frsc.gov.ng
42.	RS3.11 MUBI UNIT COMMAND	FRSC, RS3.11, PO BOX MUBI ADAMAWA.	AA KUMAPAYI	ACC	08057066378 08069217450	075-882826	rs3.11@frsc.gov.ng
43.	RS3.12 HONG UNIT COMMAND	FRSC, RS3.12 MARABA ROAD HONG ADAMAWA STATE	JY DAYAR	CRC			rs3.12@frsc.gov.ng
44.	RS3.13 GIREI UNIT COMMAND	FRSC, RS3.13, GIREI UNIT COMMAND	T MABUSAN	CRC	08023634273 08053471054	08058010006	rs3.13@frsc.gov.ng
45.	RS3.14 NUMAN UNIT COMMAND		JK ADAMU	CRC			rs3.14@frsc.gov.ng
46.	RS3.15 MICHIKA UNIT COMMAND		ISA INUSA	ACC			rs3.15@frsc.gov.ng
47.	RS3.21 KALTUNGO UNIT COMMAND	FRSC, GOMBE ROAD, KALTUNGO	DS VISKA	CRC	08020973920 08065703725	072-43155	rs3.21@frsc.gov.ng
48.	RS3.31 WUKARI UNIT COMMAND	FRSC, TAKUM ROAD, PO BOX305, WUKARI TARABA STATE	I DANLADI	CRC	08032643690	046-20652	rs3.31@frsc.gov.ng
49.	RS4HQ JOS	FRSC, KM 9 ZARIA RD PO BOX 7571, JOS PLATEAU STATE	M SHEHU	CC	08024471571		rs4@frsc.gov.ng
50.	RS4.1 PLATEAU STATE SECTOR COMMAND	FRSC, RS4.1 KM 9 ZARIA ROAD P.O. BOX 7571, JOS PLATEAU STATE	EA ZAMBER	DCC	08036944882	044-531945	rs4.1@frsc.gov.ng

S/N	COMMAND	ADDRESS	COMMANDING OFFICER	RANK	TELEPHONE NUMBER(S)	OFFICE TELEPHONE	E-MAIL ADDRESS
51.	RS4.2 BENUE SECTOR COMMAND	FRSC, RS4.2, NO.2 VICTOR MALU RD, 9 NEW GRA, MAKURDI, BENUE STATE					044-531945 rs4.2@frsc.gov.ng
52.	RS4.3 NASSARAWA SECTOR COMMAND	FRSC, RS 4.3, PO BOX 177, LAFIA, NASSARAWA STATE	NS HELDA	DCC	08036365300	047-221774	rs4.3@frsc.gov.ng
53.	RS4.11 LANGTANG UNIT COMMAND	FRSC, RS4.11, KM 1, LANGTANG/YELWA RD P.O. BOX 222, LANGTANG PLATEAU	BF BALOGUN	CRC	08035605045	070-52286	rs4.11@frsc.gov.ng
54.	RS4.12 PANKSHIN UNIT COMMAND	FRSC, 4.12, JOS RD, PO BOX 353, PANKSHIN, PLATEAU STATE	AO ACHODO	ACC	08035603045 08062658869 08076310019	070-20228	rs4.12@frsc.gov.ng
55.	RS4.13 HAWAN KIBO UNIT COMMAND		SI AKINTOLA	CRC			rs4.13@frsc.gov.ng
56.	RS4.21, GBOKO UNIT COMMAND	FRSC, RS4.21, OTUKPO LOCAL GOVT. SECRETARIAT P.O. BOX 117 LAFIA	UT USUJH	ACC		044-470061	rs4.21@frsc.gov.ng
57.	RS4.22 OTUKPO UNIT COMMAND	FRSC, RS4.22 OTUKPO LOCAL GOVT SECRETARIAT, BENUE	AC AGADA	CRC	08034224122	044-660160	rs4.22@frsc.gov.ng
58.	RS4.31 AKWANGA UNIT COMMAND	FRSC, RS4.31 AKWANGA WAMBA ROAD, AKWANGA NASSARAWA STATE	PF OKOH	CRC	08037115744	047-52619	rs4.31@frsc.gov.ng
59.	RS4.32 KEFFI UNIT COMMAND	FRSC, RS4.32, OLD SDP SEC, KM 4 KEFFI, AKWANGA ROAD, P.O. BOX 1043 KEFFI NASSARAWA STATE	ST AGURE	CRC		047-62661	rs4.32@frsc.gov.ng
60.	RS5HQ BENIN	FRSC, RS5HQ, BENIN FED. SEC, AUCHI RD, P.O. BOX 3549	B DARWANG	CC			rs5@frsc.gov.ng
61.	RS5.1 EDO STATE SECTOR COMMAND	FRSC, RS5.1, IKPOBIA HILL LAYOUT, OFF AUCHI RD, P.O. BOX 3549, BENIN CITY.	BB DARWANG	CC	08034097655	052-259011	rs5.1@frsc.gov.ng
62.	RS5.2 DELTA STATE SECTOR COMMAND	FRSC, RS5.2, KM4 ASABA-BENIN ROAD PO BOX 905 ASABA	S MAKU	CC	08032312302 08053326503	056-280516	rs5.2@frsc.gov.ng
63.	RS5.3 ANAMBRA SECTOR COMMAND	FRSC, RS5.3, NO.98 ENUGU ALTDI ROAD, PMB 5080, AWKA ANAMBRA STATE	MI GARBA	CC	08032854187 08055269937 08022415438	048-552445	rs5.3@frsc.gov.ng
64.	RS5.11 AUCHI UNIT COMMAND	FRSC, RS5.11, OKENE RD, (ANGLE 90) P.O. BOX 130, AUCHI EDO	G. UDEGHA	CRC	08033649757		rs5.11@frsc.gov.ng

S/N	COMMAND	ADDRESS	COMMANDING OFFICER	RANK	TELEPHONE NUMBER(S)	OFFICE TELEPHONE	E-MAIL ADDRESS
65.	RS5.12 OKADA UNIT COMMAND	FRSC, RS5.12, OVIA NORTH, EDO STATE	CP UZOR	CRC	08059044447		rs5.12@frsc.gov.ng
66.	RS5.13 IRUEKPEN UNIT COMMAND		TK ODIRA	CRC			rs5.13@frsc.gov.ng
67.	RS5.14 OKPELLA UNIT COMMAND		FO ALEGBE	ACC			rs5.14@frsc.gov.ng
68.	RS5.15 OLUKO UNIT COMMAND		OBI PAULINUS				rs5.15@frsc.gov.ng
69.	RS5.21 WARRI SECTOR COMMAND	FRSC, RS5.21 PERMANENT CAMP, DELTA STEEL COMPANY WARRI.	BN EKENNA	ACC	08036703437	053-255852	rs5.21@frsc.gov.ng
70.	RS5.22 AGBOR UNIT COMMAND	FRSC, RS5.22 ALI HAMI RD, OFF OLD LAGOS ASABA RD, AGBOR	AO OGBODO	CRC	08033619003	056-26772 08037242002	rs5.22@frsc.gov.ng
71.	RS5.23 ISELE-UKU UNIT COMMAND		CO COKER	CRC			rs5.23@frsc.gov.ng
72.	RS5.24 PATANI UNIT COMMAND						rs5.24@frsc.gov.ng
73.	RS5.31 ONITSHA UNIT COMMAND	FRSC, RS5.31, KMU ONITSHA/OWERRI RD, AMAZU AREA, PO BOX 8451, ONITSHA.	MR YERIMA	ACC	08023827560		rs5.31@frsc.gov.ng
74.	RS5.32 NNEWI UNIT COMMAND						rs5.32@frsc.gov.ng
75.	RS6HQ PORTHACOURT	FRSC, RS6HQ, 39, ABA ROAD PORTHACOURT	BA KWAGA	ACM		087-237446	rs6@frsc.gov.ng
76.	RS6.1 RIVERS STATE SECTOR COMMAND	FRSC, RS6.1, 39 PMB 5203, PORTHACOURT	SO OKE	CC	08055028751 08033850287	084-232740	rs6.1@frsc.gov.ng
77.	RS6.2 CROSS-RIVER SECTOR COMMAND	FRSC, RS6.2, 71 MARIAM RD PMB 1375, CALABAR	MU CHUKWU	DCC	08035874444	087-236447	rs6.2@frsc.gov.ng
78.	RS6.3 AKWA-IBOM SECTOR COMMAND	FRSC, RS6.3, 7C BEN UDO STREET, OFF NWAMBANDA RD, UYO.	PO OSADEBAMWEN	DCC	08051819342	085-203671	rs6.3@frsc.gov.ng
79.	RS6.4 BAYELSA STATE SECTOR COMMAND	FRSC, RS6.4, PMB 7, YENEGOA.	JB MEHEUX	DCC	08033536938	089-490037	rs6.4@frsc.gov.ng
80.	RS6.11 ELEWE UNIT COMMAND	FRSC, RS6.11, ELEWE, RIVERS STATE	B KAZEEM	ACC	08023139535 08035365321		rs6.11@frsc.gov.ng
81.	RS6.12 AHODA UNIT COMMAND		AK OKORIE	ACC	08037182967		rs6.12@frsc.gov.ng
82.	RS6.21 OGOJA UNIT COMMAND	FRSC, RS6.11, STADIUM RD, IGOLI, OGOJA, CROSS RIVER	YS ADIKWU	CRC	08069110171		rs6.21@frsc.gov.ng
83.	RS6.22 IKOM UNIT COMMAND		PI NWANKWO	ACC			Rs6.22@frsc.gov.ng
84.	RS6.31 EKET UNIT COMMAND	FRSC, RS6.31 OFF EKET CRON RD, PMB 1022, EKET.	I IBRAHIM	CRC	08027210296 08065672124	086-701442	rs6.31@frsc.gov.ng

S/N	COMMAND	ADDRESS	COMMANDING OFFICER	RANK	TELEPHONE NUMBER(S)	OFFICE TELEPHONE	E-MAIL ADDRESS
85.	RS6.32 IKOT EKPENE UNIT COMMAND	FRSC, RS6.32, L/G ANNEX, ABAK ROAD, IKOT-EKPENE	UB ESHIET	CRC	08036768589 08023087706		rs6.32@frsc.gov.ng
86.	RS6.41 SAGBAMA UNIT COMMAND	FRSC, RS6.41 OLD SAGBAMA SEC, SAGBANA	JC AMAYIGHA	ACC	08064263427 08058554582		rs6.41@frsc.gov.ng
87.	RS7HQ ABUJA	FRSC, RS7HQ, GWAGWALADA.	DANJUMA GARBA	CC		09-8820309	rs@frsc.gov.ng
88.	RS7.1 FCT SECTOR COMMAND	FRSC, RS7.1 OPP EDO LINE, UTAKO DISTRICT, ABUJA	J AGWU	DCC	08033026491 08053166400	00-5231933	rs7.1@frsc.gov.ng
89.	RS7.2 NIGER STATE SECTOR COMMAND	FRSC, RS7.2, 3 PAIKO RD PMB MINNA.	N AMBO	DCC	08023622220 08044118000 08055838850	066-221856	rs7.2@frsc.gov.ng
90.	RS7.11GWAGWALADA UNIT COMMAND	FRSC, RS7.11, PO BOX 153, GWAGWALADA ABUJA	B ANAFA	ACC	08023130417 08045084384	09-8821763	rs7.11@frsc.gov.ng
91.	RS7.12 ABAJI UNIT COMMAND	FRSC, RS7.12 FORMER NRC OFFICE, ALONG LOKOJA RD ABAJI FCT, ABUJA	EO ADEBISI	CRC	08033344460		rs7.12@frsc.gov.ng
92.	RS7.13 NYANYA UNIT COMMAND	FRSC, RS7.13, BUILDING MATERIALS ALONG KEFFI RD NYANYA	JI YAUSHAKU	ACC	08034502115	09-6702736	rs7.13@frsc.gov.ng
93.	RS7.14 FED. SEC. UNIT COMMAND	FRSC, RS7.14, ROOM 38, 2.30 2 ND FLOOR, FED SECRETARIAT COMPLEX ABUJA	SE OGHENEKARO	ACC	08053471057	09-5239492	rs7.14@frsc.gov.ng
94.	RS7.15 KUBWA UNIT COMMAND	FRSC, RS7.15, PLOT 62 BYAZIN WATER BOARD JUNC, OFF NYSC CAMP, KUBWA	A MUAZU	CRC	08023339977 08034502111 08055121155	096717582	rs7.15@frsc.gov.ng
95.	RS7.16 NATIONAL ASSEMBLY UNIT	NATIONAL ASSEMBLY, ABUJA	AU OKUONGAE	SRC			rs7.16@frsc.gov.ng
96.	RS7.21 MOKWA UNIT COMMAND	FRSC, RS7.21, KANJI JUNCTION, PMB106, MOKWA.	MK ABUBAKAR	CRC		08032488469	rs7.21@frsc.gov.ng
97.	RS7.22 SULEJA UNIT COMMAND	FRSC, RS7.22, 58 CHURCH, PO, BOX1224, SULEJA.	UP WIHIOKA	ACC	08034502113 08044109245 08056022572	09-8500347 09-8502447	rs7.22@frsc.gov.ng
98.	RS7.23 KONTAGORA UNIT COMMAND	FRSC, RS7.23, LAGOS KADUNA RD, PMB 22 KONTAGORA, NIGER	II FAKAI	ACC	08036513137 08026364007	067-20839	rs7.23@frsc.gov.ng
99.	RA7.24 BIDA UNIT COMMAND	FRSC, RS7.24 BIDA, NIGER STATE	I AKPOROWHO	ACC	08035169573	066-20839	rs7.24@frsc.gov.ng
100.	RS7.25 NEW BUSSA UNIT COMMAND		AJ UMAR	ACC			rs7.25@frsc.gov.ng
101.	RS7.26 SABON WUSE UNIT COMMAND		ADAMU JOSEPH	CRC			rs7.26@frsc.gov.ng

S/N	COMMAND	ADDRESS	COMMANDING OFFICER	RANK	TELEPHONE NUMBER(S)	OFFICE TELEPHONE	E-MAIL ADDRESS
102.	RS8HQ ILORIN	FRSC, RS8HQ, OTTA RD, GRA, PMB 1589 ILORIN, KWARA	O FADOGBA	CC	08033069071	031-229547	rs8@frsc.gov.ng
103.	RS8.1 KWARA STATE SECTOR COMMAND	FRSC, RS8.1 MORO L/6 SEC, ILORIN-JEBBA RD, BODE SAADU, KWARA.	KAB LAVAL	DCC		031-222335	rs8.1@frsc.gov.ng
104.	RS8.2 EKITI STATE SECTOR COMMAND	FRSC, RS8.2 AJALOSUN STREET, AKURE RD PMB 5312 ADO-EKITI,	AC NWACHUKWU	DCC		030-250970	rs8.2@frsc.gov.ng
105.	RS8.3 KOGI STATE SECTOR COMMAND	FRSC, RS.3, LOKOUGOMA PHASE I LOKOJA, KOGI STATE	YK OLAGUNJU	CC		058-221297	rs8.2@frsc.gov.ng
106.	RS8.11 BODE SAADU UNIT COMMAND	FRSC, RS8.11 MORO L/6 SEC, ILORIN JEBBA RD BODE SAADU, KWARA	FM AFOKE	CRC	08034937953		rs8.11@frsc.gov.ng
107.	RS8.12 OMLU-ARAN UNIT COMMAND		A OKO	ACC			rs8.12@frsc.gov.ng
108.	RS8.13 JEBBA UNIT COMMAND						rs8.13@frsc.gov.ng
109.	RS8.14 OFFA UNIT COMMAND						rs8.14@frsc.gov.ng
110.	RS8.15 OLURU UNIT COMMAND		RA ADEWUMI	ACC			rs8.15@frsc.gov.ng
111.	RS8.21 IDO EKITI UNIT COMMAND	FRSC, RS8.21, ADJ, OBA'S PALACE, IDO-EKITI, EKITI STATE	AI AWE	CRC			rs8.21@frsc.gov.ng
112.	RS8.31 ANKPA UNIT COMMAND	FRSC, RS8.31 AYANGBA RD, ANKPA, KOGI STATE	DA ADEJU	ACC	08059452015	04488072	rs8.31@frsc.gov.ng
113.	RS8.32 KABBA UNIT COMMAND	FRSC, RS8.32 KABBA/LOKOJA RD KOGI STATE	A OBAFEMI	ACC		058-300041	rs8.32@frsc.gov.ng
114.	RS9HQ ENUGU	FRSC, RS9HQ ENUGU STATE	AA OMEDIJI	ACM	08033119133	042-258644	rs9@frsc.gov.ng
115.	RS9.1 ENUGU STATE SECTOR COMMAND	FRSC, RS9.1 BRIDGEWAY RD GRA, PMB 1523, ENUGU	LU IKPI	DCC	08036322813 08042154398	042-258011	rs9.1@frsc.gov.ng
116.	RS9.2 EBONYI STATE SECTOR COMMAND	FRSC, RS9.2, PO BOX 126, ABAKALIKI.	KA ADELEYE	CC	08037197291 08052738932	043-300713	rs9.2@frsc.gov.ng
117.	RS9.31 ABIA STATE SECTOR COMMAND	FRSC, RS 9.31, 57 ASABA STREET, BEHIND GEN SANI ABACHA RECREATION PARK, PMB 275, UMUHAIYA.	S AKINYEMI	DCC		088-221941	rs9.31@frsc.gov.ng
118.	RS9.4 IMO STATE SECTOR COMMAND	FRSC, RS9.4, P.M.B. 1595, OWERRI, IMO.	NA ZAKARI	CC	08035902090 08055242623	083-231927	rs9.4@frsc.gov.ng

S/N	COMMAND	ADDRESS	COMMANDING OFFICER	RANK	TELEPHONE NUMBER(S)	OFFICE TELEPHONE	E-MAIL ADDRESS
119.	RS9.11 NSUKKA UNIT COMMAND	FRSC, RS9.11, NSUKKA, ENUGU	MA JATAU	ACC	08033141172	042-771917	rs9.11@frsc.gov.ng
120.	RS9.12, 9 TH MILE UNIT COMMAND	FRSC, RS9.12, 9 TH MILE, ENUGU STATE	AG JEGEDE	ACC	08050522212 08023503291		rs9.12@frsc.gov.ng
121.	RS.21 AFIKPO UNIT COMMAND	FRSC, RS9.21, AFIKPO, ENUGU	D BELLO	ACC	08036013731 08050354578		rs9.21@frsc.gov.ng
122.	RS9.22 ISHIAGU UNIT COMMAND		PMC NJOKU	CRC			Rs9.22@frsc.gov.ng
123.	RS.9.31 ABA UNIT COMMAND	FRSC, RS9.31 ENUGU P/HACOURT EXPRESS WAY, PMB7252, ABA	IO MARTINS	ACC	08034743657 08050354578		rs9.31@frsc.gov.ng
124.	RS9.32 KM 78 ABA UNIT COMMAND		ON ASOMBER	ACC			rs9.32@frsc.gov.ng
125.	RS9.41 ORLU UNIT COMMAND	FRSC, RS9.41, ORLU, IMO STATE.	C ANABOR	ACC	08033819591 08052147156		rs9.41@frsc.gov.ng
126.	RS9.42 OKIGWE UNIT COMMAND	FRSC, RS9.42 UMUHAIYA/ENUGU EXPR WAY OKIGWE	AA NSEOBOT	CRC	08034055222 08058471850	088-420866	rs9.42@frsc.gov.ng
127.	RS9.43 NJABA UNIT COMMAND		H BENAMAISSA	CRC			rs9.43@frsc.gov.ng
128.	RS9.44 NGOR OKPALA UNIT COMMAND		FO UGWU	AC			rs9.44@frsc.gov.ng
129.	RS9.45 MBAISE UNIT COMMAND						rs9.45@frsc.gov.ng
130.	RS10HQ SOKOTO	FRSC, RS10HQ FED. SEC COMPLEX, 3 KADUNA RD PMB 2178, SOKOTO	O OBAYEMI	CC		060235639	rs10@frsc.gov.ng
131.	RS10.1 SOKOTO STATE SECTO COMMAND	FRSC, RS10.1 ALI AKILU RD OFF SANI ABACHA WAY PMB 2178, SOKOTO	CO ADEMOLITI	CC	08035069107	060236800	rs10.1@frsc.gov.ng
132.	RS10.2 KEBBI STATE SECTOR COMMAND	FRSC, RS10.2 LODGE I, SOKOTO D/ISA	MB WIDA	DCC	08034108856	068321275	rs102@frsc.gov.ng
133.	RS10.3 ZAMFARA STATE SECTOR COMMAND	FRSC, RS10.3 SOKOTO RD PMB 347, GUSAU.	UMAR LIMAN	DCC	08044107483 08027940032 08051652664	063203598	rs10.2@frsc.gov.ng
134.	RS10.11 ISA UNIT COMMAND	FRSC, RS.10.11, LODGE I, SOKOTO RD ISA, SOKOTO STATE.	AG SANJISI	CRC	08043310714 08024249459 08059675298	063-38154	rs10.11@frsc.gov.ng
135.	RS10.21 ZURU UNIT COMMAND	FRSC, RSQ10.21, PMB 222, ZURU, KEBBI.	AI IBRAHIM	ACC	08022406082	067-650377	rs10.21@frsc.gov.ng
136.	RS10:31 TALATA SOKOTO UNIT COMMAND	FRSC, RS10.31 SOKOTO RD, TALATA MAFARA, ZAMFARA.	MS ALIYU	CRC	08036892033	063-75583	rs10.31@frsc.gov.ng
137.	RS10.32 K/NAMODA UNIT COMMAND		PS UDO-ABASI	CRC			rs10.32@frsc.gov.ng
138.	RS11HQ OSOGBO	FRSC, RS11HQ, 100 OLD IKIRUN RD, PO BOX 269, OSOGBO,	GO OLANIRAN				rs11@frsc.gov.ng

S/N	COMMAND	ADDRESS	COMMANDING OFFICER	RANK	TELEPHONE NUMBER(S)	OFFICE TELEPHONE	E-MAIL ADDRESS
139.	RS.11.1 OSUN STATE SECTOR COMMAND	FRSC, RS11.1, KM4 GBONGAN RD, PMB 4353, OSHOGBO.	BH HALILU	DCC	08037088823 08051313252		rs11.1@frsc.gov.ng
140.	RS.11.2 ONDO STATE SECTOR COMMAND	FRSC, RS11.2, AKURE ISEHA HIGHWAY, PO BOX 3219, AKURE.	AK HASSAN	CC	08035798904 08045114823 08054326566 07030076889		rs11.2@frsc.gov.ng
141.	RS11.3 OYO STATE SECTOR COMMAND	FRSC, RS 11.3, OYO RD MONIYA, PO BOX 20345, IBADAN	GA CHUKWU	CC	08037454407 08055933422		rs11.3@frsc.gov.ng
142.	RS.11.11 IFE UNIT COMMAND	FRSC, RS11.11, KM10 IFE, OSUN STATE	JA OWOADE	ACC	08053000308 08055933422		rs11.11@frsc.gov.ng
143.	RS11.12 ILESHA UNIT COMMAND		OS GIWA	CRC	08034273865		rs11.12@frsc.gov.ng
144.	RS11.21 ORE UNIT COMMAND	RS11.21, OLD MARKET BYE PASS, PO BOX 100, ORE ONDO STATE	IM AUDU	CRC	08036013811		rs11.21@frsc.gov.ng
145.	RS11.22 OWO UNIT COMMAND	FRSC, MOW&T OFFICE COMPLEX TYBRE RD, OWO	MA ADETUNJI	ACC	0803341445		rs11.22@frsc.gov.ng
146.	RS11.23 IKARE UNIT COMMAND		JO FEHINTOLA	ACC	08053620694		rs11.23@frsc.gov.ng
147.	RS11.31 OGBOMOSHO UNIT COMMAND	FRSC, RS11.31, ARIN KINKIN, OYO RD POBOX 1251 OGBOMOSHO	PAUL GUAR	CRC		038720824	rs11.31@frsc.gov.ng
148.	RS11.32 OLUYOLE UNIT COMMAND	FRSC, RS 11.32, KM10, IBADAN LAGOS DUAL CARRIAGE	MO OLAPADE	ACC		02-2317651	rs11.32@frsc.gov.ng
149.	RS11.33 APATA UNIT COMMAND	IBADAN END, TOLL STATE, PO BOX 38721, IBADAN.	OA ODEKUNLE	CRC	08060145196		rs11.33@frsc.gov.ng
150.	RS11.34 MOKOLA UNIT COMMAND	FRSC, IDDO LG, SEC., IDDO	A ADELATA	CRC	08055268455		rs11.34@frsc.gov.ng
151.	RS11.35 EGBEDA UNIT COMMAND	FRSC, RS11.35, IBADAN-IFE TOLL GATE EGBEDA	JO ADEKANVE	ACC	08033428944		rs11.35@frsc.gov.ng
152.	RS11.36 SHAKI UNIT COMMAND	FRSC, RS11.36, SHAKI-WEST LG COUNCIL, SHAKI	AA ADEDOYIN	CRC	08033857326		rs11.36@frsc.gov.ng
153.	RS11.37 KISTI UNIT COMMAND		OS ASA	ACC	08052166933		rs11.37@frsc.gov.ng
154.	RS11.38 OLD OYO UNIT COMMAND						rs11.38@frsc.gov.ng
155.	RS12HQ BAUCHI	FRSC, RS 12HQ, DAMBO RD, FORMER SDP SEC., PMB 1139 MAIDUGRI, BORNO STATE	DD HASKE, MFR	ACM	08062652121	077-546533	rs12@frsc.gov.ng

S/N	COMMAND	ADDRESS	COMMANDING OFFICER	RANK	TELEPHONE NUMBER(S)	OFFICE TELEPHONE	E-MAIL ADDRESS
156.	RS12.1 BAUCHI STATE SECTOR COMMAND	FRSC, RS12.1 DAMBO RD, FORMER SDP SEC. PMB 1139, M/DUGRI, BORNO STATE	GO AMATA	CC	08037110517 08045257061	077-543496	rs12.1@frsc.gov.ng
157.	RS12.2 BORNO STATE SECTOR COMMAND	FRSC, RS12.2 DAMBO RD, FORMER SDP SEC. PMB 1139, M/DUGRI, BORNO STATE	CO KALU	DCC	08058707363	076-232069	rs12.2@frsc.gov.ng
158.	RS.12.3 YOBE STATE SECTOR COMMAND	FRSC, RS12.3 PHASE I STATE SEC, MAIDUGRI RD PO BOX 264 DAMATTURU, YOBE STATE	EE EKEKWE	DCC	08060600601 08028478855	074-522772	rs12.3@frsc.gov.ng
159.	RS12.11 AZARE UNIT COMMAND	FRSC, RS 12.11, GADAU RD, PMB 002 AZARE, BAUCHI	SS JIMETA	CRC		071200816	rs12.11@frsc.gov.ng
160.	RS12.12 KARI UNIT COMMAND						rs12.12@frsc.gov.ng
161.	RS12.13 ALKALERI UNIT COMMAND		AD BUBA	ACC			rs12.13@frsc.gov.ng
162.	RS12.14 TORO UNIT COMMAND						rs12.14@frsc.gov.ng
163.	RS12.21 BIU UNIT COMMAND	FRSC, RS,12.21 GOMBERD, PMB 1566 BIU, BORNO STATE	AB SULE	ACC	08036059991	076-850366	rs12.21@frsc.gov.ng
164.	RS12.22 DIKWA UNIT COMMAND	FRSC, RS12.22 GAMSORU RD, DIKWA BORNO STATE	S MORMONI	CRC	08029823354 08036324867		rs12.22@frsc.gov.ng
165.	RS12.31 POTISKUM UNIT COMMAND	FRSC, RS12.31, OLD WORKS DEPT. MOLID IDRIS WAY, POTISKUM, YOBE.	VC OSUJOR	CRC	08036191402	076-420714	rs12.31@frsc.gov.ng
166.	RS12.32 DOGONKUKA UNIT COMMAND		EY EMMANUEL	ACC	08036309743		rs12.32@frsc.gov.ng
167.	O/C VILLA MARSHAL	PRESIDENTIAL VILLA	IE MOMOH	RC	08055057280 08028407308		

LEGEND

SMD	SPECIAL MARSHAL DEPARTMENT
CC	CORPS COMMANDER
DCC	DEPUTY CORPS COMMANDER
ACC	ASSISTANT CORPS COMMANDER
CRC	CHIEF ROUTE COMMANDER
RC	ROUTE COMMANDER
CMD	COMMANDER
RS	ROAD SAFETY
SM	SPECIAL MARSHAL

SPECIAL MARSHALS DEPARTMENT
SPECIAL MARSHAL STRENGTH, ZONAL AND SECTOR COORDINATORS

ZONE	ZONAL HQ	STATE HQ	SM NO.	CODE	STATE COORD	ZONAL COORD
RS 1	KADUNA 1081	KADUNA	450	RS 1.1	NICHOLAS ADOSSODIS 08037042720	F.O ESHIEBOR 08036015524 08023094901 06435579
		KANO	345	RS 1.2	M.B. ABUBAKAR 08037021330	
		KASTINA	140	RS 1.3	S.ADELAKUN	
		JIGAWA	146	RS 1.4	SHEHU MOHAMMED 064-721205	
RS 2	LAGOS 1439	LAGOS	965	RS 2.1	TOYIN KADIKU 08037169133	FAB ADENEKAN 01-4528312
		OGUN	474	RS 2.2	KAYODE FATOKUN 08037256427	08033004952 08045228869
RS 3	YOLA 315	ADAMAWA	105	RS 3.1	A. BANKOLE 08036073457	COM. JIBRIN SAIDU 0802737344
		TARABA	125	RS 3.2	A. KOBIBA 08036213352	
		GOMBE	85	RS 3.3	UCHENNA E. OHA 08034953855	
RS 4	JOS 613	PLATEAU	262	RS 4.1	S. OLORUNDARE 08037277791	DANLADI JIMOH 08035889655
		NASARAWA	137	RS 4.2	M.O. IDRIS 08035866260	
		BENUE	214	RS 4.3	Y.T.YAJI 08045117634	
RS 5	BENIN	EDO	319	RS 5.1	N.A OTUNBA 0803576690	AEO SHALOPE 0803799422
		DELTA	391	RS 5.2	M.C. AGBAMU 08034042828	
		ANAMBRA	252	RS 5.3	FELIX NWOKO 08037717838	
RS 6	PORT HARCOURT	RIVERS	185	RS 6.1	OZEMOYON IREDIA 08023339480	F.A. EKPE 08037028234 087-233169
		CROSS RIVERS	220	RS 6.2	E.N. CHIKE 08037182599	
		AKWA IBOM	189	RS 6.3	TONY UMOH 08036746382	
		BAYELSA		RS 6.4	PAUL OBUMA 080	
RS 7	ABUJA 697	FCT	427	RS 7.1	ALEX O. OSITA 08055509201	M.IGBO 031-670004 08036016262
		NIGER	270	RS 7.2	J.A. OJEBODE 08033734443	

ZONE	ZONAL HQ	STATE HQ	SM NO.	.CODE	STATE COORD	ZONAL COORD
RS 8	ILORIN 1003	KWARA	474	RS 8.1	J. OMOTOSHO 08033576718	FRANK OJIAKO 08033586134
		EKITI	300	RS 8.2		031-220698
		KOGI	229	RS 8.3	JOEL A. MOSES 08035920212	
RS 9	ENUGU 929	ENUGU	275	RS 9.1	M.E. ELIAS 08033602756	TONY MUONEKE 08037861053
		EBOYIN	153	RS 9.2	M. UNEGBO 08037518088	08045175008 043-221618
		IMO	230	RS 9.3	TONY KALU 08035089933	
		ABIA	271	RS 9.4	D. OKAFOR 08037109017	
RS 10	SOKOTO 334	SOKOTO	128	RS 10.1	SHUAIBU USMAN 08035675946	
		KEBBI	110	RS 10.2	KASIM MARA 08036050565	
		ZAMFARA	106	RS 10.3	KABIRU MOH'D 08043177217	
RS 11	OSOGBO 1357	OSUN	475	RS 11.1	T.A. AJIBOLA 08033745590 08052272029	E.OKEBUKOLA 08034028415
		OYO	632	RS 11.2	MUYIWA ADEDEJI 08023460911 08038240071	
		ONDO	250	RS 11.3	G.S.ADETILOYE 08033713163	
RS 12	BAUCHI 336	BAUCHI	71	RS 12.1	MUSTAPHA KOLO 08023586384	C.NWANGWUNG 08034390057
		BORNO	140	RS 12.2	J.B. HASSAN 08023342885 077-543308	074-522422 EXT 119
		YOBE	125	RS 12.3	MOH'D JOURO 08034942259 074-521020	

SMD NATIONAL EXECUTIVE COUNCIL 2007

ACM(SMD): DICK PERRE(ACM) 08036006246 ,

NATIONAL COORDINATOR: E OTIABA (VERY REV.FR) 08037032538, 08056027987, 08046100670.

DEPUTY NATIONAL COORDINATOR: MICHAEL FAFUNSHO(Prof.) 08023451723

NATIONAL SECRETARY: ARABAS RUKUJEI (ARC.) 08023625914, 08036047881, 08036059089

ASSISTANT NATIONAL SECRETARY: JIMMY B AMUSU(PASTOR) 08033260046, 08056256645, 01-4807224

NATIONAL TREASURER: LABARAN MAINA (HON.) 08045065270, 047-220098

HOS (SMD): BA SANI (CC) 08058234985

HOS (RSC): MI IYAM (ACC) 080

ROAD TRAFFIC ACCIDENT SUMMARY (2005)

STATE	TOTAL CASES	FATAL	SERIOUS	MINOR	PERSONS KILLED	PERSONS INJURED	TOTAL CASUALTY
Abia	92	21	45	26	37	348	385
Adamawa	110	24	42	44	21	227	248
Akwa Ibom	287	44	197	46	98	581	679
Anambra	159	38	83	38	102	218	320
Bayelsa	109	14	71	24	15	198	213
Bauchi	120	23	57	40	54	153	207
Benue	208	71	106	31	162	669	831
Borno	112	49	48	15	92	277	369
Cross River	143	50	64	29	88	188	276
Delta	122	31	44	47	83	268	351
Ebonyi	48	12	28	8	25	143	168
Edo	121	39	55	27	95	254	349
Ekiti	95	25	55	15	48	201	249
Enugu	114	36	57	21	145	397	542
FCT	496	106	224	166	236	1096	1332
Gombe	81	23	27	31	43	418	461
Imo	115	39	38	38	70	320	390
Jigawa	70	43	12	15	56	275	331
Kaduna	345	87	110	148	121	527	648
Kano	87	37	42	8	140	336	476
Kastina	147	76	53	18	153	396	549
Kebbi	123	33	72	18	59	196	255
Kwara	116	18	61	37	46	174	220
Kogi	139	64	47	28	264	367	631
Lagos	2475	453	1048	974	666	2278	2944
Nasarawa	173	68	93	12	159	716	875
Niger	234	53	140	41	116	551	667
Ondo	130	45	61	24	120	374	494
Ogun	1326	387	616	323	553	1442	1995
Oyo	202	72	37	93	229	504	733
Osun	198	60	63	75	108	475	583
Plateau	168	32	103	33	79	319	398
Rivers	86	28	28	30	38	100	138
Sokoto	69	15	44	10	26	166	192
Taraba	76	17	37	22	33	133	166
Yobe	180	43	90	47	78	330	408
Zamfara	86	23	45	18	61	164	225
TOTAL	8962	2299	4043	2620	4519	15779	20298

ROAD TRAFFIC ACCIDENT SUMMARY (2006)

STATE	TOTAL CASES	FATAL	SERIOUS	MINOR	PERSONS KILLED	PERSONS INJURED	TOTAL CASUALTY
Abia	91	9	70	12	16	251	267
Adamawa	243	83	141	19	98	344	442
A/ Ibom	125	36	72	17	100	193	293
Anambra	40	16	20	4	41	171	212
Bayelsa	80	20	37	23	41	96	137
Bauchi	131	46	73	12	136	410	546
Benue	91	33	55	3	62	388	450
Borno	138	29	107	2	55	222	277
C/ River	185	69	108	8	113	210	323
Delta	76	25	38	13	90	291	381
Ebonyi	53	6	42	5	6	92	98
Edo	214	67	115	32	190	540	730
Ekiti	73	32	40	1	74	193	267
Enugu	77	20	52	5	29	253	282
F.C.T	353	108	213	32	332	1171	1503
Gombe	103	23	79	1	66	358	424
Imo	225	78	122	25	187	364	551
Jigawa	229	66	113	50	81	152	233
Kaduna	205	60	131	14	117	471	588
Kano	213	68	124	21	82	348	430
Kastina	375	164	185	26	311	604	915
Kebbi	89	14	52	23	22	224	246
Kwara	195	77	111	7	107	387	494
Kogi	230	94	125	11	221	562	783
Lagos	2806	547	1944	315	645	3169	3814
Nasarawa	107	31	73	3	112	391	503
Niger	146	56	63	27	135	410	545
Ondo	168	54	95	19	145	540	685
Ogun	1102	401	599	102	722	1681	2403
Oyo	145	69	76	0	140	389	529
Osun	163	47	101	15	129	636	765
Plateau	192	34	128	30	62	410	472
Rivers	63	11	35	17	30	123	153
Sokoto	71	15	37	19	50	299	349
Taraba	136	23	68	45	28	278	306
Yobe	81	30	48	3	82	343	425
Zamfara	100	39	58	3	87	426	513
Total	9114	2600	5550	964	4944	17390	22334